

TURNING CONCEPTS

Solutions to the Metal Working Industry



Collets

Single Spindle
Multi-Spindle
Bar Loader

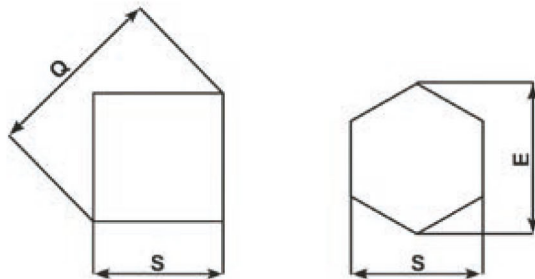
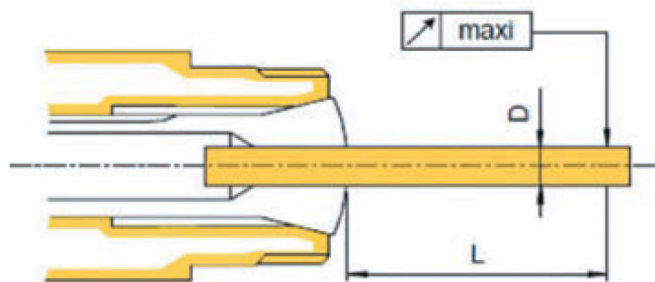
catalog

**Collets Catalog
2018-2019**

Call us today **(704) 849-9209**
or visit us online @ **turningconcepts.com**



Ø d	L	Standard max limit
from 0.5 to 1	3	0.015
from 1 to 1.6	6	0.02
from 1.6 to 3	10	0.02
from 3 to 6	16	0.02
from 6 to 10	25	0.02
from 10 to 18	40	0.03
from 18 to 24	50	0.03
from 24 to 30	60	0.03
from 30 to 50	80	0.04
from 50	100	0.04



S	Q	E
3	4.2	3.5
4	5.7	4.6
5	7.1	5.8
6	8.5	6.9
7	9.9	8.1
8	11.3	9.2
9	12.7	10.4
10	14.1	11.5
11	15.6	12.7
12	17	13.8
13	18.4	15
14	19.8	16.2
15	21.2	17.3

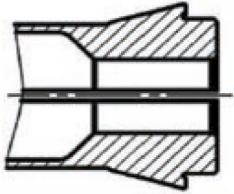
S	Q	E
16	22.6	18.5
17	24	19.6
18	25.4	20.8
19	26.9	21.9
20	28.3	23.1
21	29.7	24.3
22	31.1	25.4
23	32.5	26.6
24	33.9	27.7
25	35.4	28.9
26	36.8	30.1
27	38.2	31.2
28	39.6	32.4

S	Q	E
29	41	33.5
30	42.4	34.6
31	43.8	35.8
32	45.3	36.9
33	46.7	38.1
34	48.1	39.3
35	49.5	40.4
36	50.9	41.6
37	52.3	42.7
38	53.7	43.9
39	55.2	45
40	56.6	46.2
41	58	47.6

S	Q	E
42	59.4	48.5
43	60.8	49.7
44	62.2	50.8
45	63.6	52
46	65.1	53.1
47	66.5	54.4
48	67.9	55.5
49	69.3	56.6
50	70.7	57.7
51	72.1	59
52	73.5	60.1
53	75	61.2
54	76.4	62.4

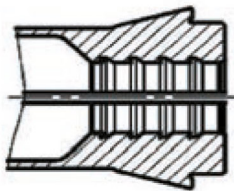
S	Q	E
55	77.8	63.5
56	79.2	64.7
57	80.6	65.1
58	82	67
59	83.4	68.2
60	84.4	69.3
61	86.2	70.5
62	87.6	71.6
63	89	72.8
64	90.5	74
65	90.5	74

BORING FORMS



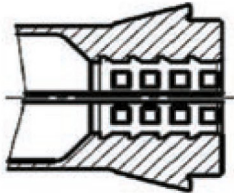
SMOOTH BORE

Smooth shape bore.



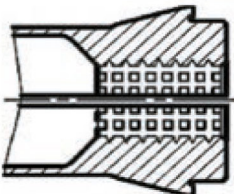
RIFLED BORE

Rifled bore with circular grooves.



KNURLED BORE

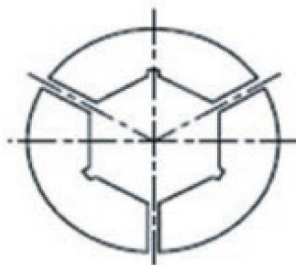
Knurled bore with circular and vertical grooves.



DENSE PYRAMID TOOTHING

Hole pyramid with circular and vertical grooves.

STANDARD COLLET FORMS



SPECIAL FORM COLLETS ARE AVAILABLE ON REQUEST

SINGLE-SPINDLE COLLETS
MULTI-SPINDLE COLLETS
BARLOADER COLLETS



SINGLE-SPINDLE COLLETS



Dead Length Collets

Dead length collets with single or double cone

Collet Chucks

Collet chucks for Hainbuch spindles

Carbide Guide Bushings for Sliding Headstock

Adjustable widia guide bushings for sliding headstock lathes: Citizen, Gildemeister, Star

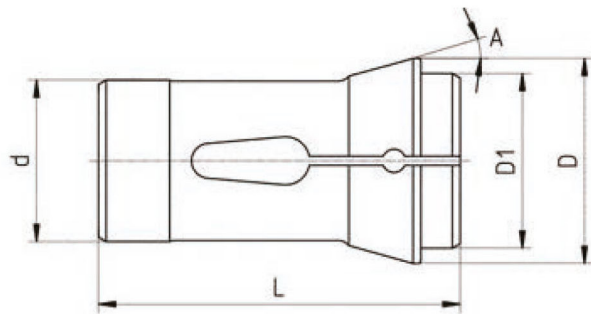
ER Range Collets

ER range toolholder collets

Feed Fingers

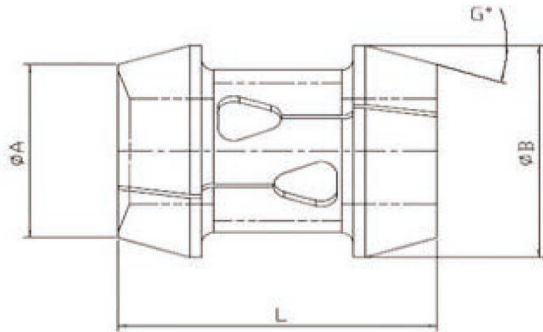
Feed fingers for manual bar feed for Index lathes





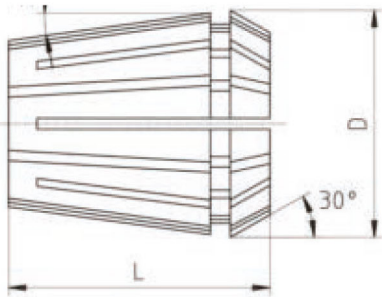
DEAD LENGTH COLLETS - SINGLE CONE

Code	Description	d	D	L	a	Diameter max	Hex max
101 E	F8	8.0	12.0	42.0	16°	6.0	-
116 E	F13	13.0	19.0	64.0	16°	10.0	8.0
120 E	F15	15.0	21.0	64.0	16°	12.0	10.0
1212 E	F16	16.0	21.0	64.0	16°	13.0	11.0
136 E	F20-201	20.0	26.0	54.0	15°	16.0	12.0
138 E	F20-87	20.0	28.0	67.0	16°	16.0	12.0
140 E	BA15	22.0	30.0	55.0	15°	18.0	15.0
145 E	F25	25.0	35.0	77.0	16°	20.0	17.0
148 E	BA20	28.0	38.0	70.0	15°	23.0	20.0
1446 E	F30-101	30.0	38.0	65.0	15°	25.0	22.0
157 E	F30-63	30.0	42.0	80.0	16°	25.0	22.0
161 E	BA25	32.0	45.0	75.0	15°	26.0	22.0
162 E	IX25	35.0	43.0	70.0	15°	25.0	22.0
163 E	BA30	35.0	48.0	80.0	15°	30.0	26.0
1536 E	F37	37.0	47.0	92.0	16°	32.0	27.0
171 E	BA36	42.0	55.0	94.0	15°	36.0	32.0
173 E	BA42	48.0	60.0	94.0	15°	42.0	36.0
177 E	BA52	58.0	70.0	94.0	15°	52.0	45.0
185 E	BA60	66.0	84.0	110.0	15°	60.0	52.0
BA70	BA70	80.0	98.0	115.0	15°	70.0	60.0
BA80	BA80	95.0	117.0	125.0	15°	80.0	68.0



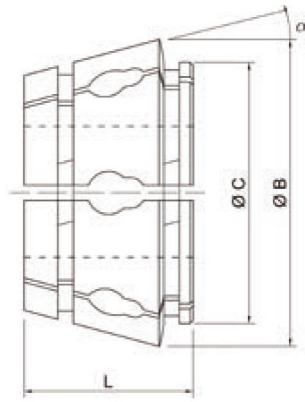
DEAD LENGTH COLLETS - DOUBLE CONE

Code	A	B	L	a	Diameter max	Hex max
BD32	39.0	50.0	70.0	17°	32.0	27.0
BD42	46.0	57.0	80.0	17°	42.0	36.0
BD45	49.0	60.0	80.0	17°	45.0	38.0
BD52	60.0	70.0	80.0	16°	52.0	45.0
BD60	70.0	81.0	90.0	17°	64.0	52.0
BD70	80.0	91.0	100.0	17°	70.0	60.0
BD80	95.0	108.0	105.0	17°	80.0	68.0



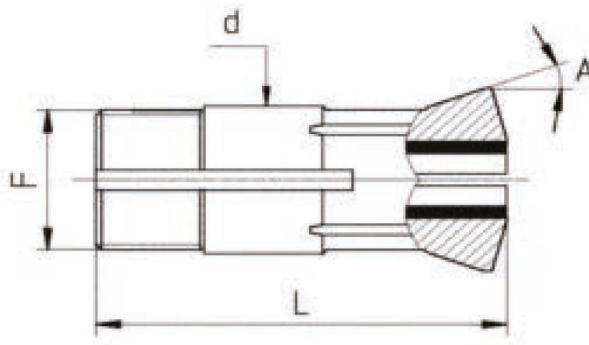
ER RANGE COLLETS

Code	Description	D	L	Diameter max	Hex max
4009E	ER11	11.5	18.0	7.0	-
426E	ER16	17.0	27.0	12.0	-
428E	ER20	21.0	31.0	15.0	-
430E	ER25	26.0	35.0	20.0	-
470E	ER32	33.0	40.0	25.0	-
472E	ER40	41.0	46.0	30.0	-



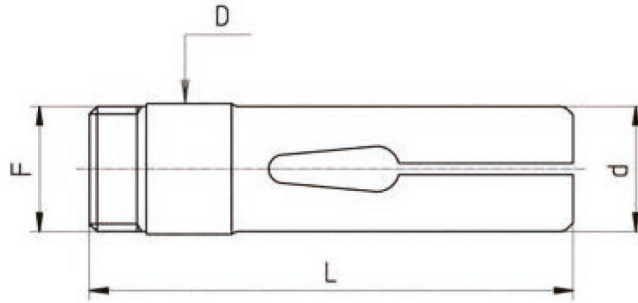
COLLET CHUCKS - HAINBUCH TYPE

Code	D	L	Diameter max	Hex max
SK32BZI	57.8	47.0	32.0	27.0
SK42BZI	79.3	47.0	42.0	36.0
SK52BZI	79.2	46.0	52.0	45.0
SK65BZI	99.65	58.0	65.0	56.0
SK80BZI	114.5	53.0	80.0	68.0



CARBIDE GUIDE BUSHING FOR SLIDING HEADSTOCK

Code	d	L	a	Thread (F)	Diameter max	Hex max
853T	18.0	59.0	30°	16X1	13.0	11.0
1354T	22.0	68.0	16°	19X1	16.0	14.0
39001T	22.0	68.0	16°	22X1	18.0	15.0
605T	24.0	61.0	30°	24x1	18.0	14.0
1357T	28.0	81.0	30°	25x1	21.0	18.0
223T	28.0	82.0	16°	25x1	21.0	18.0
227T	34.0	87.5	10°	34X1	25.0	22.0
229T	42.0	82.0	16°	40X1	32.0	28.0
106T	48.0	81.0	30°	48x1.25	42.0	36.0



FEED FINGERS

Code	Description	d	L	Thread (F)	Diameter max	Hex max
207E	DG12	18.0	70.0	M16X1 Left	12.0	11.0
217E	DG12/16	21.0	70.0	M20X1 Left	16.0	14.0
220E	C19	24.0	85.0	M22X1 Left	18.0	16.0
236E	C29	30.0	95.0	M28X1 Left	24.0	21.0
237E	A25	31.0	90.0	M29X1 Left	25.0	22.0
254E	B42	42.0	116.0	M40X1 Left	36.0	30.0
273E	B60	60.0	140.0	M58X1 Left	52.0	45.0

SPECIAL DRAWING COLLETS



MULTI-SPINDLE COLLETS

Gildemeister Collets

Collets and feed fingers for Gildemeister AS16/20 GS/GM20
GM32/35 GM42 AS48/67 multispindle lathes

Mory-Say Collets

Collets and feed fingers for Mori-Say 6/20 6/25 6-8/32 6-8/42 6/57
6/67 multispindle lathes

Schütte Collets

Collets and feed fingers for Schütte SE16 SE25 SF/AF32 AD40
SF42 SD50 SF51 SF63 SF67 SF81 multispindle lathes

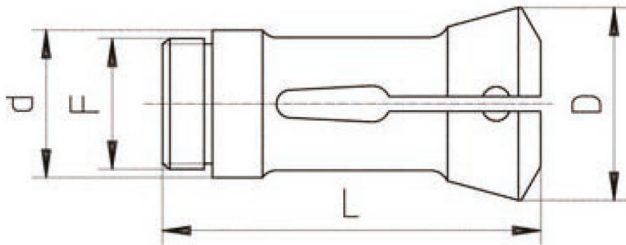
Wickman Collets

Collets and feed fingers for Wickman 5/8" 1" 1"3/8 1"3/4 2"1/4 2"5/8
multispindle lathes

Tornos Collets

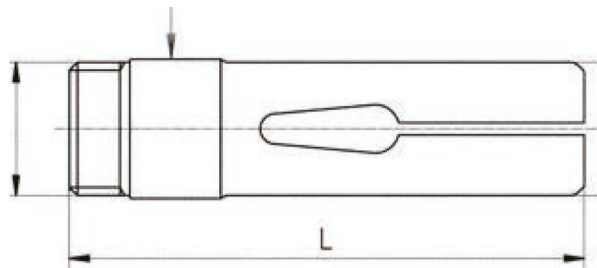
Collets and feed fingers for Tornos AS14 SAS16 BS20 Multi Deco
26/6 20 multispindle lathes





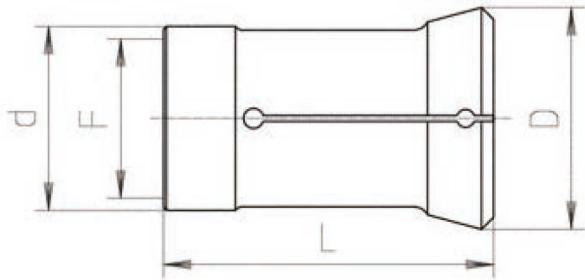
GILDEMEISTER CLAMPING COLLETS

Code	Description	d	D	L	a	Thread (F)	Diameter max	Hex max
9013E	AS12	26.8	34.0	88.0	15°5'	M24X1.0 Left	12.0	10.0
9012E	AS16/20 GS/ GM20	34.0	42.0	90.0	16°	M30X1.0 Left	24.0	19.0
9017E	AS16/20 GS/ GM20 Mod. 25	38.0	45.5	90.0	16°	M34.5X0.75 Left	27.0	24.0
9023E	GM16	30.0	39.0	80.5	15°	AtcB 27.12x1,5 60	16.0	14.0
9045E	AS25	45.0	60.4	164.0	15°	M40X1.0 Left	25.0	22.0
9046E	GS25 Mod. 32	45.0	60.4	164.0	15°	M42X1.0 Left	26.0	22.0
9069E	AS32 GM32/35	53.0	69.4	139.0	15°	M48X1.5 Left	38.0	31.0
9115E	GM42	64.0	80.5	134.0	15°	M59X1.5 Left	45.0	40.0
9132E	AS48	70.0	90.4	167.5	15°	M65X1.5 Left	53.0	45.0
9178E	AS67	90.0	115.4	183.5	15°	M85X1.5 Left	67.0	55.0



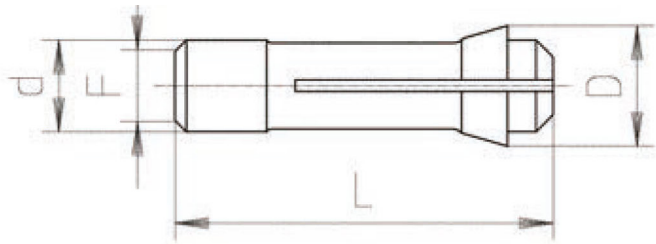
GILDEMEISTER FEED FINGERS

Code	Description	d	D	L	Thread (F)	Diameter max	Hex max
9259E	AS12	17.5	19.5	82.0	M17X1.0	12.0	10.0
9258E	AS16/20 GS/ GM20	25.0	25.0	90.0	M24X1.0	20.0	17.0
9288E	AS16/20 GS/ GM20 Mod. 25	30.0	30.5	90.0	M28.5X0.75	25.0	22.0
9268E	GM16	20.0	22.0	86.0	M20X1.0	16.0	14.0
9287E	AS25	32.5	33.0	140.0	M30X1.0 Left	25.0	21.0
9336E	AS/GM32 Left thread	40.0	41.2	136.0	M38X1.5 Left	32.0	28.0
9335E	GM35 Right thread	41.0	41.2	136.0	M39X1.0	35.0	31.0
9374E	GM42	50.2	51.5	136.0	M48X1.5	42.0	37.0
9368E	AS48	56.0	57.0	136.0	M54X1.5 Left	48.0	42.0
9447E	AS67	76.0	77.5	170.0	M74X1.5 Left	67.0	58.0



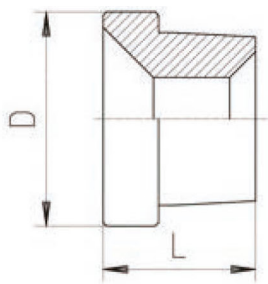
GILDEMEISTER PICK-UP COLLETS

Code	Description	d	D	L	a	Thread (F)	Diameter max	Hex max
C1101580	AS12	15.8	22.0	85.0	5°	M13X0.75 Left	12.0	10.0
Q0001870	GM16	18.7	25.0	51.5	8°	Atcb 21x1,5 60°	16.0	14.0
C1102600	AS16/20 GS/ GM20 PNEU- MATIC	26.0	28.5	80.0	6°	21.5X0.75	20.0	17.0
C0002800	AS16/20 GS/ GM20 IDRAULIC	28.0	32.0	64.0	8°	M24X1.5 Left	25.0	20.0
Q0002800	GM20 CNC	28.0	32.0	73.0	8°	Atcb 24.8x2.7	24.5	21.0
C1103000	AS32	30.0	34.7	63.0	15°	M20X1.5	22.0	21.0
C0003900	AS32	39.0	44.0	90.0	8°	M34X1 Left	35.0	28.0
C1103802	AS32	38.0	43.10	80.0	15°	M24X1.5	32.0	28.0
Q0003900	GM32/35	39.0	44.0	82.0	8°	AtcBØ11x4	32.0	28.0
Q0004700	GM42	47.0	52.5	73.0	8°	AtcBØ29x2.7	42.0	36.0
C0005600	AS48	56.0	60.0	95.0	8°	M51X1 Left	48.0	42.0
C1104504	AS67	45.0	90.1	100.0	15°	M28X1,5	67.0	58.0



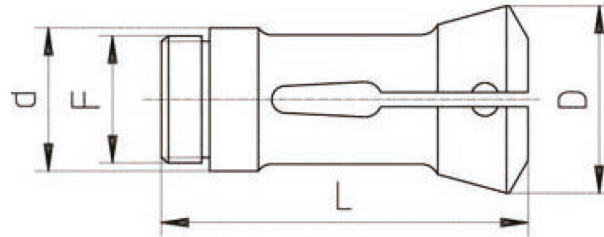
GILDEMEISTER FRONT SPINDLE

Code	Description	d	D	L	Diameter max	Hex max
PPGD20	AS16/20 GS/ GM20	20.0	26.0	60.0	20.0	-



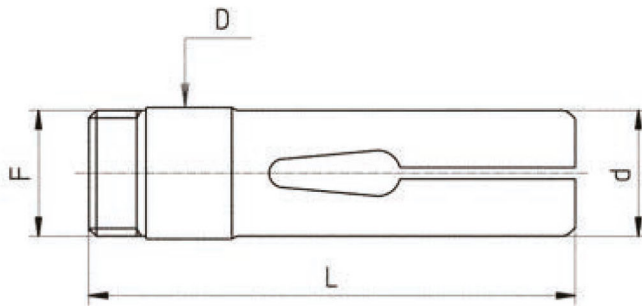
GILDEMEISTER GUIDE RINGS

Code	Description	d	D	L	Diameter max	Hex max
T1101851	GM16	16.0	18.5	18.0	13.0	10.0
T1101850	GM16	18.5	0.0	12.0	16.0	14.0
T1102850	AS16/20 GS/ GM20	28.5	0.0	10.0	25.0	22.0
T1102851	AS16/20 GS/ GM20	25.0	28.5	25.0	20.0	17.0
T1103020	AS25	26.3	30.2	8	25	22
T1104381	AS25	33	43.8	27	25	22
T1104001	GM32	40.0	47.8	43.0	32.0	27.0
T1104201	GM35	42.0	47.8	43.0	35.0	30.0
T1104700	GM42	47.0	52.0	43.0	42.0	36.0
T1103590	AS32	32.7	35.9	9.0	32.0	27.0
T1104380	AS32	33.0	43.8	27.0	32.0	27.0
T1105190	AS48	49.7	51.9	16.0	48.0	42.0
T1105750	AS48	49.0	57.5	35.0	48.0	42.0



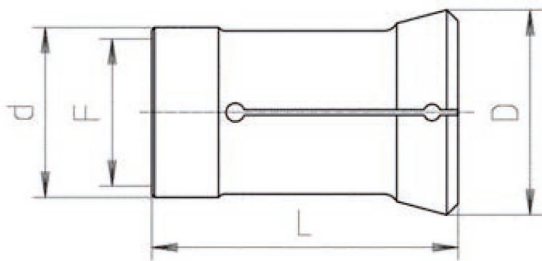
MORI-SAY CLAMPING COLLETS

Code	Description	d	D	L	a	Thread (F)	Diameter max	Hex max
9012E	6/20	34.0	42.0	90.0	16°	M30X1 Left	24.0	19.0
9034E	6/25-626	41.3	54.5	132.0	15°	Ø37,8 X 24 Left	30.0	24.0
9069E	6/32-8/32 Type Gildemeister	53.0	69.4	139.0	15°	M48X1.5 Left	38.0	31.0
9070E	6/32-8/32 Type Schütte	53.0	69.3	136.5	15°	M47X1.5 Left	38.0	32.0
9112E	6/42-8/42 Type Schütte	62.9	78.3	157.0	15°	M56X1.5 Left	49.0	41.0
9142E	6/57	76.86	95.5	181.0	15°	Ø72,46 X 22 Left	62.0	53.0
9181E	6/67	92.07	111.0	165.0	15°	Ø85,72 X 18 Left	77.0	65.0



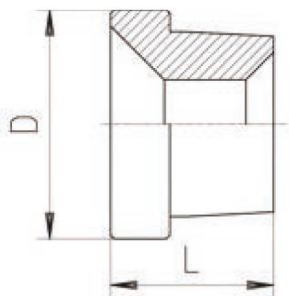
MORI-SAY FEED FINGERS

Code	Description	d	D	L	Thread (F)	Diameter max	Hex max
9258E	6/20	25.0	25.0	90.0	M24X1	20.0	17.0
9276E	6/25-626	31.0	31.9	133.0	Ø30,07 X 24 Left	25.0	22.0
9319E	6/32-8/32 Type Schütte	40.0	42.0	130.0	M38X1.5	32.0	28.0
9336E	6/32-8/32 Type Gild.	39.8	41.2	136.0	M38X1.5 Left	32.0	28.0
9372E	6/42-8/42 Type Schütte	48.0	51.0	158.0	M48X1.5	42.0	36.0
9409E	6/57	64.3	65.0	171.5	Ø65,509 X 22 Left	57.0	49.0
9445E	6/67	74.0	76.0	179.0	Ø73 X 24 Left	66.0	47.0



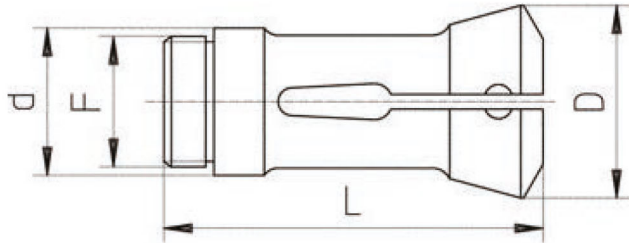
MORI-SAY PICK-UP COLLETS

Code	Description	d	D	L	a	Thread (F)	Diameter max	Hex max
C0002800	6/20	28.0	32.0	64.0	8°	M24X1.5 Left	24.0	20.0
Q0003550	6/25-626-6/32-8/32	35.5	40.0	80.0	8°	AtcB Ø 27 x 2,7 - 30	32.0	27.0
Q0004700	6/42-8/42	47.0	52.5	73.0	8°	AtcBØ29x2.7	42.0	36.0
Q4506000	6/57-6/67	60.0	72.6	75.0	15°10'	AtcBØ29x2.5	51.0	42.0



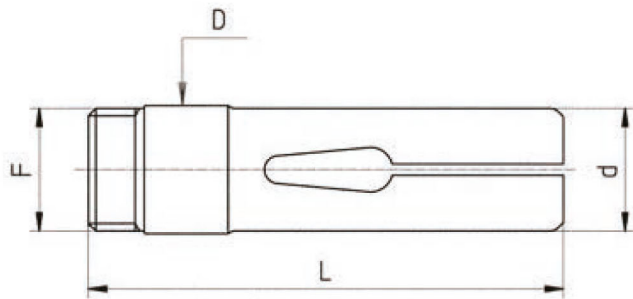
MORI-SAY GUIDE RINGS

Code	Description	d	D	L	Diameter max	Hex max
TMS620	6/20	24.0	25.0	28.2	20.0	17.0
TMS625	6/25	0.0	30.0	18.0	25.0	22.0
TMS626	626	35.0	42.5	40.0	26.0	23.0
TMS632	6/32-8/32	0.0	36.0	18.0	32.0	28.0
TMS642	6/42-8/42	0.0	46.0	18.0	42.0	36.0
TMS667	6/67	0.0	75.0	25.0	67.0	57.0



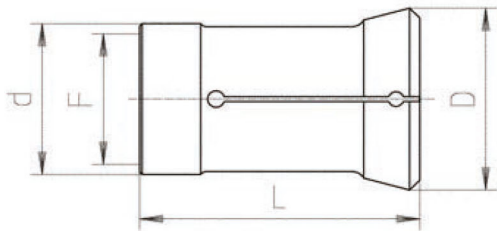
Schütte CLAMPING COLLETS

Code	Description	d	D	L	a	Thread (F)	Diameter max	Hex max
9015E	SF13	25.0	36.1	75.0	15° 10'	M22X1 Left	13.0	11.0
9007E	SE16/18	31.9	42.0	84.0	15°	M28X1 Left	19.0	17.0
90076H	SG18-AG20	32.0	41.8	84.0	15°	M28X1 Left	18.0	16.0
90078H	SG18-AG20	320.0	41.5	84.0	15°	M30X1 Left	23.0	19.0
9016E	SF20	32.0	41.5	84.0	15°	M30X1 Left	20.0	17.0
9039E	SD/SE25-AF26	46.0	60.3	120.0	15°	M40X1.5 Left	30.0	28.0
SEF0020	36PC	56.0	72.0	139.0	15°	M52X1.5 Left	36.0	31.0
9070E	SD/SF/AF32	53.0	69.3	136.5	15°	M47X1.5 Left	38.0	32.0
9112E	AD40-SF42	62.9	78.3	157.0	15°	M56X1.5 Left	49.0	41.0
9139E	AF51-SF51-SD50	75.0	97.8	187.0	15°	M68X1.5 Left	51.0	44.0
9179E	SF63	90.0	115.3	212.0	15°	M82X1.5 Left	63.0	55.0
9187E	SF67	89.9	115.4	180.0	15°	M85X1.5 Left	70.0	63.0
9210E	SF81	109.0	138.8	241.0	15°	M100X1.5 Left	80.0	73.0



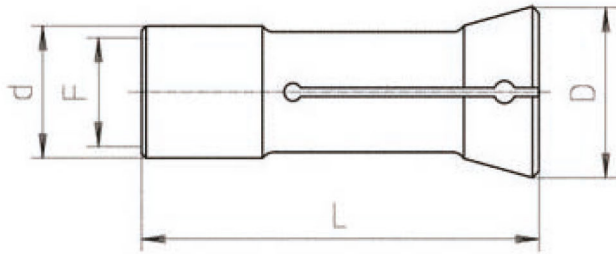
Schütte FEEDING FINGERS

Code	Description	d	D	L	Thread (F)	Diameter max	Hex max
9261E	SF13	17.0	19.6	77.0	M18X1	11.0	11.0
9255E	SE16/18- SG18-AG20	23.0	25.0	88.0	M23X1	16.0	17.0
9262E	SF20	25.0	27.0	88.0	M25X1	17.0	16.0
9282E	SD/SE25-AF/ SF26	33.0	35.0	118.0	M33X1.5	23.0	19.0
9319E	SD/SF/AF32	40.0	42.0	130.0	M38X1.5	28.0	17.0
9372E	AD40-SF42	48.0	51.0	158.0	M48X1.5	36.0	28.0
9406E	SD50/AF51	58.0	62.0	180.0	M58X1.5	51.0	44.0
9450E	SF63	72.0	77.0	210.0	M72X1.5 Left	63.0	55.0
9456E	SF67	78.0	78.0	196.0	M75X1.5 Left	67.0	50.0
9474E	SD80	90.0	92.8	238.0	M88X1.5 Left	80.0	70.0



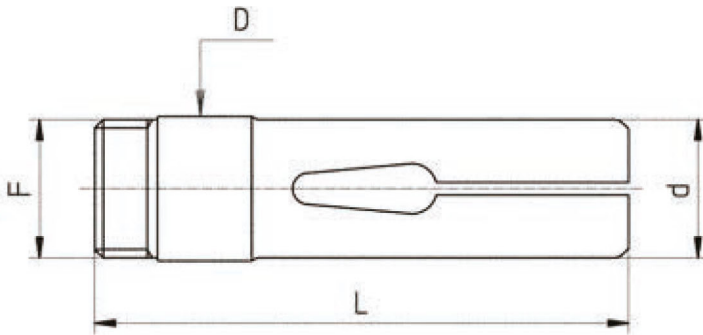
Schütte PICK-UP COLLETS

Code	Description	d	D	L	a	Thread (F)	Diameter max	Hex max
Q2202500	SG18-AG20	25.0	32.1	91.5	15°10'		19.0	16.0
C0002800	SE16/25	28.0	32.0	64.0	8°	M24X1.5 Left	24.0	20.0
C2202800	SF20/SF26	28.0	36.0	53.0	15°10'	M24X1.5 Left	22.0	19.0
C2203200	SE25-SF26	32.0	46.0	71.0	15°	M22X1.5 Left	26.0	23.0
Q0003550	SE25-SF26	35.5	40.0	80.0	8°10'	AtcBØ27x2.7 30°	32.0	27.0
C0003900	SD/SF/AF32	39.0	44.0	90.0	8°	M34X1 Left	35.0	28.0
Q0004700	AD40-SF42	47.0	52.5	73.0	8°	AtcBØ29x2.7 30°	42.0	36.0
A2205200	AD40-SF42	52.0	60.5	60.0	15° 10'		40.0	35.0
C0005600	AD40-SF42-SF51	56.0	60.0	95.0	8°	M51X1 Left	48.0	42.0
A2204400	S32PC-S36PC	44.0	54.0	76.0	15°	M51X1 Left	34.0	-



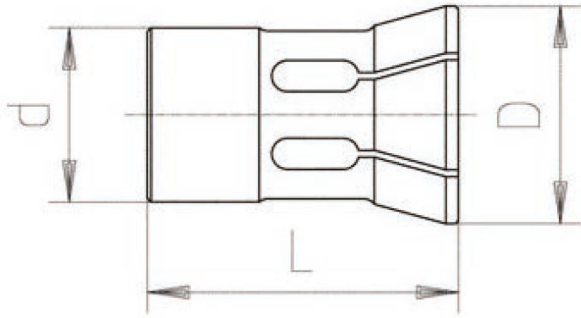
WICKMAN CLAMPING COLLETS

Code	Description	d	D	L	a	Thread (F)	Diameter max	Hex max
9014E	5/8"	29.4	38.1	92.0	15°	Ø26,21 X 24	17.0	15.0
9034E	1"	41.3	54.5	132.0	15°	Ø37,8 X 24 Left	30.0	24.0
PIWOVE	1" Oversize 30mm.	49.21	60.72	110.0	15°	M44.2X1 Left	34.0	28.0
9072E	1 3/8"	55.47	67.0	117.0	15°	Ø50,927 X 22 Left	41.0	34.0
9111E	1 3/4"	64.21	78.5	127.0	15°	Ø60,45 X 16 Left	46.0	40.0
9142E	2 1/4"	76.86	95.5	181.0	15°	Ø72,46 X 22 Left	62.0	53.0
9181E	2 5/8"	92.07	111.0	165.0	15°	Ø85,72 X 18	77.0	65.0



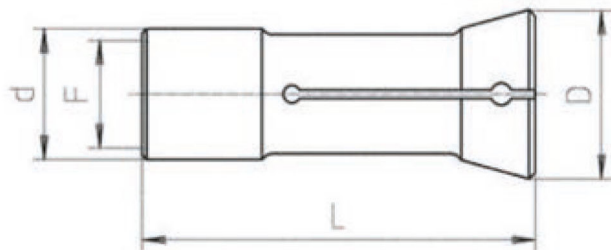
WICKMAN FEED FINGERS

Code	Description	d	D	L	Thread (F)	Diameter max	Hex max
9260E	5/8"	21.6	21.6	86	Ø19,53 X 24 Left	16.0	13.0
9276E	1"	31.0	31.9	133	Ø30,07 X 24 Left	26.0	22.0
9318E	1 3/8"	41.5	42.84	118	Ø40,46 X 22 Left	36.0	31.0
9362E	1 3/4"	51.5	52.21	127	Ø49,98 X 22 Left	44.0	38.0
9409E	2 1/4"	64.3	65.1	171	Ø62,509 X 22 Left	57.0	49.0
9445E	2 5/8"	74.0	76.0	179	Ø73 X 24 Left	66.0	47.0



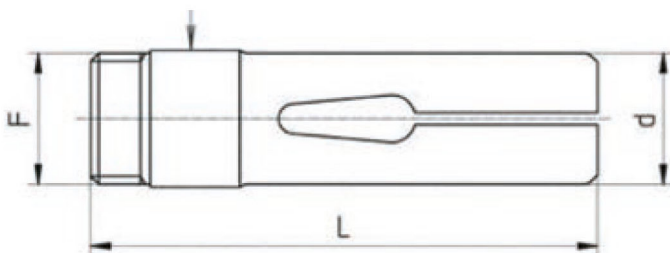
WICKMAN PICK-UP COLLETS

Code	Description	d	D	L	a	Thread (F)	Diameter max	Hex max
C0002800	5/8"	28.0	32.0	64.0	8°	M24X1.5 Sin.	25.0	20.0
A1201900	5/8"	19.04	25.4	55.56	15°		14.0	12.0
A1202540	1"	25.4	38.0	94.0	15°30'		20.0	17.0
A1203960	1"3/8-3/4	39.67	65.0	122.0	15°		33.0	29.0
Q0003550	1"	35.5	40.0	80.0	8°	AtcBØ27x2.7 30°	32.0	27.0
C0006500	2"1/4	65.0	70.0	84.0	8°	M54X1 Left	57.0	49.0
Q0004700	1"3/8-3/4	47.0	52.5	73.0	8°	AtcBØ29x2.7	42.0	36.0



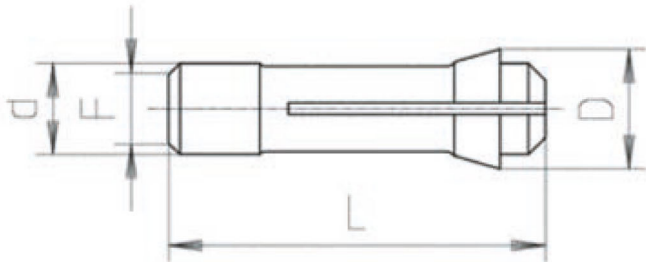
TORNOS CLAMPING COLLETS

Code	Description	d	D	L	a	Thread (F)	Diameter max	Hex max
9001E	AS14	25.0	35.0	75.0	15°	M22X1	14.0	11.0
9021E	SAS16	25.0	35.0	94.0	15° 30'	M25X1	16.0	14.0
9020E	BS20	36.0	45.0	107.0	15° 30'	M33X1.25	20.0	17.0
9039E	MULTI-DECO 26	46.0	60.3	120	15°	M40X1.5 Left	30.0	28.0
9012E	MULTI-DECO 20	34.0	42.0	90.0	16°	M30X1.0 Left	24.0	19.0



TORNOS FEED FINGERS

Code	Description	d	D	L	Thread (F)	Diameter max	Hex max
9251E	AS14	17.5	18.0	70.0	M16X0.75	14.0	11.0
9265E	SAS16	20.5	22.8	98.0	M20X0.75	16.0	14.0
9266E	BS20	25.3	27.7	116.0	M25X1	20.0	17.0

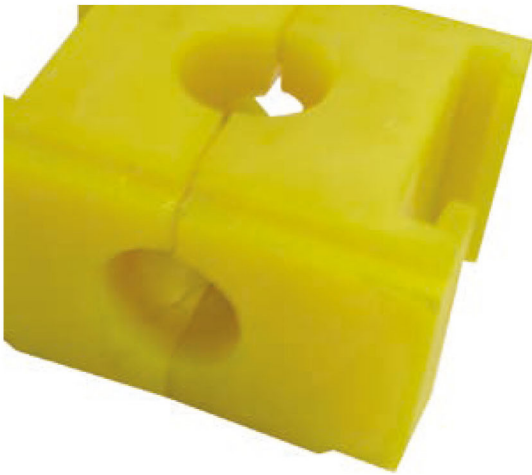


TORNOS PICK-UP COLLETS

Code	Description	d	D	L	a	Thread (F)	Diameter max	Hex max
F16/830	AS14-SAS16	16.0	21.0	66.0	16°	M14X0.75	13.0	8.0
Q0003550	MULTI-DECO 26	35.5	40.0	80.0	8°	AtcBø27x2,7	32.0	27.0
Q0002800	MULTI-DECO 20	28.0	32.0	73.0	8°	AtcBø24.8x2.7	24.5	21.0



**TURNING
CONCEPTS**
Solutions to the Metal Working Industry



COLLETS BARLOADER

Steel Collets with Thread

Steel collets for Pietro Cucchi automatic barloaders

Rubber Collets with Thread

Rubber collets with right or left thread for Pietro Cucchi and lemca automatic barloaders

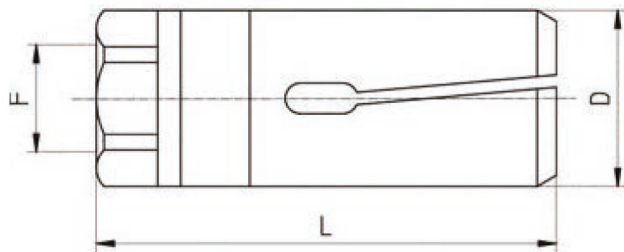
Steel Collets Chucks

Steel collets with pin chuck for lemca automatic barloaders

Rubber Collets Chucks

Rubber collets with pin chuck for lemca automatic barloaders



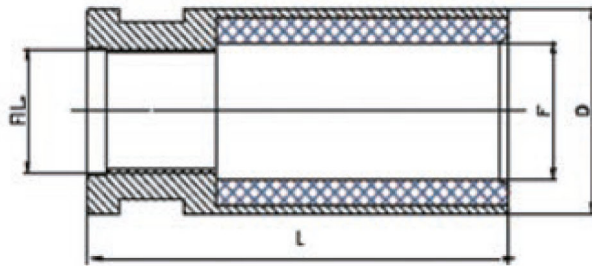


STEEL COLLETS WITH LEFT THREAD

Code	Description	D	L	Thread (F)	Diameter max	Hex max
PB20	CUCCHI PB20	20.0	60.0	M10X1 Left	18.0	15.0
PB25	CUCCHI PB25	25.0	60.0	M14X1 Left	23.0	19.0
PB30	CUCCHI PB30	29.0	65.0	M18X1.5 Left	28.0	24.0
PB32	CUCCHI PB32	32.0	65.0	M18X1.5 Left	30.0	26.0
PB35	CUCCHI PB35	35.0	70.0	M18X1.5 Left	33.0	28.0
PB40	CUCCHI PB40	39.0	70.0	M25X1.5 Left	37.0	34.0
PB48	CUCCHI PB48	47.0	70.0	M30X1.5 Left	46.0	38.0
PB60	CUCCHI PB60	59.0	80.0	M30X1.5 Left	55.0	48.0
PB70	CUCCHI PB70	69.5	80.0	M30X1.5 Left	65.0	55.0

STEEL COLLETS WITH RIGHT THREAD

Code	Description	D	L	Thread (F)	Diameter max	Hex max
036070	IEMCA	7.00	40.0	5X0.5	7.0	6.0
036100	CUCCHI	10.0	50.0	6X0.75	8.0	7.0
036101	IEMCA	10.0	40.0	6X0.75	8.0	7.0
036120	CUCCHI	12.0	52.0	7X0.75	10.0	8.0
036121	IEMCA	12.0	42.0	7X0.75	10.0	8.0
036140	CUCCHI	14.0	52.0	8X1	12.0	11.0
036150	CUCCHI	15.0	52.0	8X1	12.0	11.0
036151	IEMCA	15.0	42.0	8X1	13.0	11.0
036160	CUCCHI	16.0	52.0	8X1	14.0	12.0
036161	IEMCA	16.0	42.0	8X1	14.0	12.0
036180	CUCCHI	18.0	59.0	10X1	16.0	13.0
036200	CUCCHI - IEMCA	20.0	59.0	10X1	18.0	15.0
036220	CUCCHI - IEMCA	22.0	59.0	10X1	20.0	18.0
036250	IEMCA	25.0	59.0	10X1	23.0	19.0
036251	CUCCHI	25.0	59.0	14X1	23.0	19.0
036300	IEMCA	30.0	65.0	10X1	28.0	24.0
036301	CUCCHI	30.0	65.0	18X1.5	28.0	24.0
036320	IEMCA	32.0	65.0	10X1	30.0	25.0
036400	CUCCHI - IEMCA	40.0	70.0	25X1.5	37.0	32.0
036420	CUCCHI - IEMCA	42.0	70.0	25X1.5	39.0	33.0
036460	CUCCHI - IEMCA	46.0	72.0	25X1.5	42.0	34.0
036600	CUCCHI - IEMCA	60.0	80.0	25X1.5	55.0	48.0
036650	CUCCHI - IEMCA	65.0	80.0	25X1.5	60.0	50.0
036700	CUCCHI - IEMCA	70.0	80.0	25X1.5	65.0	55.0
036750	CUCCHI - IEMCA	75.0	80.0	25X1.5	70.0	60.0

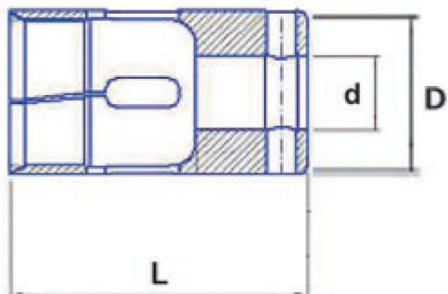


RUBBER COLLETS WITH LEFT THREAD

Code	Description	D	L	Thread (F)
PCCHP19	PB19	18.5	60.0	M10X1 Left
PCCHP23	PB23	23.0	60.0	M14X1 Left
PCCHP24	PB24	24.0	60.0	M14X1 Left
PCCHP28	PB28	28.0	65.0	M18X1.5 Left
PCCHP29	PB29	29.0	65.0	M18X1.5 Left
PCCHP30	PB30	30.0	65.0	M18X1.5 Left
PCCHP32	PB32	32.0	65.0	M18X1.5 Left
PCCHP35	PB35	35.0	65.0	M18X1.5 Left
PCCHP38	PB38	38.0	70.0	M25X1.5 Left
PCCHP40	PB40	40.0	70.0	M25X1.5 Left
PCCHP42	PB42	42.0	70.0	M25X1.5 Left
PCCHP43	PB43	43.0	70.0	M30X1.5 Left
PCCHP46	PB46	46.0	70.0	M30X1.5 Left
PCCHP48	PB48	48.0	70.0	M30X1.5 Left
PCCHP50	PB50	50.0	70.0	M30X1.5 Left
PCCHP52	PB52	52.0	70.0	M30X1.5 Left
PCCHP56	PB56	56.0	80.0	M30X1.5 Left
PCCHP60	PB60	60.0	80.0	M30X1.5 Left
PCCHP65	PB65	65.0	80.0	M30X1.5 Left
PCCHP68	PB68	68.0	80.0	M30X1.5 Left
PCCHP72	PB72	72.0	80.0	M30X1.5 Left
PCCHP80	PB80	80.0	80.0	M30X1.5 Left

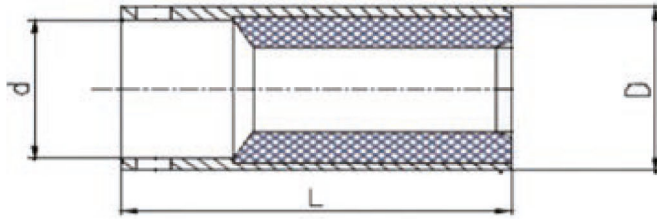
RUBBER COLLETS WITH RIGHT THREAD

Code	D	L	Thread (F)
PCIMM07.5	7.05	40.0	M5X0.5
PCIMM10	10.0	40.0	M6X0.75
PCCHM10	10.0	52.0	M6X0.75
PCIMM12	12.0	42.0	M7X0.75
PCCHM12	12.0	52.0	M7X0.75
PCIMM15	15.0	42.0	M8X1
PCCHM15	15.0	52.0	M8X1
PCIMM18	18.0	42.0	M8X1
PCIMM20	19.0	60.0	M10X1
PCIMM25	25.0	60.0	M10X1
PCIMM30	30.0	65.0	M10X1
PCCHM30	30.0	65.0	M18X1.5
PCIMM32	32.0	65.0	M10X1
PCIMM35	35.0	65.0	M17X1
PCCHM35	35.0	65.0	M18X1.5
PCCHM40	40.0	70.0	M25X1.5
PCIMM42	42.0	70.0	M25X1.5
PCIMM45	45.0	80.0	M25X1.5
PCIMM50	50.0	80.0	M25X1.5
PCCHM50	50.0	80.0	M30X1.5
PCIMM55	55.0	80.0	M25X1.5
PCCHM55	55.0	80.0	M30X1.5
PCIMM60	60.0	80.0	M25X1.5
PCCHM60	60.0	80.0	M30X1.5
PCIMM65	65.0	80.0	M25X1.5
PCCHM65	65.0	80.0	M30X1.5
PCIMM68	68.0	80.0	M25X1.5
PCIMM70	70.0	80.0	M30X1.5
PCCHM70	70.0	80.0	M25X1.5
PCIMM72	72.0	80.0	M25X1.5



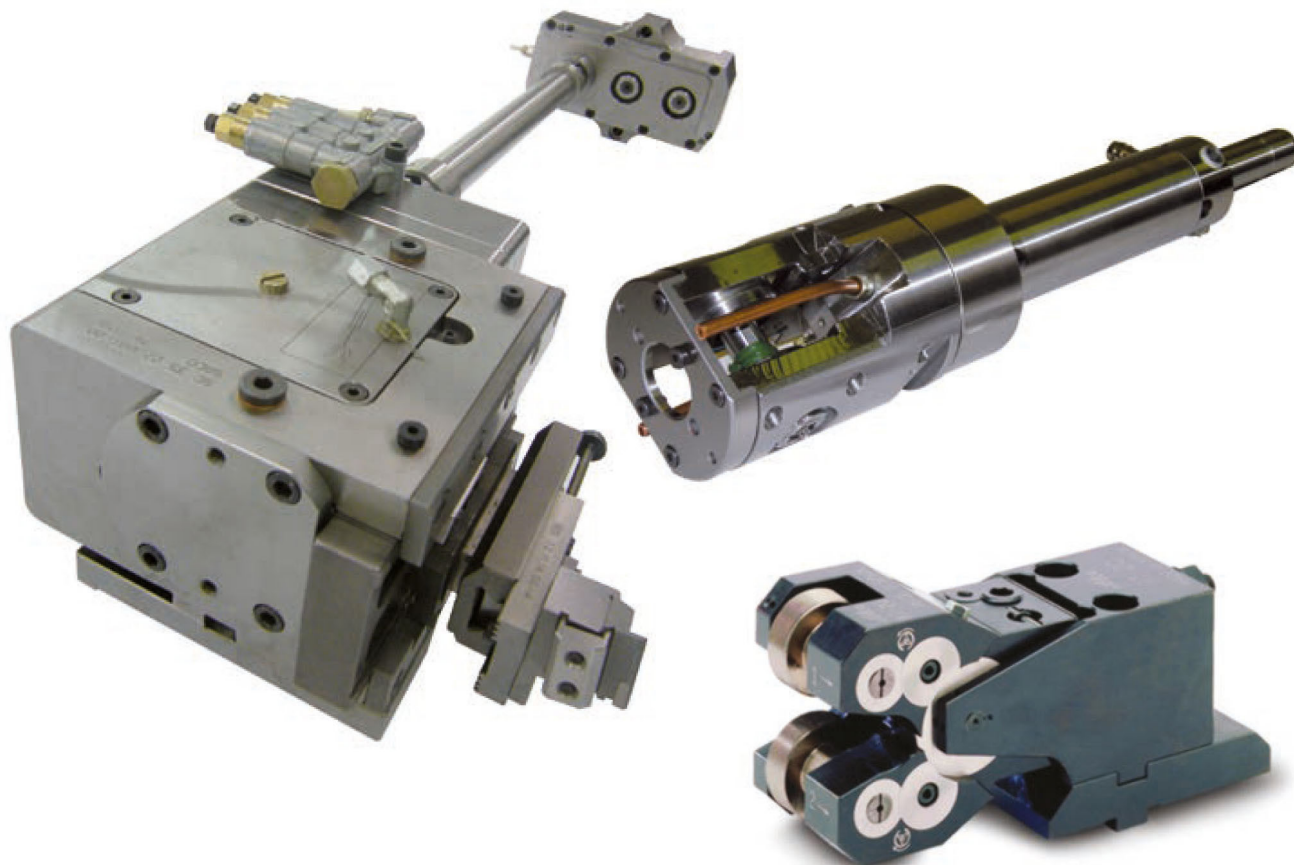
STEEL COLLETS CHUCKS

Code	D	L	Thread (F)	Diameter max	Hex max
203E	15.0	40.0	11H7	13.0	10.0
218E	18.0	40.0	11H7	16.0	13.0
222E	25.0	65.0	20H7	23.0	19.0
227E	28.0	65.0	20H7	25.0	21.0
SHK32	32.0	65.0	20H7	29.0	25.0
SHK36	36.0	65.0	20H7	30.0	26.0



RUBBER COLLETS CHUCKS

Code	D	L	Thread (F)
PCCIMFT12	12.0	50.0	8.0
PCIMFT15	15.0	80.0	11.0
PCIMFT18	18.0	50.0	11.0
PCIMFT20	20.0	65.0	14.0
PCIMFT21	21.0	72.0	14.0
PCIMFT25	25.0	72.0	20.0
PCIMFT29	29.0	72.0	20.0
PCIMFT32	32.0	72.0	20.0
PCIMFT36	36.0	72.0	20.0
PCIMFT42	42.0	72.0	20.0
PCIMFT45	45.0	72.0	20.0



WE HAVE ATTACHMENTS FOR:

**GILDEMEISTER
WICKMAN
MORI SAY**

**SCHUTTE
INDEX
TORNOS LATHES**





WE HAVE SPARE PARTS FOR:

**GILDEMEISTER
WICKMAN
MORI SAY**

**SCHUTTE
INDEX
TORNOS LATHES**



WE ALSO CARRY:

**TOOLHOLDERS
THREAD MILLING
SPECIAL TOOLS**





Maintaining your equipment
to its **optimum performance** is
important to your **business**.

Turning Concepts has the knowledge and expertise to help you on your next project. Call one of our **experts today** and see the **difference** working with **Turning Concepts** can make **for your business**.

Turning Concepts
701 Matthews Mint-Hill Road
Matthews, NC 28104

Phone (704) 849-9209

***TURNING
CONCEPTS***
Solutions to the Metal Working Industry



Visit us online @ **turningconcepts.com**

catalog COLCAT | rev 11.29.18