

TURNING CONCEPTS

Solutions to the Metal Working Industry



Attachments and Spare Parts for
Multi-Spindle Machines

machine

Gildemeister - FAT

for models

AS25

AS82-AS100

AS32-AA32

GS28/8

AS48-AA48

GS35

AS67-AA67

catalog

Gildemeister FAT Repair Parts Catalog

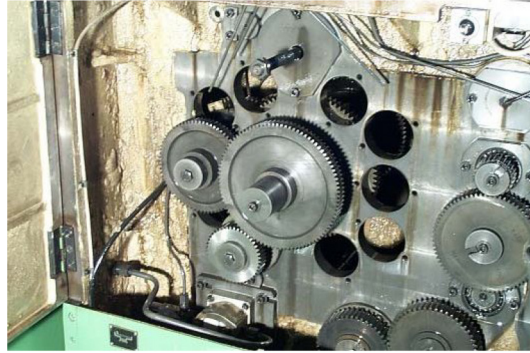
GILDEMEISTER

Call us today **(704) 849-9209** or visit us online @ **turningconcepts.com**

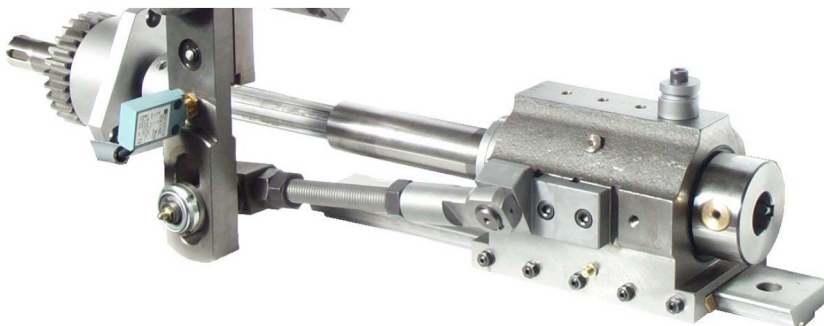
TABLE OF CONTENTS

AS25	page 3
AS32-AA32	page 16
AS48-AA48	page 32
AS67-AA67	page 47
AS82-AS100	page 64
GS28/8	page 66
GS35	page 67

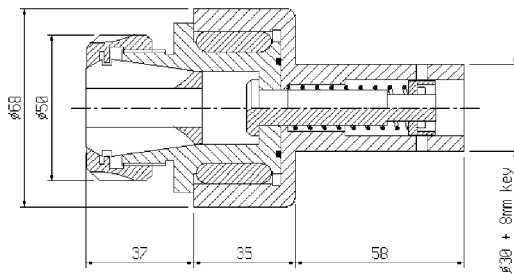
FULL THREADING ATTACHMENT



- We can supply the entire attachment.
- All gears and shafts are hardened and grinded.
- The mechanical parts are supplied and fitted together..



TAPPING ACCESSORIES TURLO'S TAP HOLDER WITH EXTRACTION

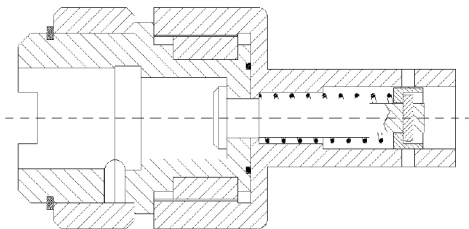


ER32 = 4mm-20mm

TURLO'S DIE HOLDER WITH EXTRACTION



tap holder with Bilz quick-change adaptor size2



TAPPING ACCESSORIES ORIGINAL TAP OR DIE HOLDER WITH RELEASE

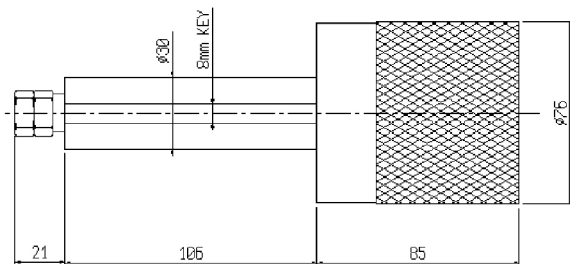
Ref. 362-856.00



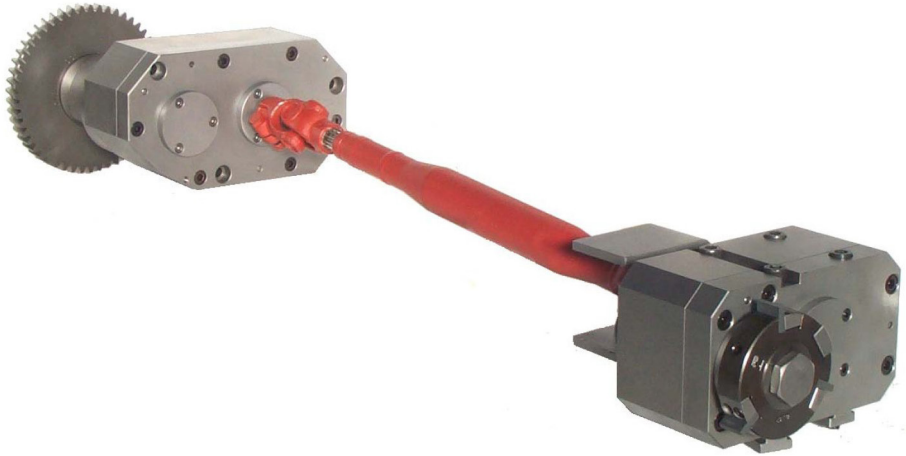
With this kind of tap-holder you can set exactly the length of the thread before doing the job. Even if the forwarding speed is still on, after having reached the pre-set length, the tap holder will start to rotate free. It is indispensable when you have two tapping operations on the same machine. In that case

While the original works with several tap-holder for different sizes taps, we have designed a tool-holder for collets type ER32, that can hold 4 to 20mm taps.

Die-holder are also available.



POLYGON-GENERATING ATTACHMENT



This attachment is designed to create polygons on the external surface of the component. The tool rotates twice quicker than the component with the same direction.

For this reason the number of flats made on the component are always twice the number of cutters on the tool.

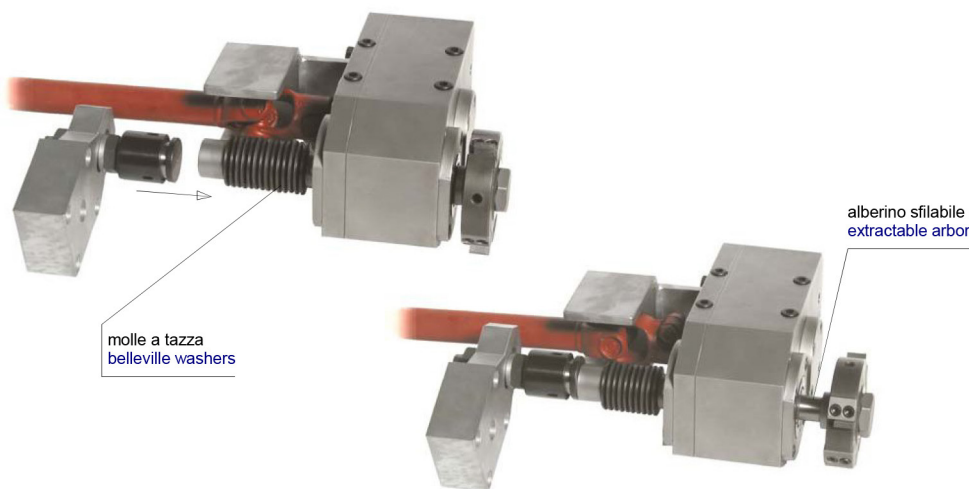
We can also supply cutter tools for polygon generating options. As you can see in the bottom picture, they have the possibility to hold 1 cutter (= 2 flats at 180 degrees) or 2 cutters at 180 degrees (= square) or 3 cutters at 120 degrees (= hexagon). We can supply different sizes of cutters that need to be grinded by the customer.



POLYGON-GENERATING ATTACHMENT WITH LONGITUDINAL MOVEMENT



This attachment has got an extractable tool-arbor in the cross slide head. The tool-arbor back end is outside the head, so it can be pushed forward by a bracket fixed on the centre flock in the same station. A set of belleville washers will pull the arbor into starting position at the end of the cycle. This kind of attachment is very good for long polygon jobs and even better for hard jobs on steel materials. In this case we suggest to use special tools with standard inserts. Please note that using this attachment can avoid buying very expensive compound slides.



THREAD MILLING ATTACHMENT



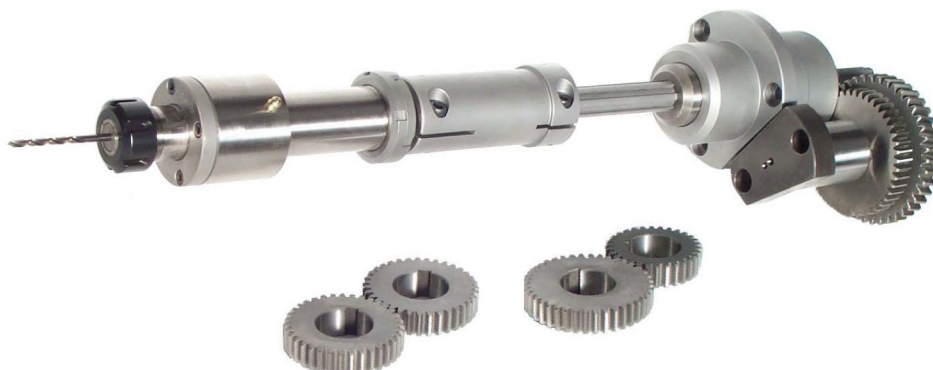
This attachment is designed to create external threads on the component. The tool (that we do not supply) rotates at the same speed and direction of the bar. We also can supply smaller drill-holders (bottom picture) in order to make drilling operations in the same station where you are fitting the attachment.



HIGH SPEED DRILLING ATTACHMENT

The High Speed Drilling Attachment is usually supplied with ER type collets and with different couples of ration gears.

It is now available in the coolant fed version: the coolant liquid can be pushed through the tool at high pressure during the drilling operation.



INDEPENDENT DRILL HOLDER

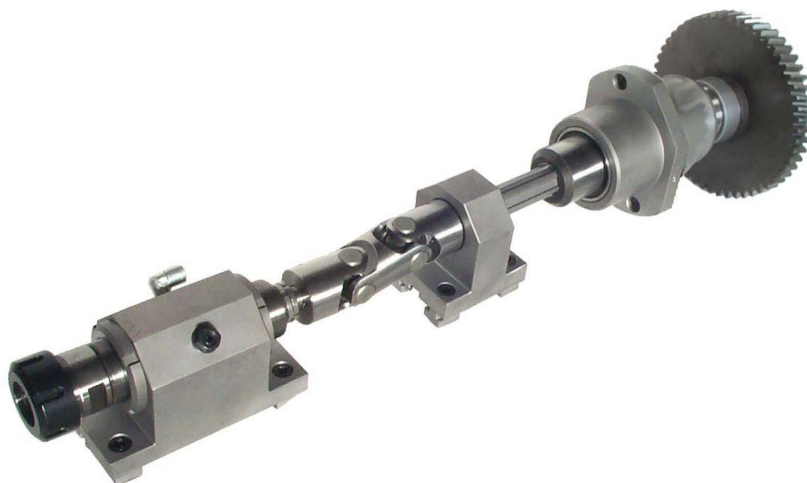
It can have a straight bore to hold directly the drill, or have a ER collet. It can also be made suitable for holding a rotating drill spindle (see previous page).



BROACHING ATTACHMENT

This attachment is designed to create polygons or geometrical profiles inside the component. It has to be fitted on the center block of the machine (longitudinal side). The tool rotates at the same speed as the bar. The standard tool-spindle uses ER type collets.

The tool spindle has a slight inclination versus the axis of the component in order to reduce the axial load during the broaching operation.



RAMP RECESSING ATTACHMENT

TECHNICAL DATA:

- 14 degree ramp (or other inclinations on demand)
- Tool Fitting = 25 mm diameter bore (eccentric)
- Possibility of lubrication liquid through the tool
- Up and down adjustable tool holder



The attachment is used to create recesses inside the component. It has to be located on the central block of the machine. After reached the right position inside the component the tool-holder moves upwards, sliding on a 14 degree ramp (that means 1 mm upwards every 4 mm of axial movement of the central block).

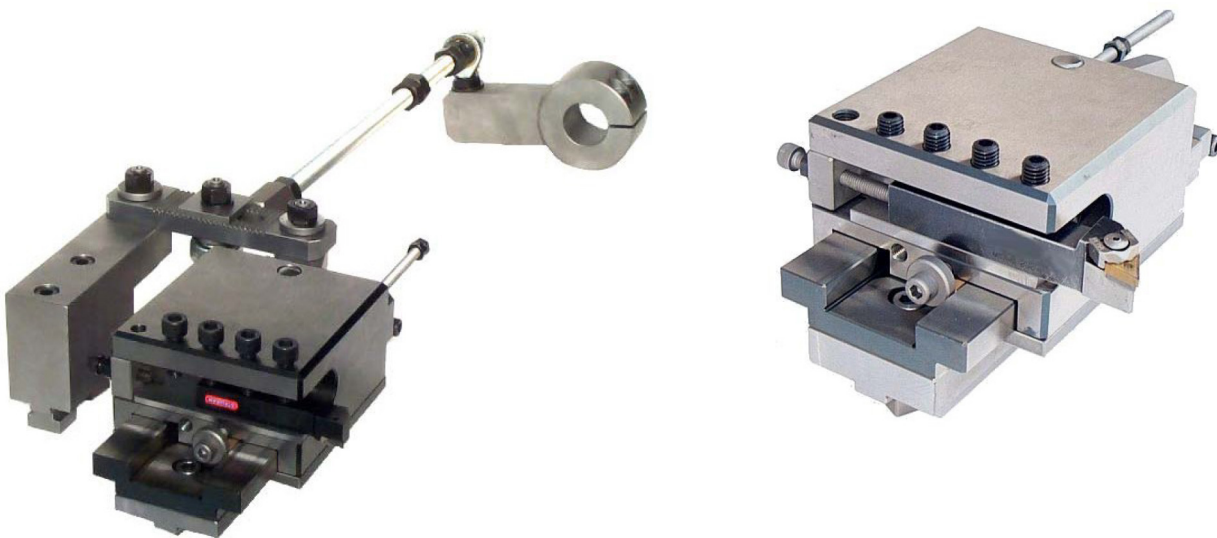
The length of the recess is usually the same as the length of the cutting tool. However, if you need to create longer recesses, our attachment can also move axially while making the recess.

SPHERE CUTTING ATTACHMENT

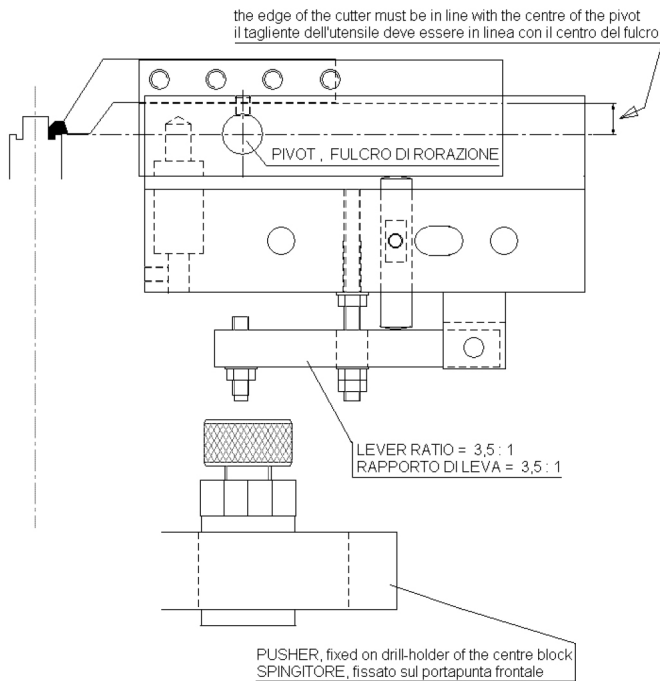


This attachment is designed to create radial slots on the external surface of the component. The tool rotates at the same speed as the component with opposite direction.

LONGITUDINAL TURNING CHARIOT

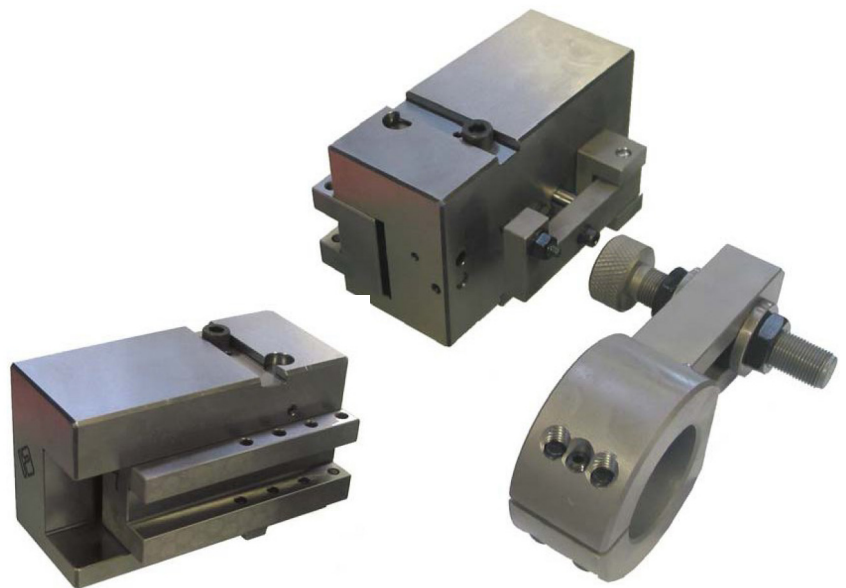


COLLET SIDE GROOVING ATTACHMENT



It is fixed on cross slide and it makes back or frontal grooving operations. The tool is not included and must be properly profiled by the customer. The cutter moves on a circle but, because of its distance to the pivot and its small movement inside the part, the result is like it does a straight movement.

The tool-holder is pushed by a bracket fixed on the center block.



MARKING ATTACHMENT

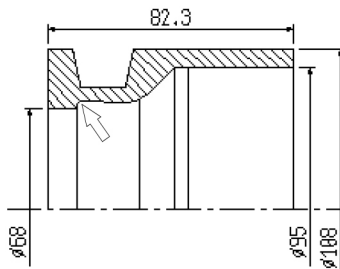
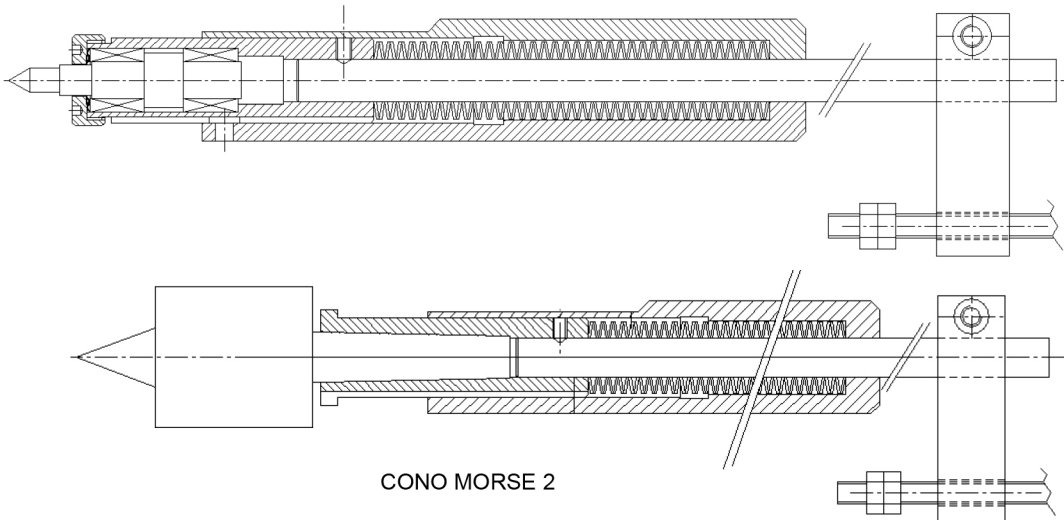
This attachment is used for marking the components in a very simple and quick way, because it is based on a completely mechanical logic. The cross slide, with our attachment on, moves forward till the engraved disk touches the component.

Because of the friction between them, the disk starts to turn and mark the component. When the engraving is over, the disk stops in a fixed position to avoid further contact with the component.

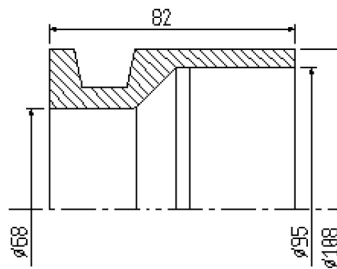
During the return stroke a popper pin fixed on the wall of the machine resets the attachment with the disk able to turn again. We can supply blank disks only together with the instructions about how to engrave them.



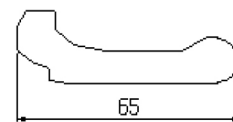
ROTATING LIVE CENTER WITH COMPENSATION



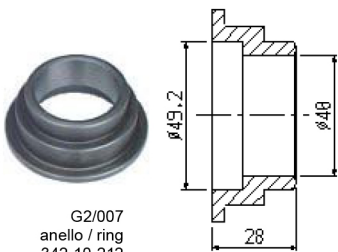
G2/001
campana/sleeve



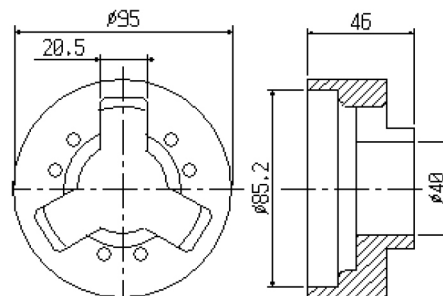
G2/002
campana/sleeve



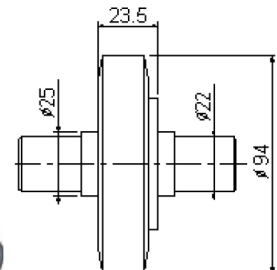
G2/003
martelletto/toggle
341-10-213



G2/007
anello / ring
342-10-212



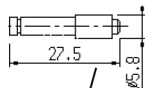
G2/011
mozzo / ring
341-10-214



G2/040
rullo / roller



G2/013
ghiera/nut
342-10-220/2



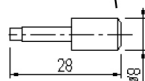
G2/016
spina/pin
342-10-225



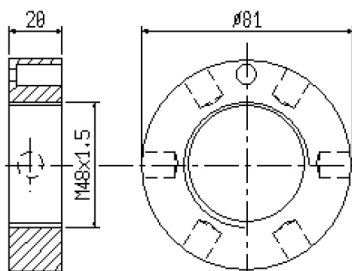
G2/014
ghiera/nut
342-10-222/2



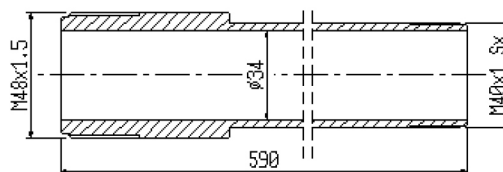
G3/090
Molla a tazza/spring
342-10-216



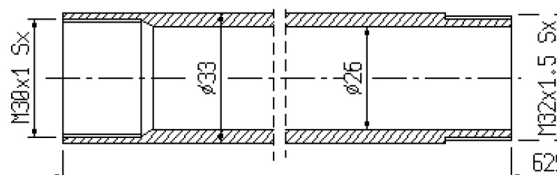
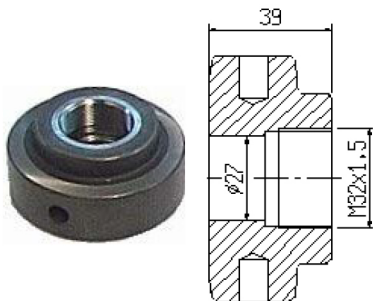
G2/017
spina/pin
342-10-228



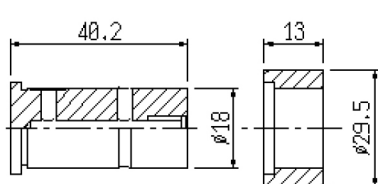
G2/009
ghiera / nut
342-10-221



G2/010
tubo stringibarra / collet tube
351-10-217

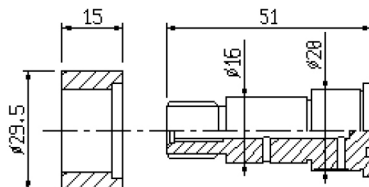


G3/012
tubo spingibarra / feed tube



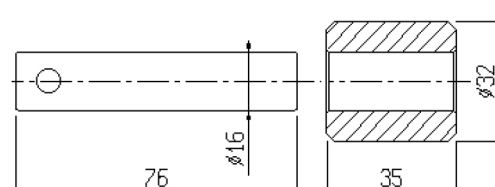
G3/031P
perno / pin

G3/031R
rullo / roller



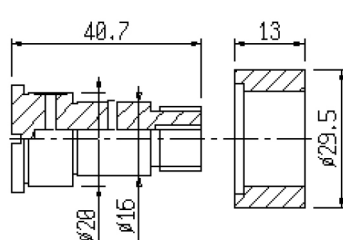
G3/032R
rullo / roller

G3/032P
perno / pin



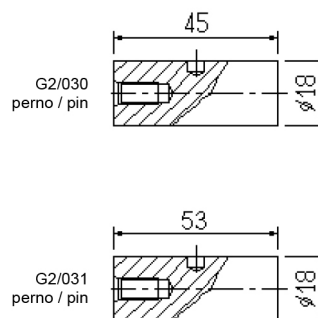
G3/038P
perno / pin

G3/038R
rullo / roller



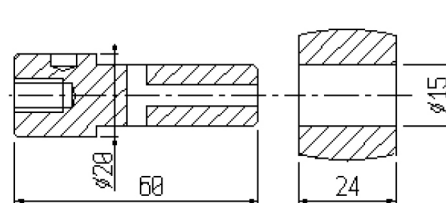
G3/030R
rullo / roller

G3/030P
perno / pin



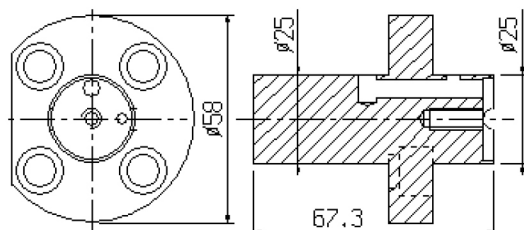
G2/030
perno / pin

G2/031
perno / pin

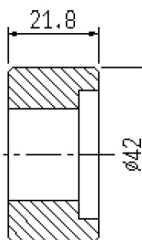


G3/037P
perno / pin

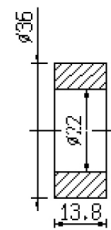
G3/037R
rullo / roller



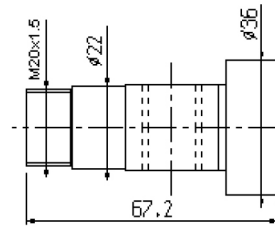
G3/033P
Perno blocco centrale / centre block pivot
302-19-106



G3/033R
rullo / roller
302-19-107



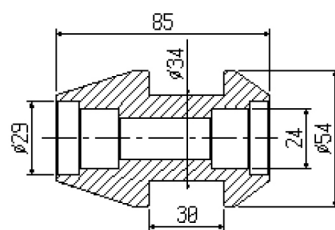
G5/039R
rullo / roller



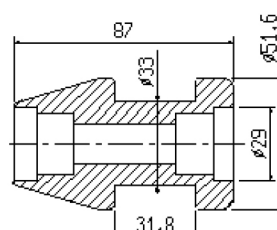
G5/039P
perno / pin



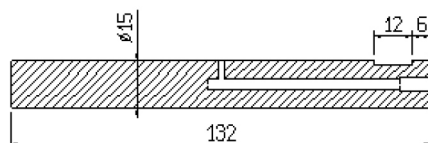
G5/039
303-08-1380/001



G4/050
rullo/roller



G3/050
rullo/roller
343-09-1370



G3/052
perno/pin

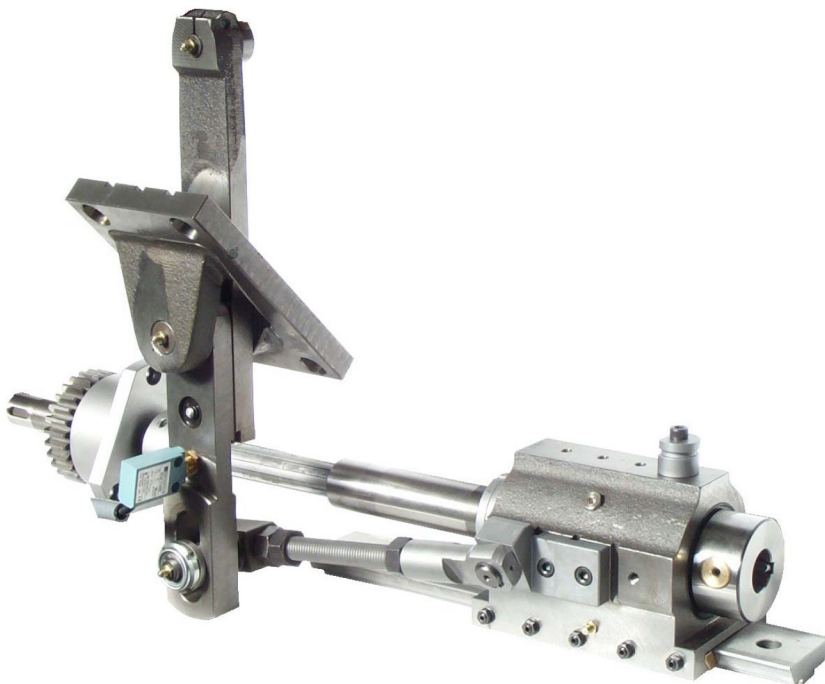


Coppie ruote rapporti velocità/tempi
Pairs of feed and speed gears

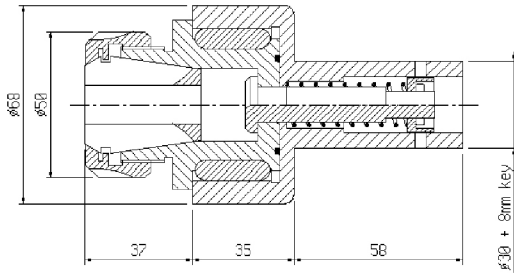
FULL THREADING ATTACHMENT



- We can supply the entire attachment as shown by the picture.
- Our attachment is based on electromagnetic clutches.
- All gears and shafts are hardened and grinded.
- The mechanical parts are supplied fitted together.
- The 2 electromagnetic clutches are piloted by our Power Unit.
- We also supply the lever pushing set complete with the cam.
- The microswitch set on the lever stops the machine in case breakdown of the lever caused by the threading spindle when the tap stacks in the component.



TAPPING ACCESSORIES TURLO'S TAP HOLDER WITH EXTRACTION

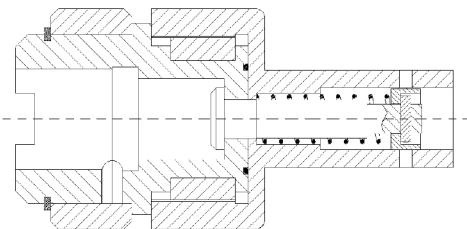


ER32 = 4mm-20mm

TURLO'S DIE HOLDER WITH EXTRACTION



tap holder with Bilz quick-change adaptor size2

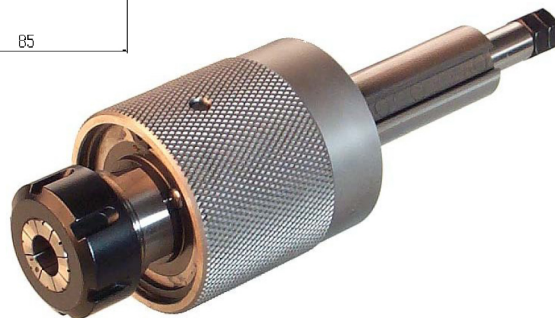
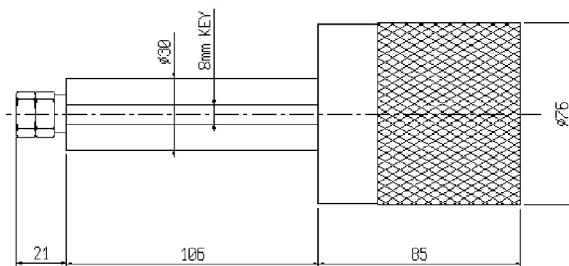


TAPPING ACCESSORIES ORIGINAL TAP OR DIE HOLDER WITH RELEASE

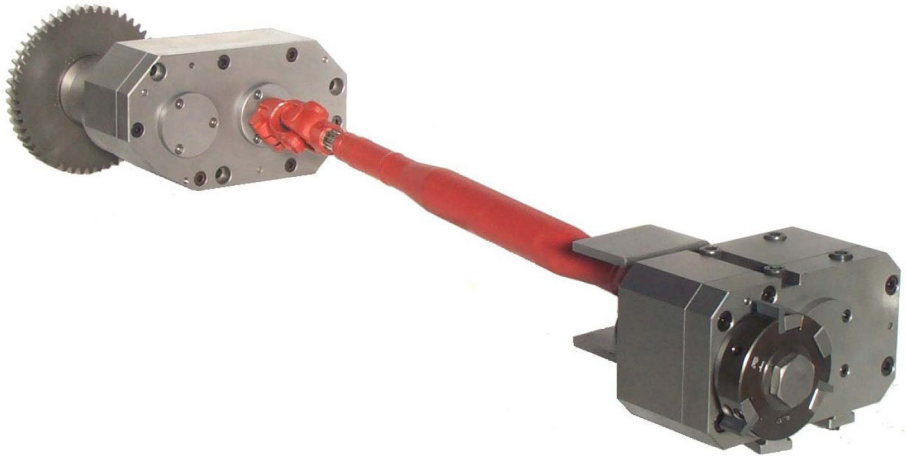
Ref. 362-856.00



- With this kind of tap-holder you can set exactly the length of the thread before doing the job.
- Even if the forwarding speed is still on, after having reached the pre-set length, the tap-holder will start to rotate free. **It is indispensable when you have two tapping operation on the same machine. In that case**
- While the original works with several tap-holder for different size taps, we have designed a tool-holder for collets type ER32, that can hold from 4 to 200mm taps.
- Die-holder are also available.



POLYGON GENERATING ATTACHMENT



This attachment is designed to create polygons on the external surface of the component. The tool rotates twice quicker than the component with the same direction.

For this reason the number of flats made on the component are always twice the number of cutters on the tool.

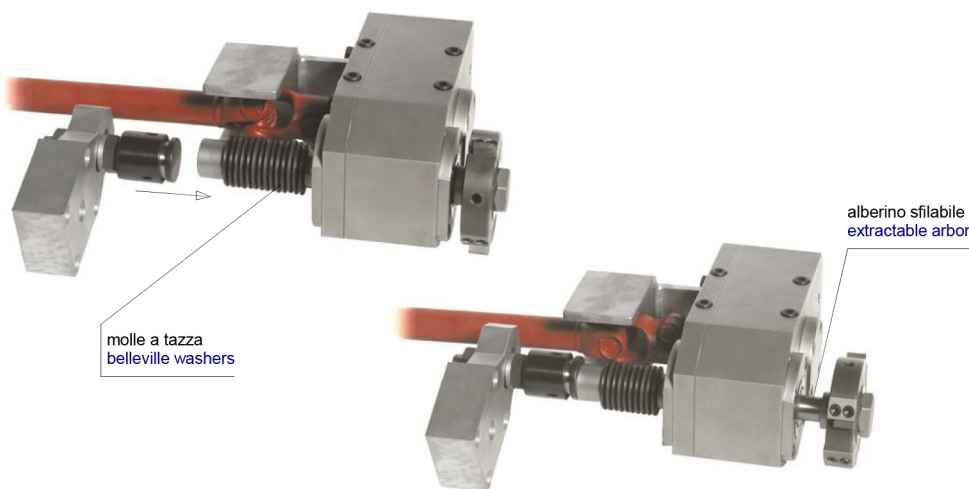
We can also supply cutter tools for polygon generating options. As you can see in the bottom picture, they have the possibility to hold 1 cutter (= 2 flats at 180 degrees) or 2 cutters at 180 degrees (= square) or 3 cutters at 120 degrees (= hexagon). We can supply different sizes of cutters that need to be grinded by the customer.



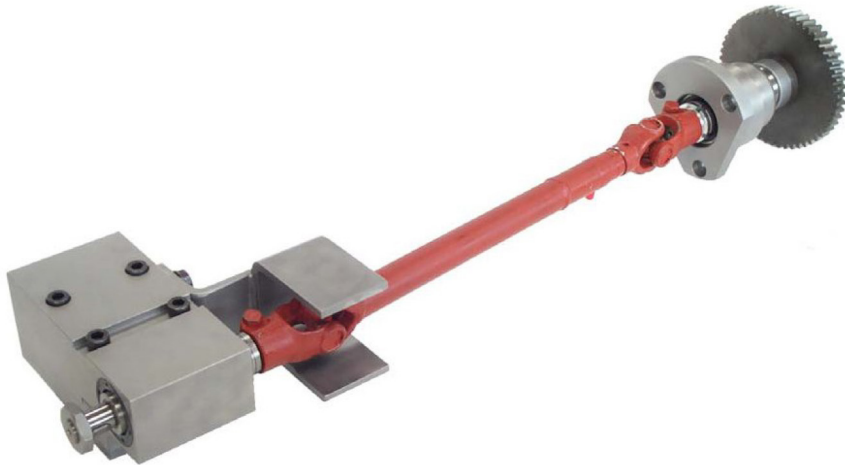
POLYGON-GENERATING ATTACHMENT WITH LONGITUDINAL MOVEMENT



This attachment has got an extractable tool-arbor in the cross slide head. The tool-arbor back end is outside the head, so it can be pushed forward by a bracket fixed on the centre flock in the same station. A set of belleville washers will pull the arbor into starting position at the end of the cycle. This kind of attachment is very good for long polygon jobs and even better for hard jobs on steel materials. In this case we suggest to use special tools with standard inserts. Please note that using this attachment can avoid buying very expensive compound slides.



THREAD MILLING ATTACHMENT



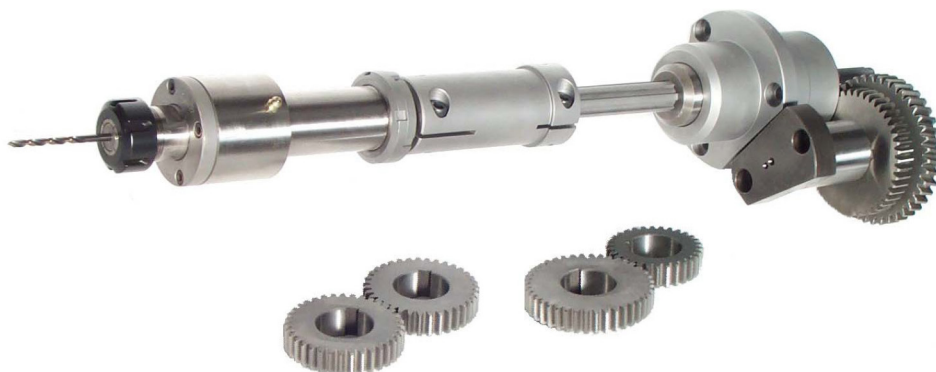
- This attachment is designed to create external threads on the component.
- The tool (that we do not supply) rotates at the same speed and direction of the bar.
- We also can supply smaller drill-holders (bottom picture) in order to make drilling operations in the same station where you are fitting the attachment.



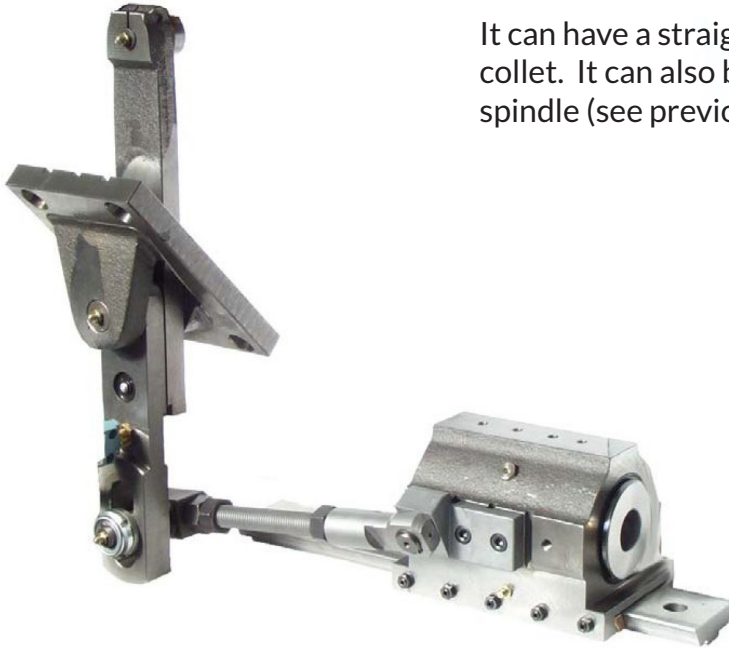
HIGH SPEED DRILLING ATTACHMENT

The High Speed Drilling Attachment is usually supplied with ER type collets and with different couples of ration gears.

It is now available in the coolant fed version: the coolant liquid can be pushed through the tool at high pressure during the drilling operation.



INDEPENDENT DRILL HOLDER

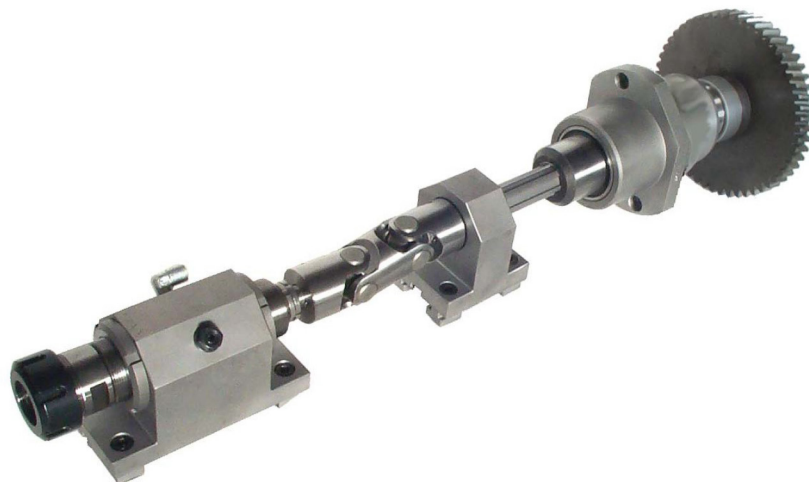


It can have a straight bore to hold directly the drill, or have a ER collet. It can also be made suitable for holding a rotating drilling spindle (see previous page).

BROACHING ATTACHMENT

This attachment is designed to create polygons or geometrical profiles inside the component. It has to be fitted on the center block of the machine (longitudinal side). The tool rotates at the same speed as the bar. The standard tool-spindle uses ER type collets.

The tool spindle has a slight inclination versus the axis of the component in order to reduce the axial load during the broaching operation.



RAMP RECESSING ATTACHMENT

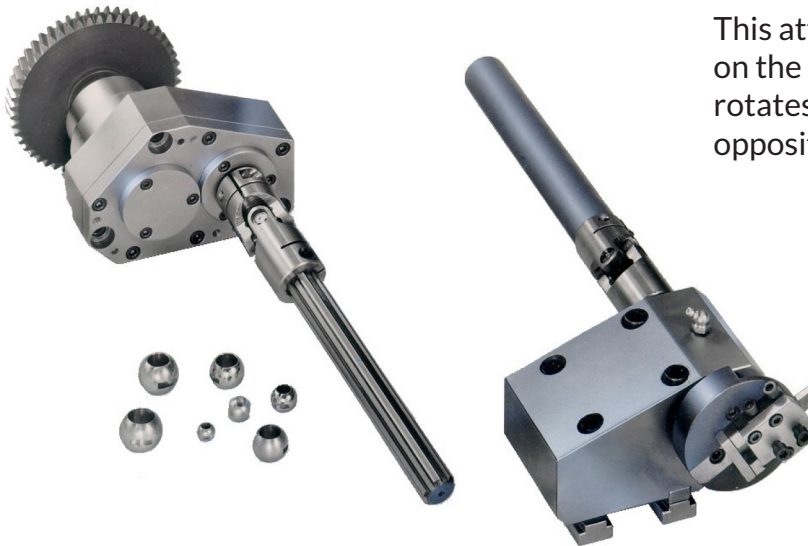
TECHNICAL DATA:

- 14 degree ramp (or other inclinations on demand)
- Tool Fitting = 25 mm diameter bore (eccentric)
- Possibility of lubrication liquid through the tool
- Up and down adjustable tool holder



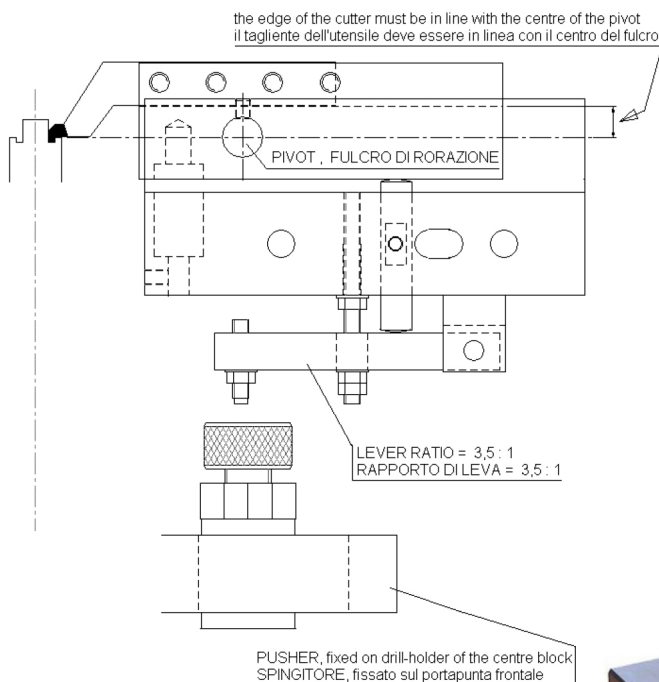
- The attachment is used to create recesses inside the component.
- It has to be located on the central block of the machine.
- After reached the right position inside the component the tool-holder moves upwards, sliding on a 14 degree ramp (that means 1 mm upwards every 4 mm of axial movement of the central block).
- The length of the recess is usually the same as the length of the cutting tool. However, if you need to create longer recesses, our attachment can also move axially while making the recess.

SPHERE CUTTING ATTACHMENT

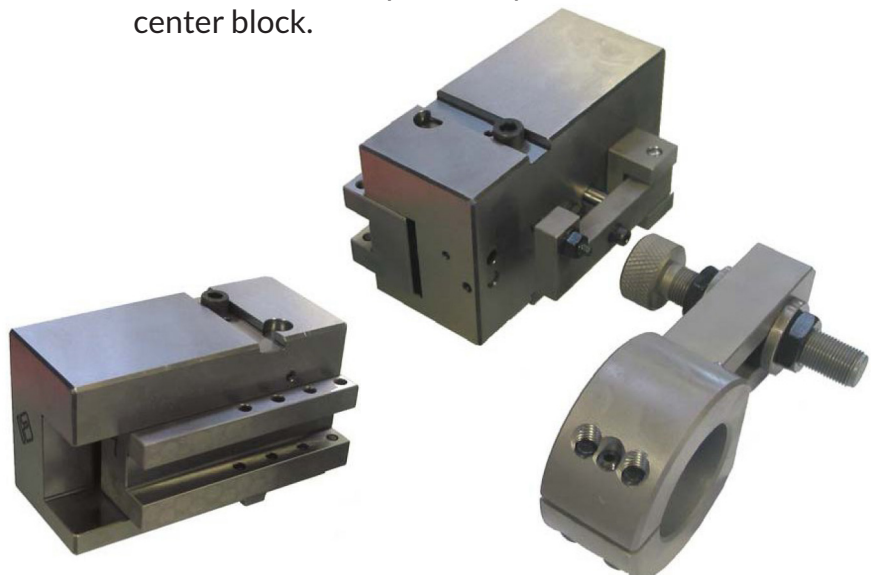


This attachment is designed to create radial slots on the external surface of the component. The tool rotates at the same speed as the component with opposite direction.

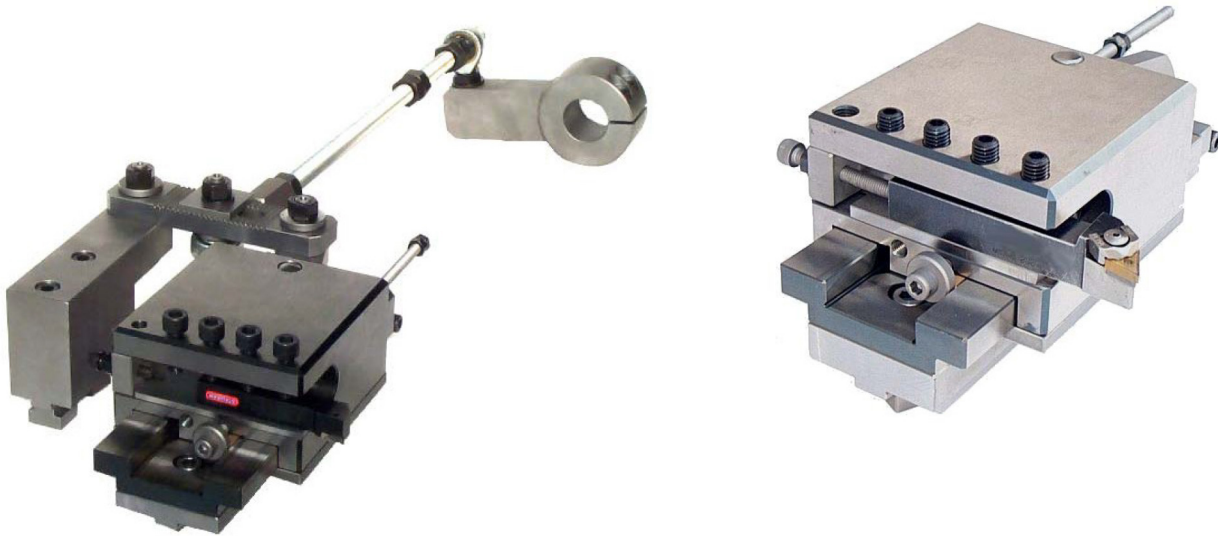
BACK GROOVING TOOL-HOLDER (ALSO FOR FRONTAL GROOVING)



- It is fixed on cross slide and it makes back or frontal grooving operations.
- The tool is not included and must be properly profiled by the customer.
- The cutter moves on a circle but, because of its distance to the pivot and its small movement inside the part, the result is like it does a straight movement.
- The tool-holder is pushed by a bracket fixed on the center block.



LONGITUDINAL TURNING CHARIOT

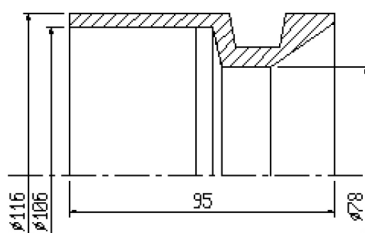
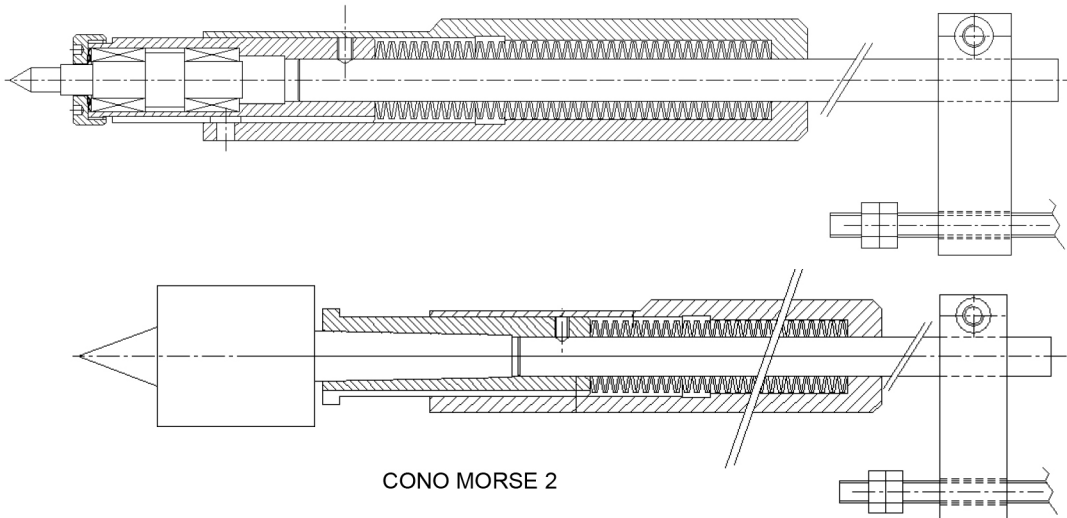


MARKING ATTACHMENT

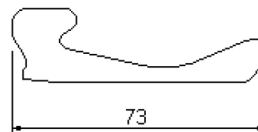
- This attachment is used for marking the components in a very simple and quick way, because it is based on a completely mechanical logic.
- The cross slide, with our attachment on, moves forward till the engraved disk touches the component.
- Because of the friction between them, the disk starts to turn and mark the component. When the engraving is over, the disk stops in a fixed position to avoid further contact with the component.
- During the return stroke a popper pin fixed on the wall of the machine resets the attachment with the disk able to turn again. We can supply blank disks only together with the instructions about how to engrave them.



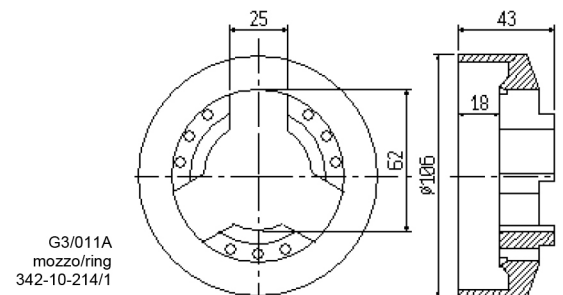
ROTATING LIVE CENTER WITH COMPENSATION



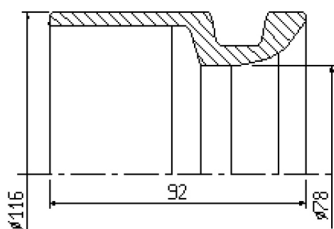
G3/001
campana/sleeve
342-10-2110/001



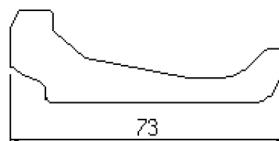
G3/004
martelletto/toggle
342-10-2130/001



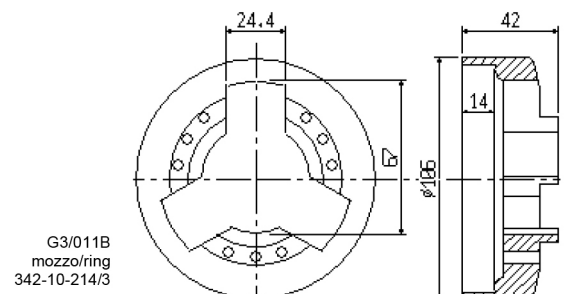
G3/011A
mozzo/ring
342-10-214/1



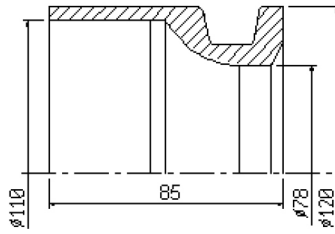
G3/002
campana/sleeve
342-10-2110/002



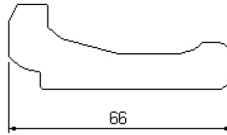
G3/005
martelletto/toggle
342-10-2130/002



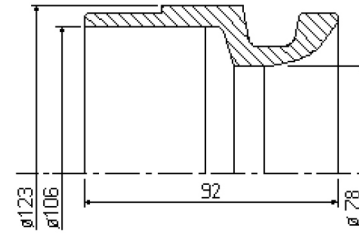
G3/011B
mozzo/ring
342-10-214/3



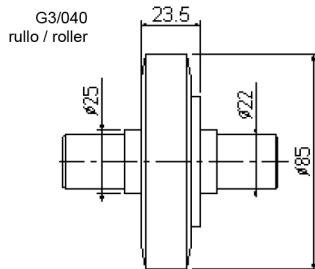
G3/003
campana/sleeve
342-10-2110/003



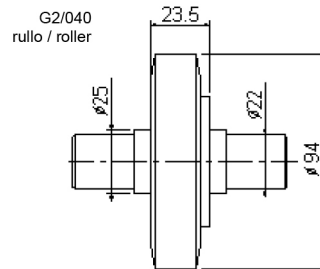
G3/006
martelletto/toggle
342-10-2130/003



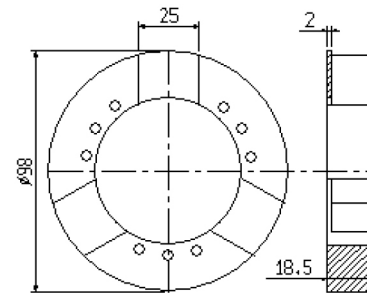
G6/001
campana/sleeve



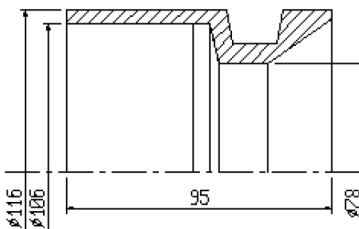
G3/040
rullo / roller



G2/040
rullo / roller



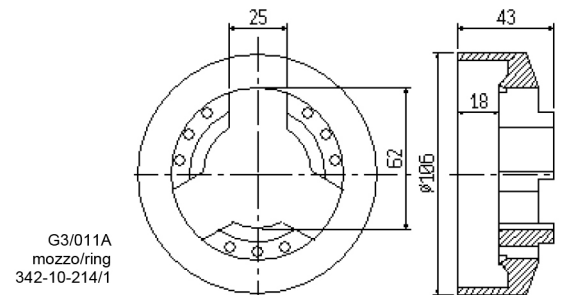
G3/018
anello / ring
342-10-215/1



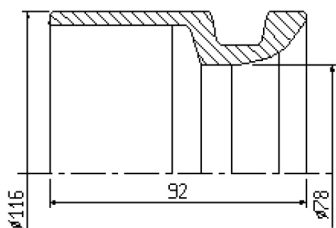
G3/001
campana/sleeve
342-10-2110/001



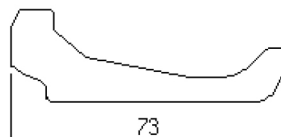
G3/004
martelletto/toggle
342-10-2130/001



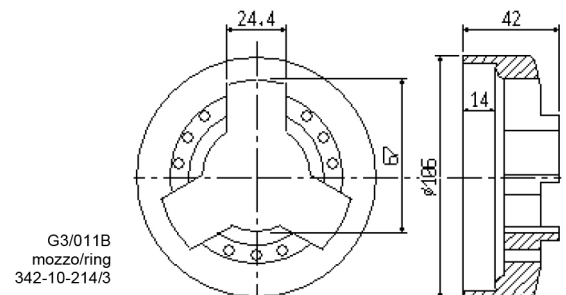
G3/011A
mozzo/ring
342-10-214/1



G3/002
campana/sleeve
342-10-2110/002



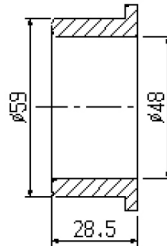
G3/005
martelletto/toggle
342-10-2130/002



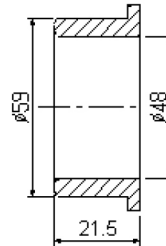
G3/011B
mozzo/ring
342-10-214/3



G3/019B
manicotto/sleeve
342-10-210/2



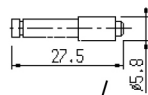
G3/007
Boccola/ring
342-10-212/2



G3/007B
Boccola/ring
342-10-212/2



G2/013
ghiera/nut
342-10-220/2



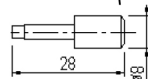
G2/016
spina/pin
342-10-225



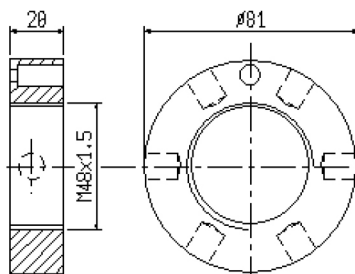
G2/014
ghiera/nut
342-10-222/2



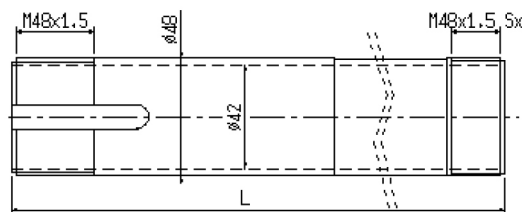
G3/090
Molla a tazza/spring
342-10-216



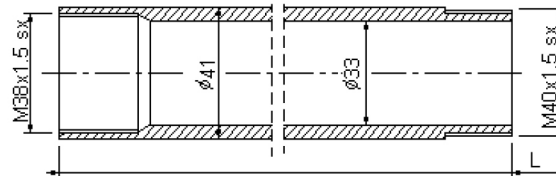
G2/017
spina/pin
342-10-228



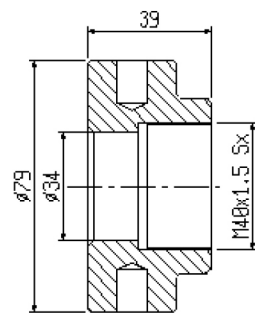
G2/009
ghiera/nut
342-10-221



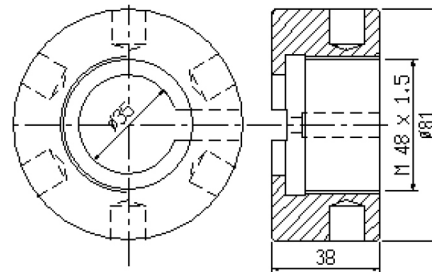
G3/010
Tubo stringibarra/collet tube



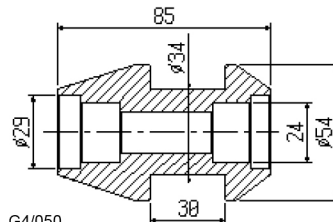
G3/012
tubo spingibarra / feed tube



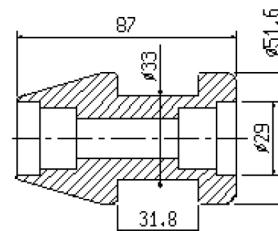
G3/016
ghiera / nut



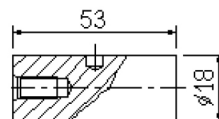
G3/015
ghiera / nut



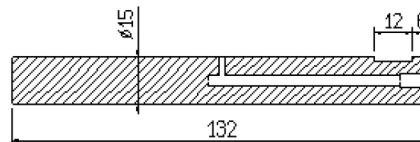
G4/050
rullo/roller



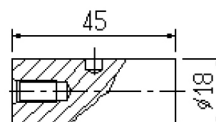
G3/050
rullo/roller
343-09-1370



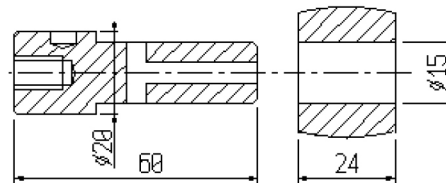
G2/031
perno / pin



G3/052
perno/pin

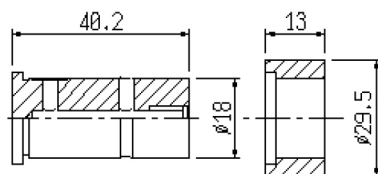


G2/030
perno / pin



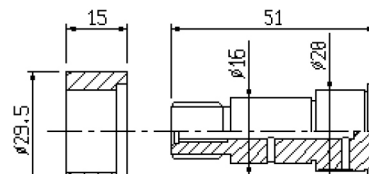
G3/037P
perno / pin

G3/037R
rullo / roller



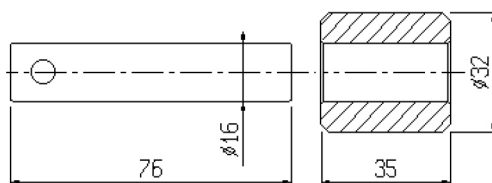
G3/031P
perno / pin

G3/031R
rullo / roller



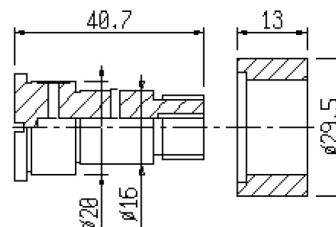
G3/032R
rullo / roller

G3/031P
perno / pin



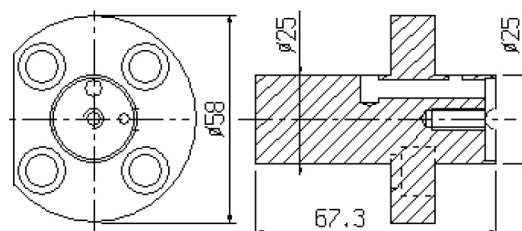
G3/038P
perno / pin

G3/038R
rullo / roller

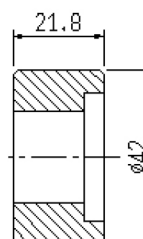


G3/030R
rullo / roller

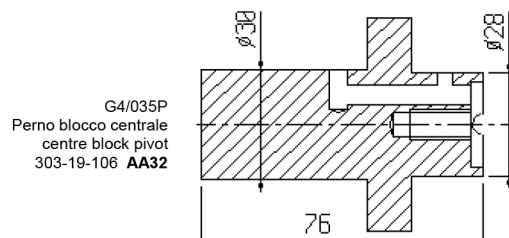
G3/030P
perno / pin



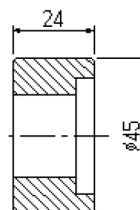
G3/033P
Perno blocco centrale / centre block pivot
302-19-106 **AS32**



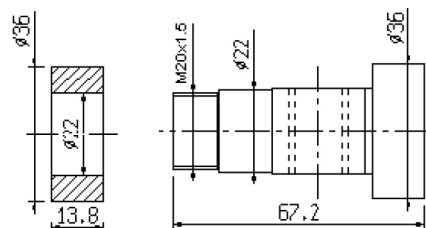
G3/033R
rullo / roller
302-19-107



G4/035P
Perno blocco centrale
centre block pivot
303-19-106 **AA32**



G4/035R
rullo / roller
303-19-107

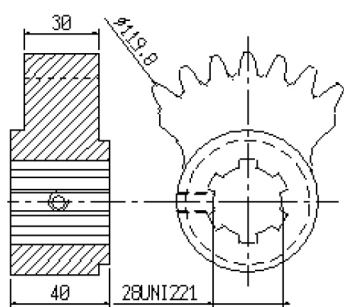


G5/039R
rullo / roller

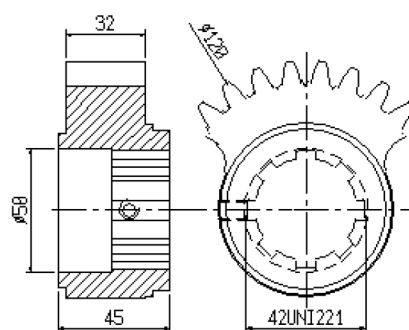
G5/039P
perno / pin



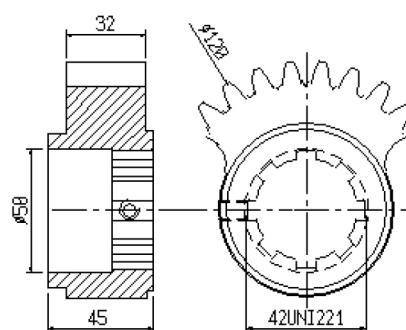
G5/039
303-08-1380/001



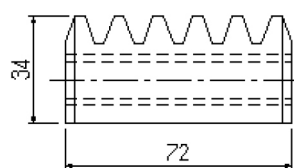
G3/020 pos. 3-4-5-6
settole dentato / sector gear
302-08-1230



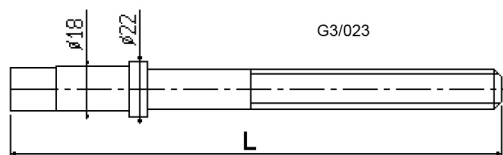
G3/021 pos. 1
settole dentato / sector gear
303-08-601



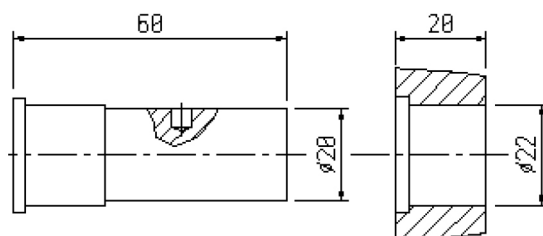
G3/024 pos. 2
settole dentato / sector gear
302-08-6040



G3/022
Cremagliera / gear
303-25-129



G3/023



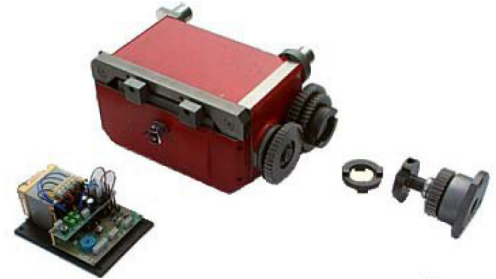
G4/033P
perno / pin

G4/033R
rullo / roller

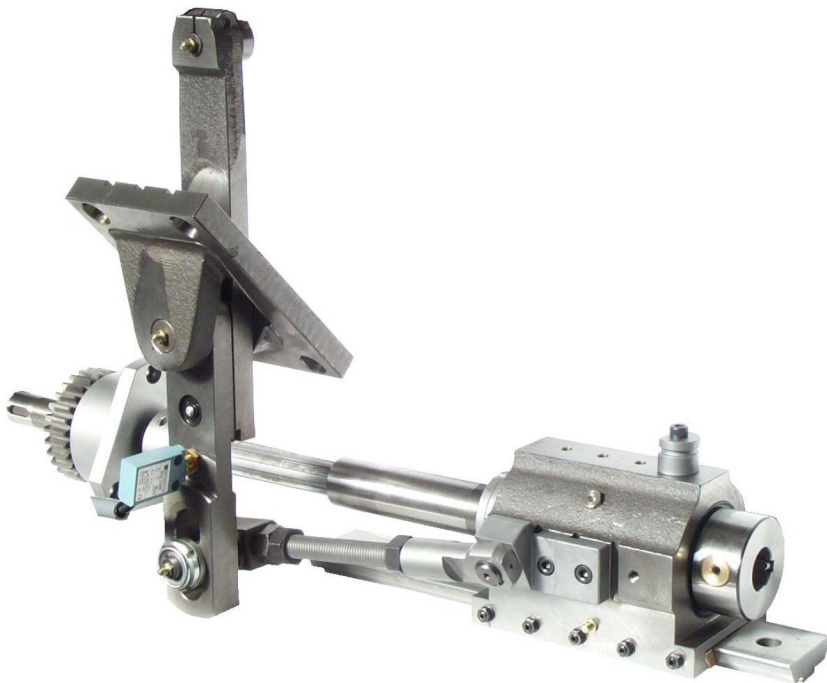


Coppie ruote rapporti velocità/tempi
Pairs of feed and speed gears

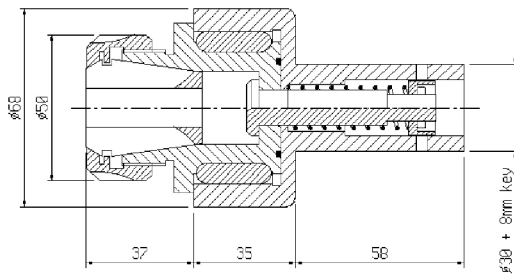
FULL THREADING ATTACHMENT



- We can supply the entire attachment as shown by the picture.
- Our attachment is based on electromagnetic clutches.
- All gears and shafts are hardened and grinded.
- The mechanical parts are supplied fitted together.
- The 2 electromagnetic clutches are piloted by our Power Unit.
- We also supply the lever pushing set complete with the cam.
- The microswitch set on the lever stops the machine in case breakdown of the lever caused by the threading spindle when the tap stacks in the component.



TAPPING ACCESSORIES TURLO'S TAP HOLDER WITH EXTRACTION

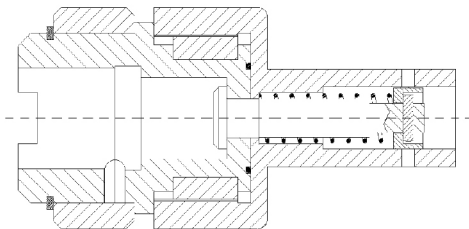


ER32 = 4mm-20mm

TURLO'S DIE HOLDER WITH EXTRACTION



tap holder with Bilz quick-change adaptor size2

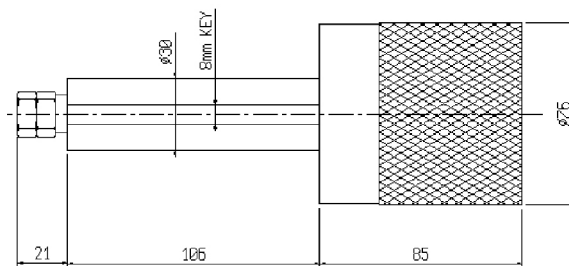


TAPPING ACCESSORIES ORIGINAL TAP OR DIE HOLDER WITH RELEASE

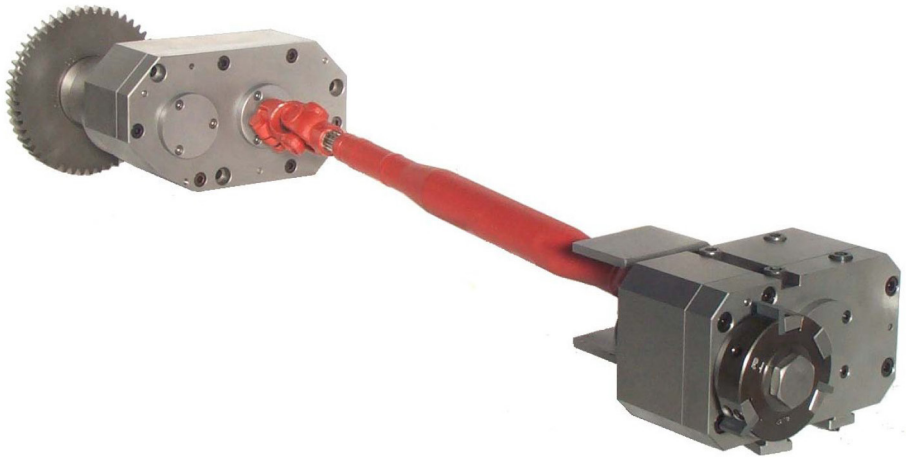
Ref. 362-856.00



- With this kind of tap-holder you can set exactly the length of the thread before doing the job.
- Even if the forwarding speed is still on, after having reached the pre-set length, the tap-holder will start to rotate free. **It is indispensable when you have two tapping operation on the same machine. In that case**
- While the original works with several tap-holder for different size taps, we have designed a tool-holder for collets type ER32, that can hold from 4 to 200mm taps.
- Die-holder are also available.



POLYGON-GENERATING ATTACHMENT



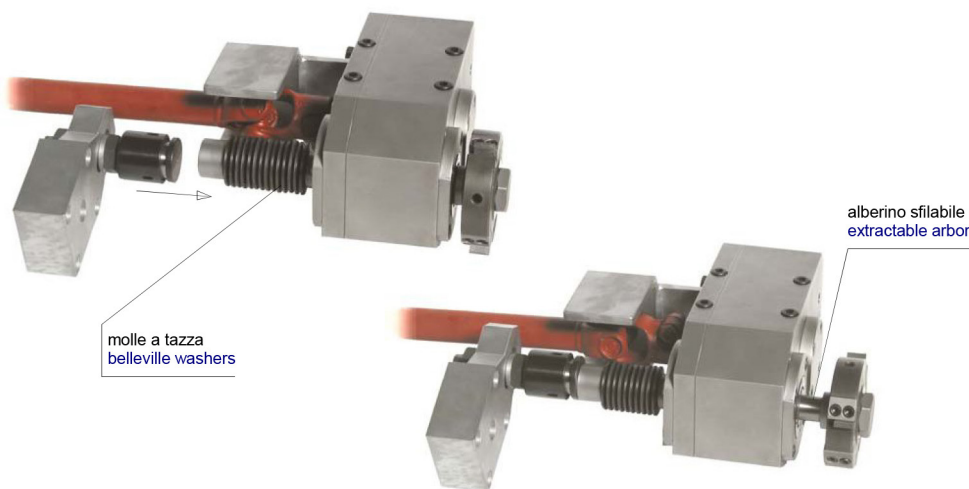
- This attachment is designed to create polygons on the external surface of the component.
- The tool rotates twice quicker than the component with the same direction.
- For this reason the number of flats made on the component are always twice the number of cutters on the tool.
- We can also supply cutter tools for polygon generating options. As you can see in the bottom picture, they have the possibility to hold 1 cutter (= 2 flats at 180 degrees) or 2 cutters at 180 degrees (= square) or 3 cutters at 120 degrees (= hexagon). We can supply different sizes of cutters that need to be grinded by the customer.



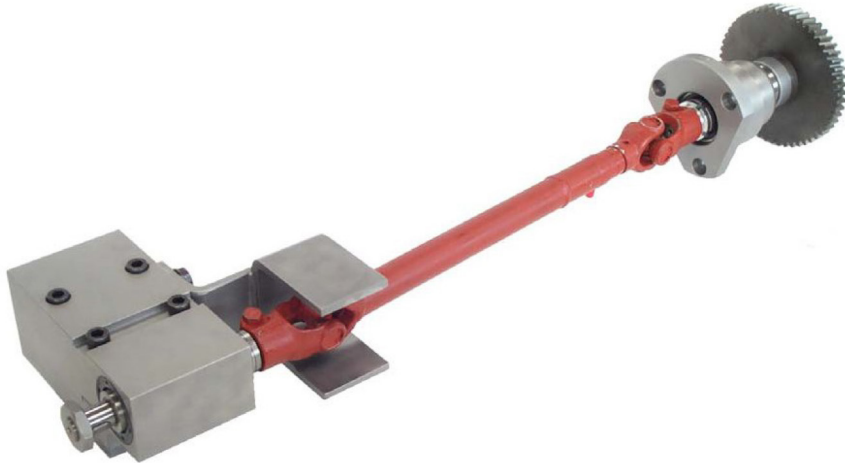
POLYGON-GENERATING ATTACHMENT WITH LONGITUDINAL MOVEMENT



This attachment has got an extractable tool-arbor in the cross slide head. The tool-arbor back end is outside the head, so it can be pushed forward by a bracket fixed on the centre flock in the same station. A set of belleville washers will pull the arbor into starting position at the end of the cycle. This kind of attachment is very good for long polygon jobs and even better for hard jobs on steel materials. In this case we suggest to use special tools with standard inserts. Please note that using this attachment can avoid buying very expensive compound slides.



THREAD MILLING ATTACHMENT



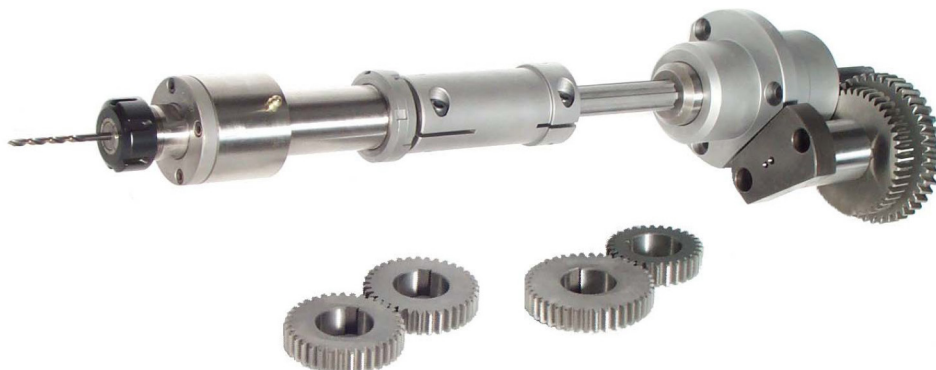
- This attachment is designed to create external threads on the component.
- The tool (that we do not supply) rotates at the same speed and direction of the bar.
- We also can supply smaller drill-holders (bottom picture) in order to make drilling operations in the same station where you are fitting the attachment.



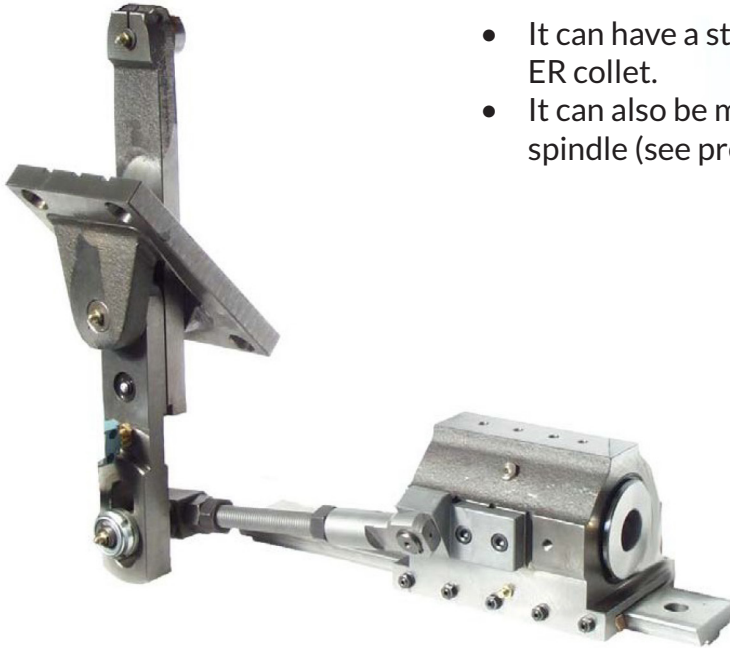
HIGH SPEED DRILLING ATTACHMENT

The High Speed Drilling Attachment is usually supplied with ER type collets and with different couples of ration gears.

It is now available in the coolant fed version: the coolant liquid can be pushed through the tool at high pressure during the drilling operation.



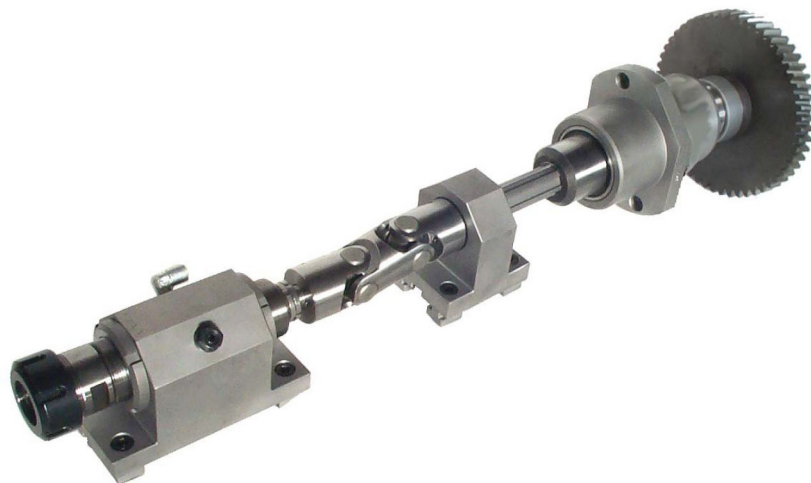
INDEPENDENT DRILL HOLDER



- It can have a straight bore to hold directly the drill, or have a ER collet.
- It can also be made suitable for holding a rotating drilling spindle (see previous page).

BROACHING ATTACHMENT

- This attachment is designed to create polygons or geometrical profiles inside the component. It has to be fitted on the center block of the machine (longitudinal side).
- The tool rotates at the same speed as the bar. The standard tool-spindle uses ER type collets.
- The tool spindle has a slight inclination versus the axis of the component in order to reduce the axial load during the broaching operation.



RAMP RECESSING ATTACHMENT

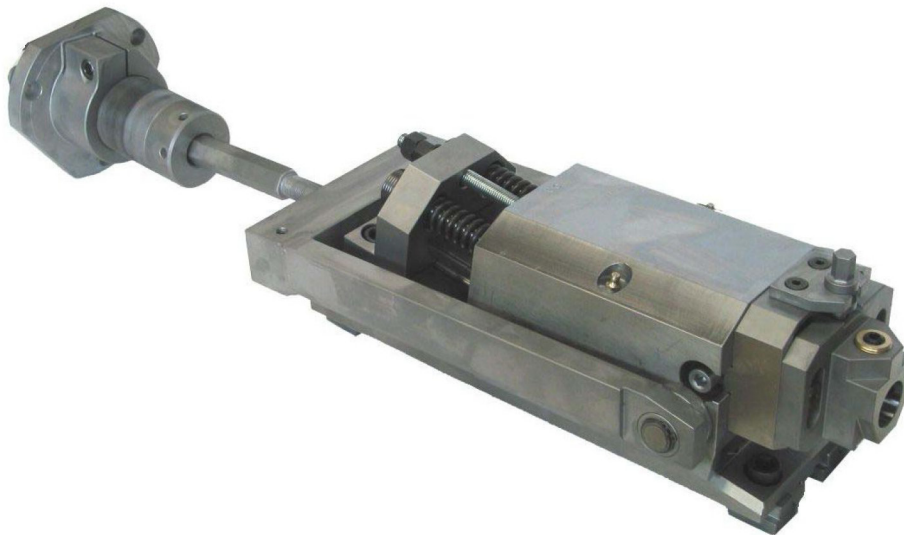
TECHNICAL DATA:

- 14 degree ramp (or other inclinations on demand)
- Tool Fitting = 25 mm diameter bore (eccentric)
- Possibility of lubrication liquid through the tool
- Up and down adjustable tool holder



- The attachment is used to create recesses inside the component.
- It has to be located on the central block of the machine.
- After reached the right position inside the component the tool-holder moves upwards, sliding on a 14 degree ramp (that means 1 mm upwards every 4 mm of axial movement of the central block).
- The length of the recess is usually the same as the length of the cutting tool. However, if you need to create longer recesses, our attachment can also move axially while making the recess.

HEAVY DUTY ORIGINAL GILDEMEISTER RAMP RECESSING ATTACHMENT

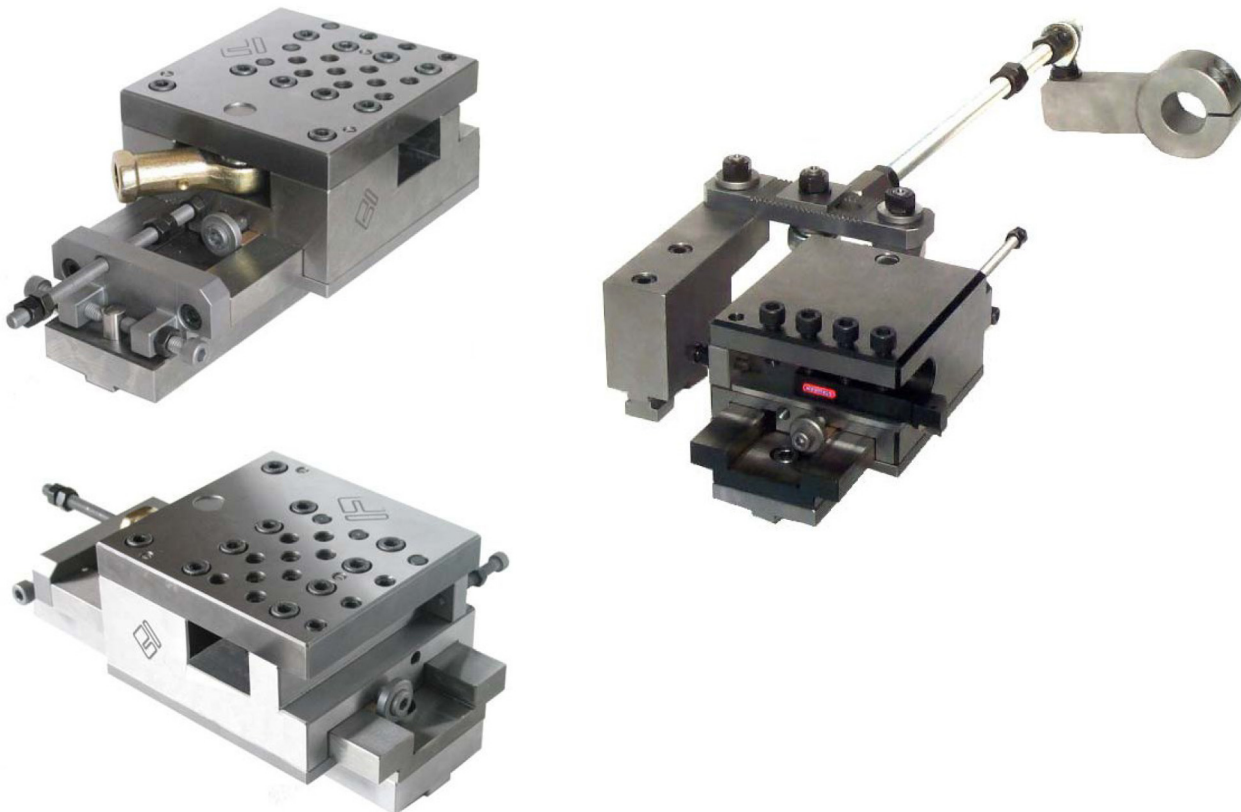


SPHERE CUTTING ATTACHMENT

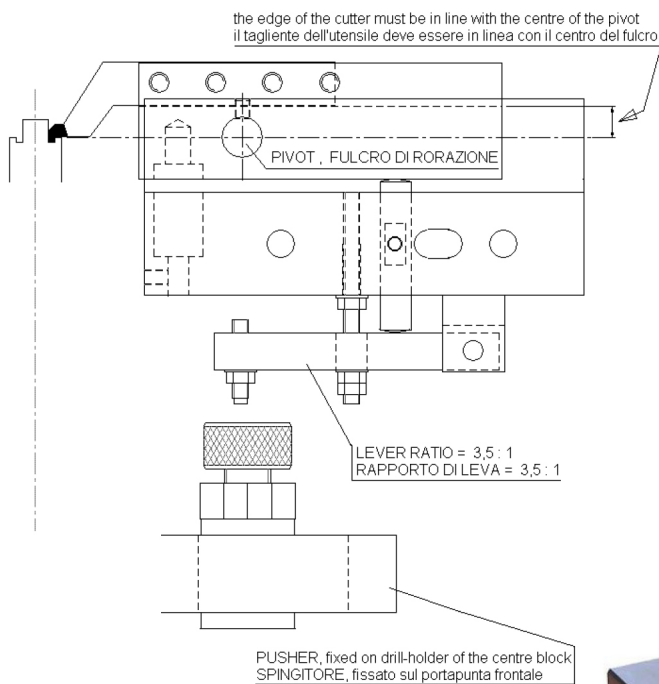


- This attachment is designed to create radial slots on the external surface of the component.
- The tool rotates at the same speed as the component with opposite direction.

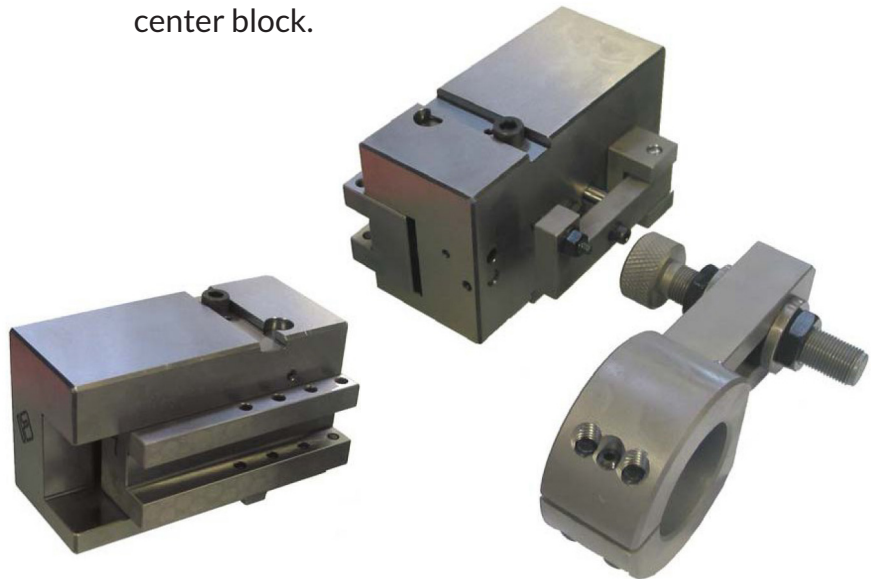
LONGITUDINAL TURNING CHARIOT



COLLET SIDE GROOVING ATTACHMENT



- It is fixed on cross slide and it makes back or frontal grooving operations.
- The tool is not included and must be properly profiled by the customer.
- The cutter moves on a circle but, because of its distance to the pivot and its small movement inside the part, the result is like it does a straight movement.
- The tool-holder is pushed by a bracket fixed on the center block.

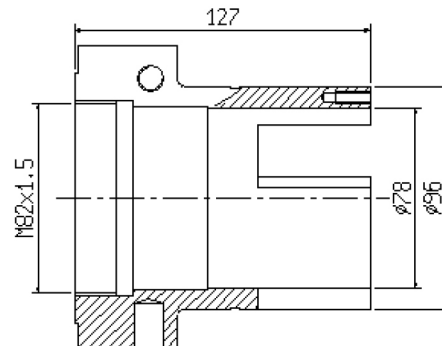
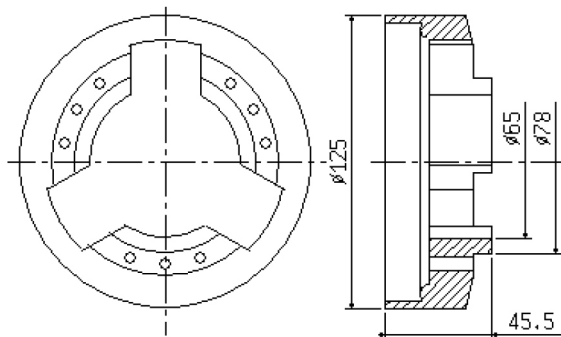
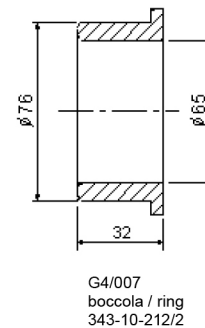
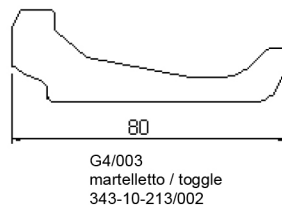
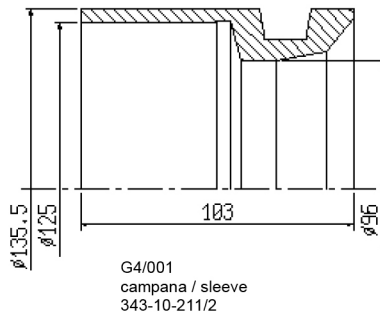
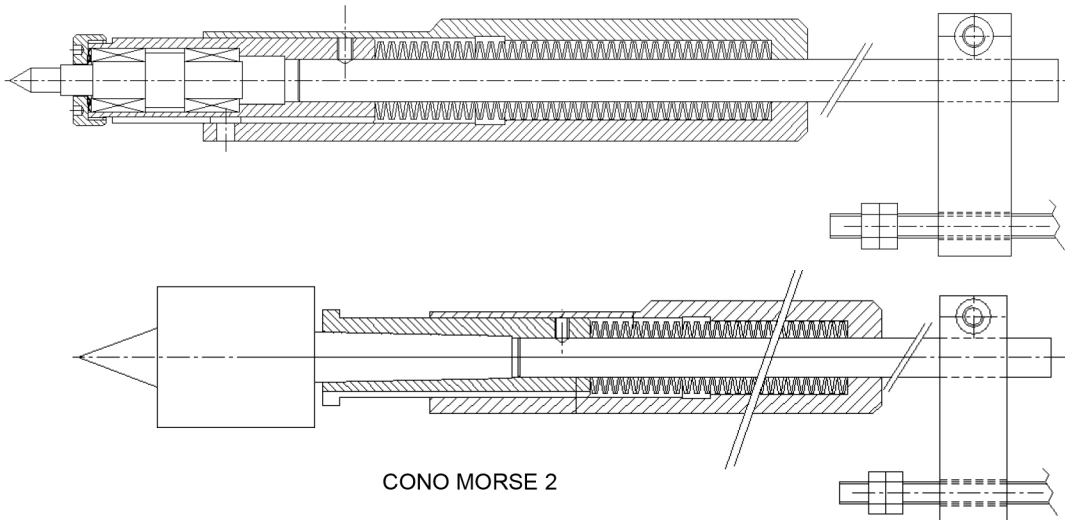


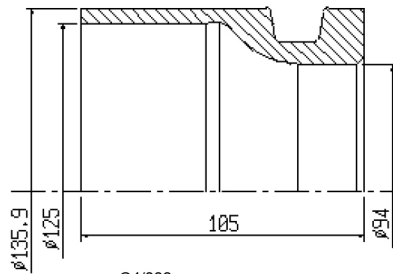
MARKING ATTACHMENT

- This attachment is used for marking the components in a very simple and quick way, because it is based on a completely mechanical logic.
- The cross slide, with our attachment on, moves forward till the engraved disk touches the component.
- Because of the friction between them, the disk starts to turn and mark the component. When the engraving is over, the disk stops in a fixed position to avoid further contact with the component.
- During the return stroke a popper pin fixed on the wall of the machine resets the attachment with the disk able to turn again. We can supply blank disks only together with the instructions about how to engrave them.

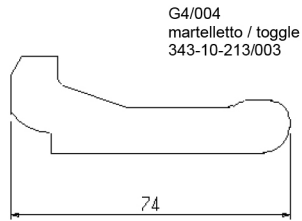


ROTATING LIVE CENTER WITH COMPENSATION

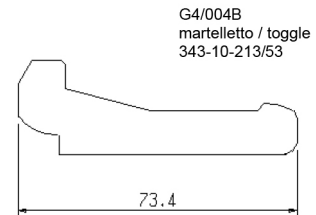




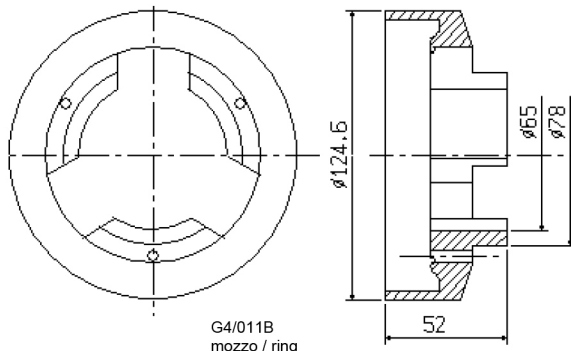
G4/002
campana / sleeve
343-10-211/53



G4/004
martelletto / toggle
343-10-213/003



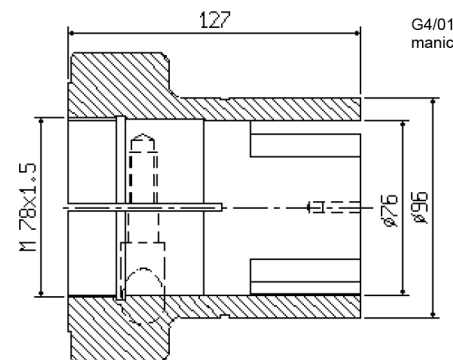
G4/004B
martelletto / toggle
343-10-213/53



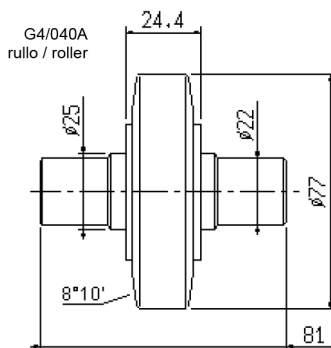
G4/011B
mozzo / ring



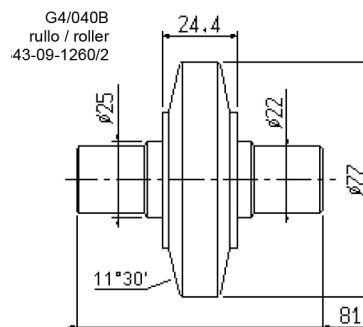
G4/005
martelletto / toggle
343-10-213/001



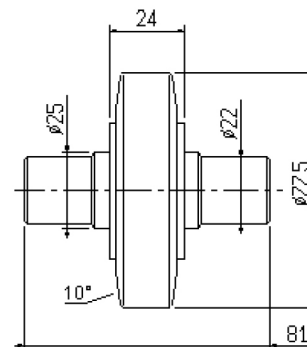
G4/019B
manicotto / sleeve



G4/040A
rullo / roller



G4/040B
rullo / roller
43-09-1260/2



G4/040C
rullo / roller



G4/013
ghiera / nut
343-10-220/2



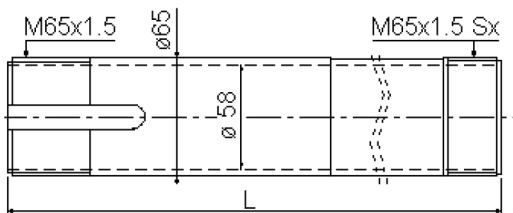
G3/014
ghiera / nut
343-10-222/2



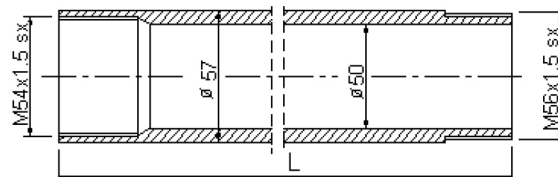
G4/090
Molla a tazza / spring
343-10-216



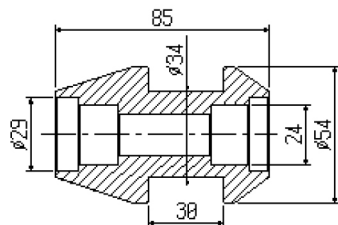
G4/009
ghiera / nut



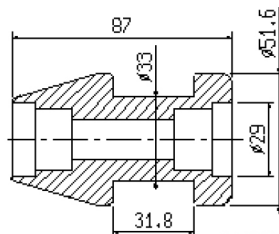
G4/010
tubo stringibarra/collet tube



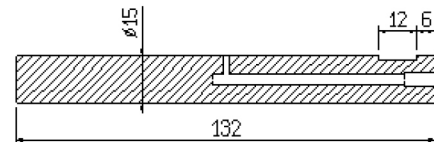
G4/012
tubo spingibarra / feed tube



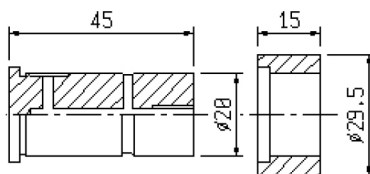
G4/050
rullo / roller



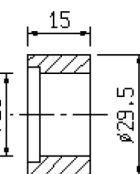
G3/050
rRullo / roller
343-09-1370



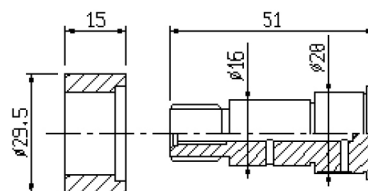
G3/052
perno / pin



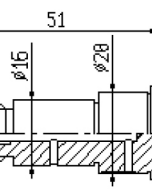
G4/031P
perno / pin



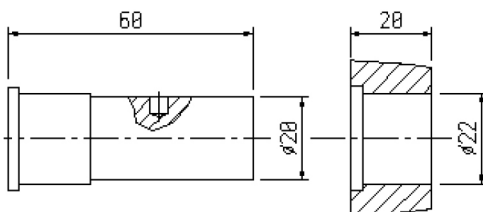
G4/031R
rullo / roller



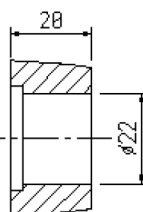
G3/032R
rullo / roller



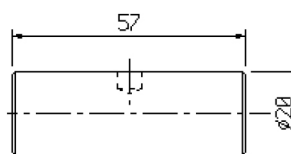
G3/032P
perno / pin



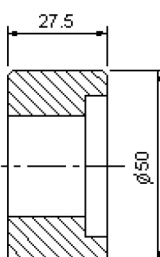
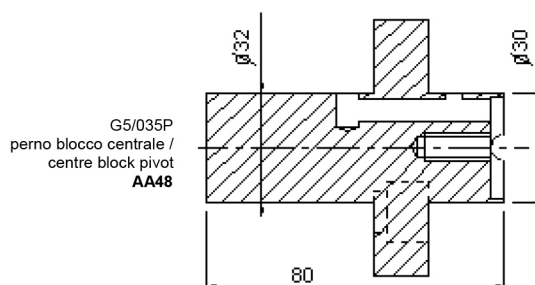
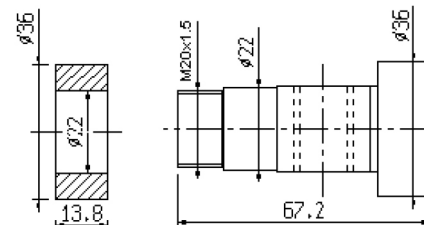
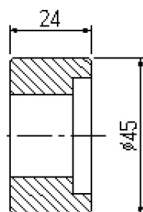
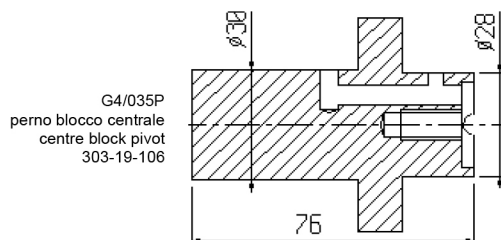
G4/033P
perno / pin



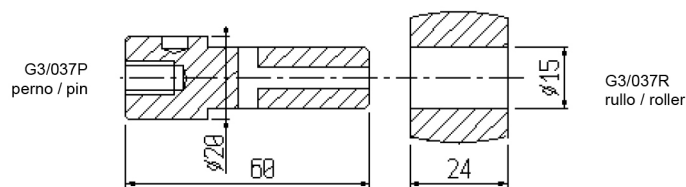
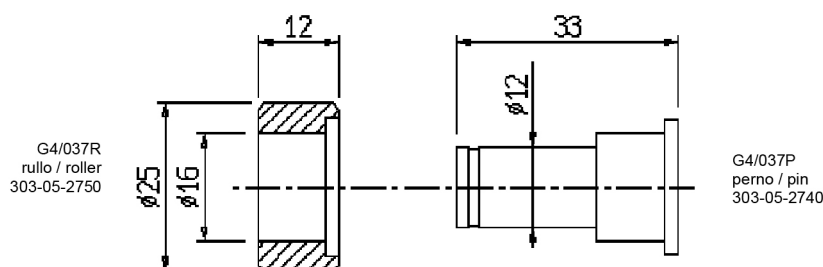
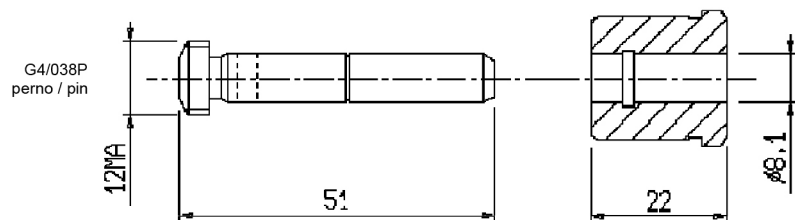
G4/033R
rullo / roller



G4/032
perno / pin



G5/039
303-08-1380/001

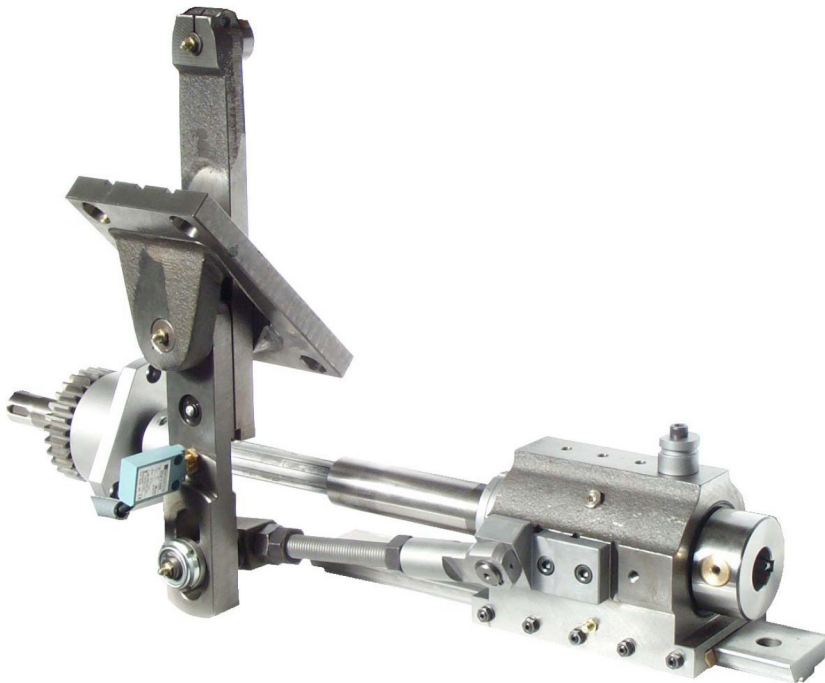


Coppie ruote rapporti velocità/tempi
Pairs of feed and speed gears

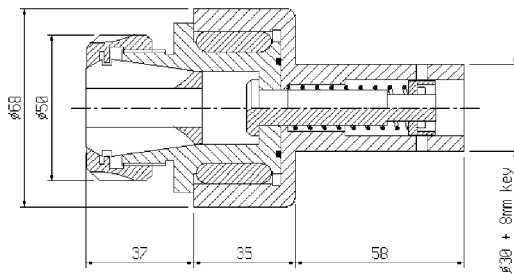
FULL THREADING ATTACHMENT



- We can supply the entire attachment as shown by the picture.
- Our attachment is based on electromagnetic clutches.
- All gears and shafts are hardened and grinded.
- The mechanical parts are supplied fitted together.
- The 2 electromagnetic clutches are piloted by our Power Unit.
- We also supply the lever pushing set complete with the cam.
- The microswitch set on the lever stops the machine in case breakdown of the lever caused by the threading spindle when the tap stacks in the component.



TAPPING ACCESSORIES TURLO'S TAP HOLDER WITH EXTRACTION

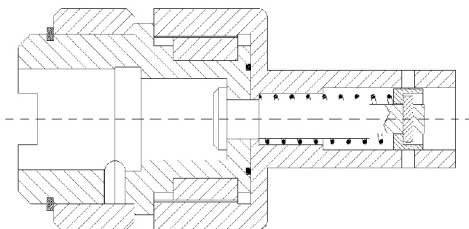


ER32 = 4mm-20mm

TURLO'S DIE HOLDER WITH EXTRACTION



tap holder with Bilz quick-change adaptor size2

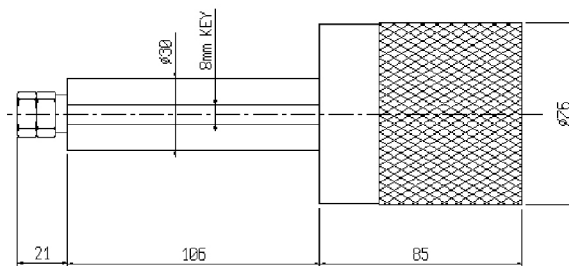


TAPPING ACCESSORIES ORIGINAL TAP OR DIE HOLDER WITH RELEASE

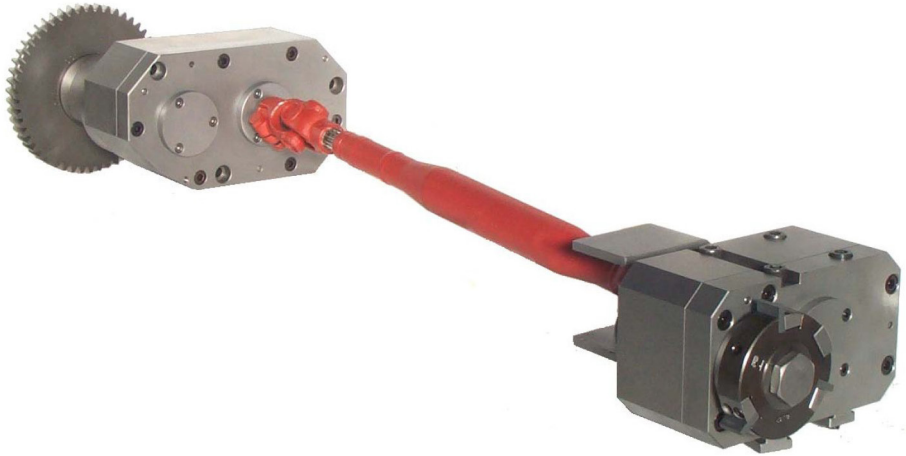
Ref. 362-856.00



- With this kind of tap-holder you can set exactly the length of the thread before doing the job.
- Even if the forwarding speed is still on, after having reached the pre-set length, the tap-holder will start to rotate free. **It is indispensable when you have two tapping operation on the same machine. In that case**
- While the original works with several tap-holder for different size taps, we have designed a tool-holder for collets type ER32, that can hold from 4 to 200mm taps.
- Die-holder are also available.



POLYGON-GENERATING ATTACHMENT



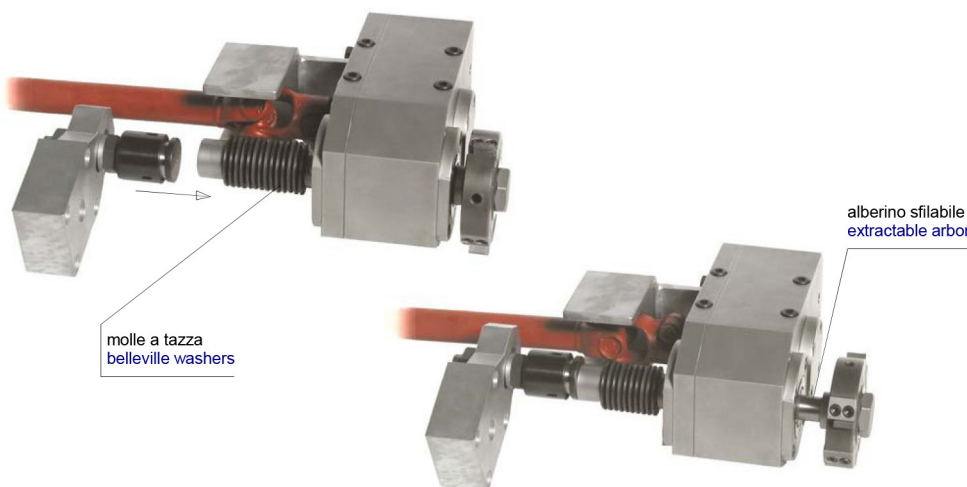
- This attachment is designed to create polygons on the external surface of the component.
- The tool rotates twice quicker than the component with the same direction.
- For this reason the number of flats made on the component are always twice the number of cutters on the tool.
- We can also supply cutter tools for polygon generating options. As you can see in the bottom picture, they have the possibility to hold 1 cutter (= 2 flats at 180 degrees) or 2 cutters at 180 degrees (= square) or 3 cutters at 120 degrees (= hexagon). We can supply different sizes of cutters that need to be grinded by the customer.



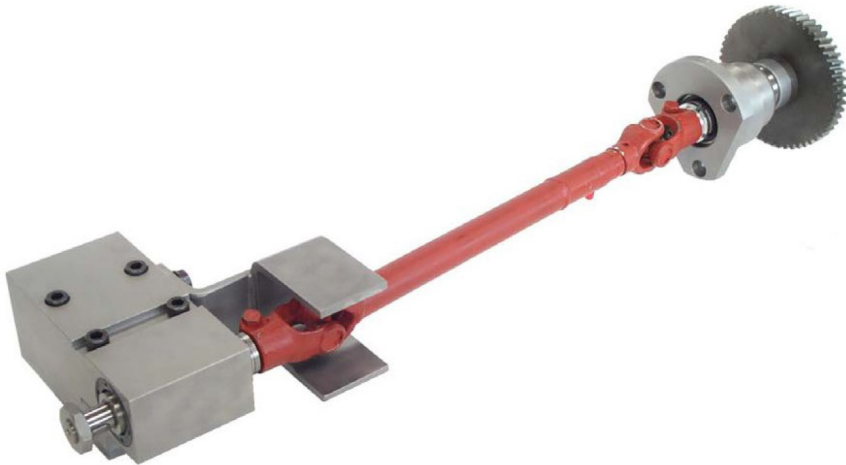
POLYGON-GENERATING ATTACHMENT WITH LONGITUDINAL MOVEMENT



This attachment has got an extractable tool-arbor in the cross slide head. The tool-arbor back end is outside the head, so it can be pushed forward by a bracket fixed on the centre flock in the same station. A set of belleville washers will pull the arbor into starting position at the end of the cycle. This kind of attachment is very good for long polygon jobs and even better for hard jobs on steel materials. In this case we suggest to use special tools with standard inserts. Please note that using this attachment can avoid buying very expensive compound slides.



THREAD MILLING ATTACHMENT



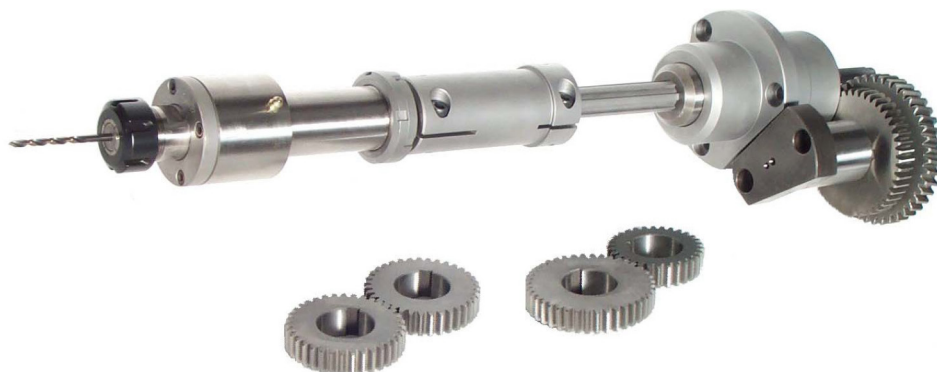
- This attachment is designed to create external threads on the component.
- The tool (that we do not supply) rotates at the same speed and direction of the bar.
- We also can supply smaller drill-holders (bottom picture) in order to make drilling operations in the same station where you are fitting the attachment.



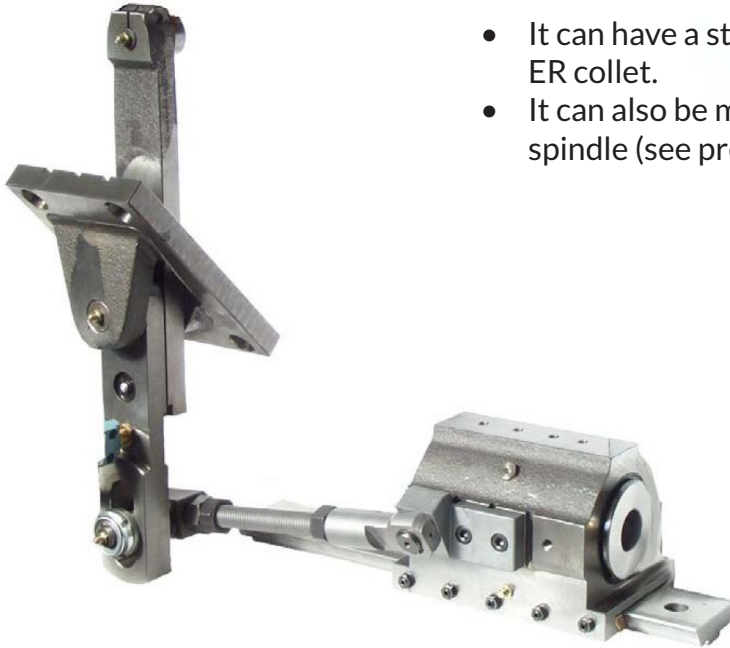
HIGH SPEED DRILLING ATTACHMENT

The High Speed Drilling Attachment is usually supplied with ER type collets and with different couples of ration gears.

It is now available in the coolant fed version: the coolant liquid can be pushed through the tool at high pressure during the drilling operation.



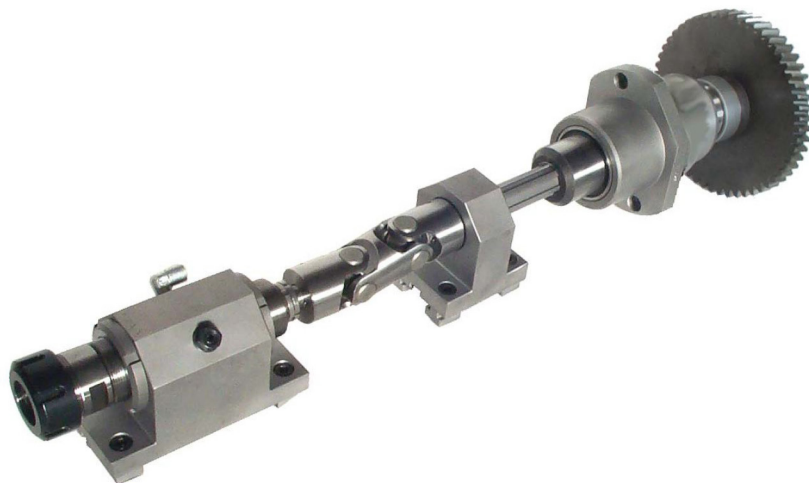
INDEPENDENT DRILL HOLDER



- It can have a straight bore to hold directly the drill, or have a ER collet.
- It can also be made suitable for holding a rotating drilling spindle (see previous page).

BROACHING ATTACHMENT

- This attachment is designed to create polygons or geometrical profiles inside the component. It has to be fitted on the center block of the machine (longitudinal side).
- The tool rotates at the same speed as the bar. The standard tool-spindle uses ER type collets.
- The tool spindle has a slight inclination versus the axis of the component in order to reduce the axial load during the broaching operation.



RAMP RECESSING ATTACHMENT

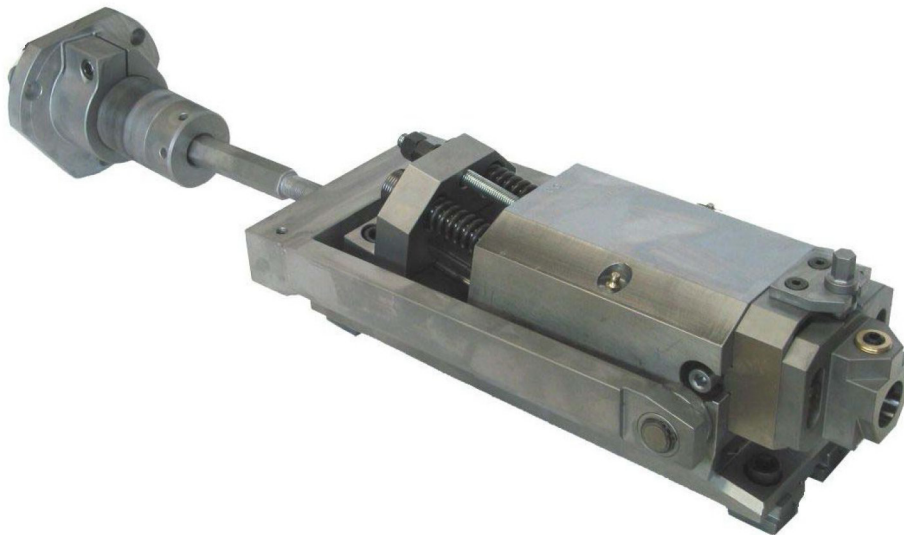
TECHNICAL DATA:

- 14 degree ramp (or other inclinations on demand)
- Tool Fitting = 25 mm diameter bore (eccentric)
- Possibility of lubrication liquid through the tool
- Up and down adjustable tool holder



- The attachment is used to create recesses inside the component.
- It has to be located on the central block of the machine.
- After reached the right position inside the component the tool-holder moves upwards, sliding on a 14 degree ramp (that means 1 mm upwards every 4 mm of axial movement of the central block).
- The length of the recess is usually the same as the length of the cutting tool. However, if you need to create longer recesses, our attachment can also move axially while making the recess.

HEAVY DUTY ORIGINAL GILDEMEISTER RAMP RECESSING ATTACHMENT

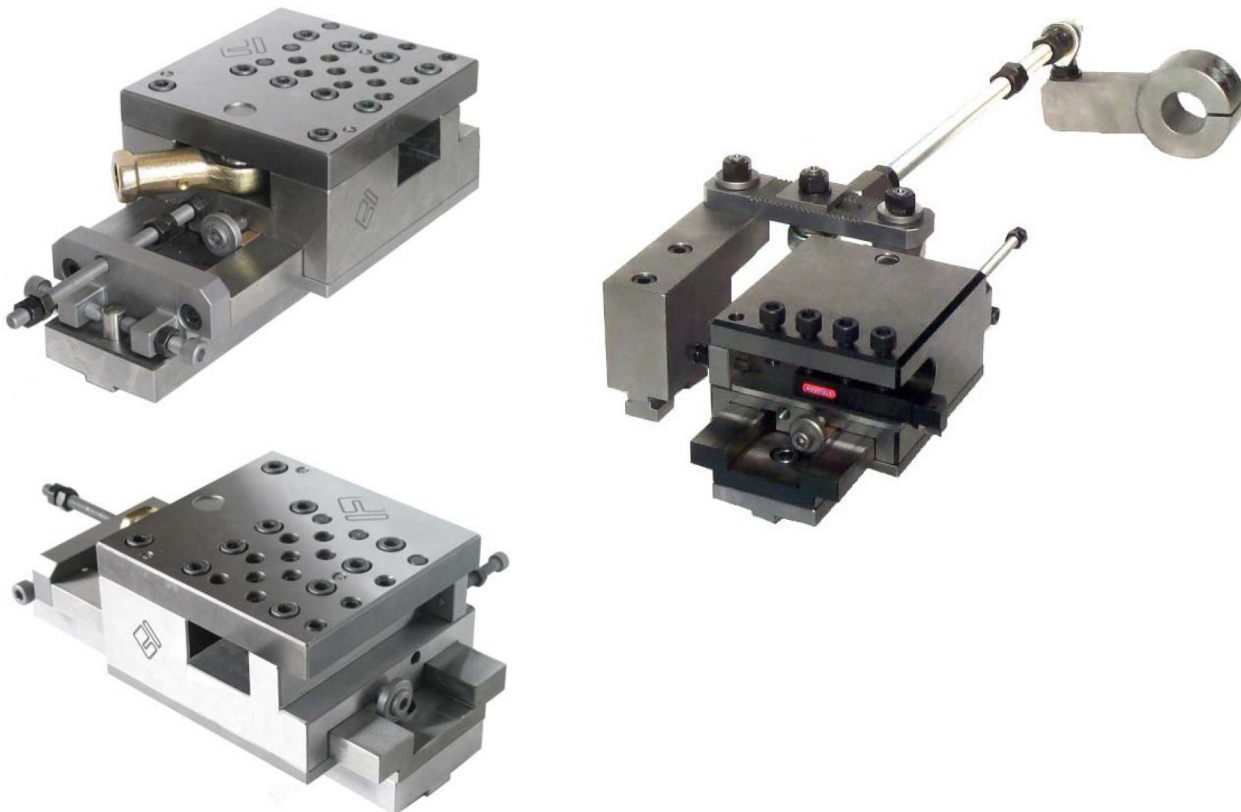


SPHERE CUTTING ATTACHMENT

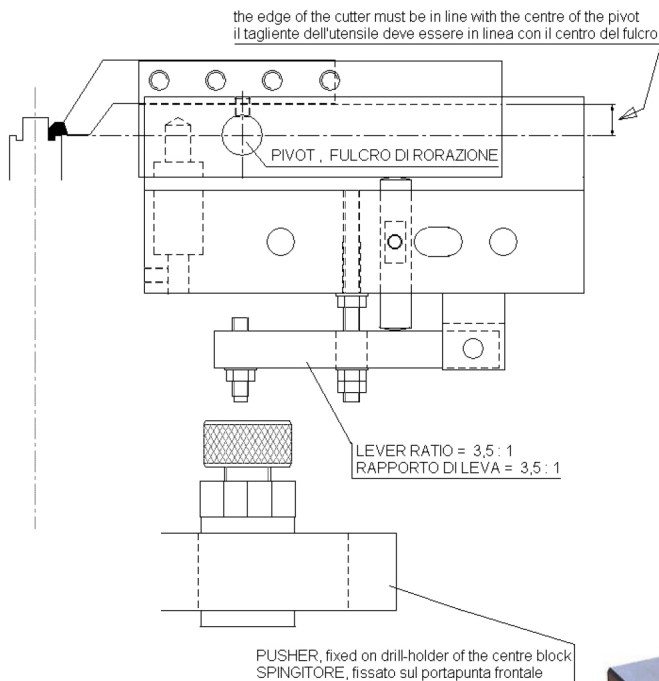


- This attachment is designed to create radial slots on the external surface of the component.
- The tool rotates at the same speed as the component with opposite direction.

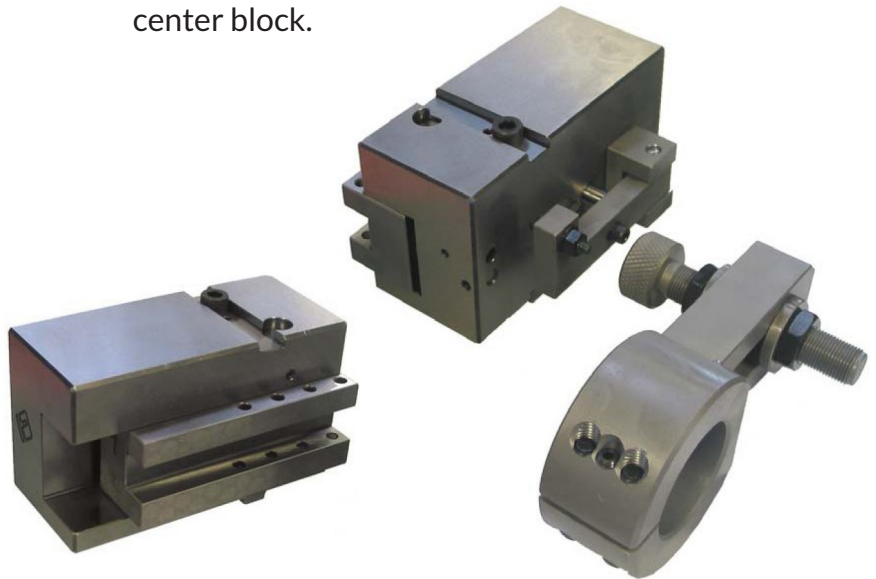
LONGITUDINAL TURNING CHARIOT



COLLET SIDE GROOVING ATTACHMENT



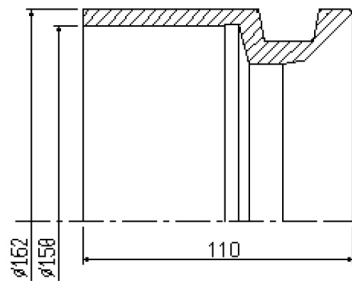
- It is fixed on cross slide and it makes back or frontal grooving operations.
- The tool is not included and must be properly profiled by the customer.
- The cutter moves on a circle but, because of its distance to the pivot and its small movement inside the part, the result is like it does a straight movement.
- The tool-holder is pushed by a bracket fixed on the center block.



MARKING ATTACHMENT

- This attachment is used for marking the components in a very simple and quick way, because it is based on a completely mechanical logic.
- The cross slide, with our attachment on, moves forward till the engraved disk touches the component.
- Because of the friction between them, the disk starts to turn and mark the component. When the engraving is over, the disk stops in a fixed position to avoid further contact with the component.
- During the return stroke a popper pin fixed on the wall of the machine resets the attachment with the disk able to turn again. We can supply blank disks only together with the instructions about how to engrave them.



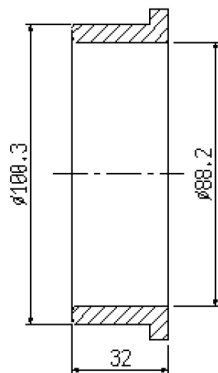


G5/003
campana / sleeve

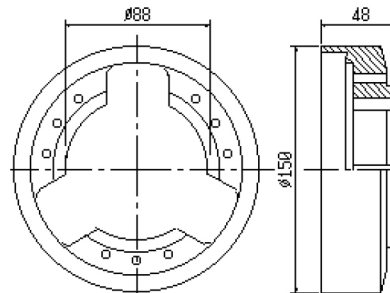


G5/005
martelletto / toggle
355-10-213/001

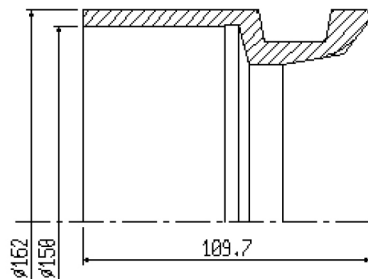
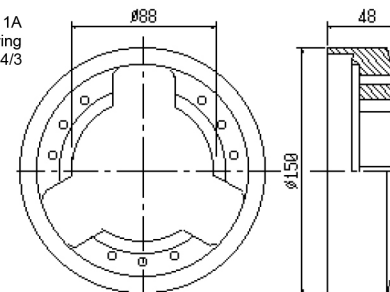
G5/007
boccola / ring



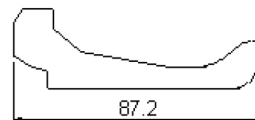
G5/011B
mozzo / ring
355-10-214-1



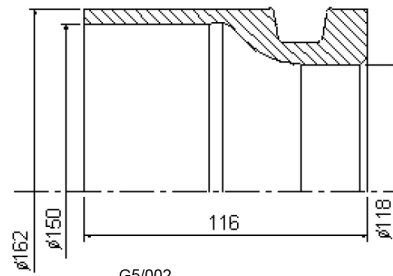
G5/011A
mozzo / ring
355-10-214/3



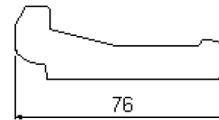
G5/001
campana / sleeve
355-10-211



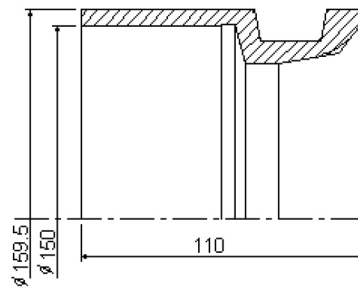
G5/003
martelletto / toggle
355-10-213/2



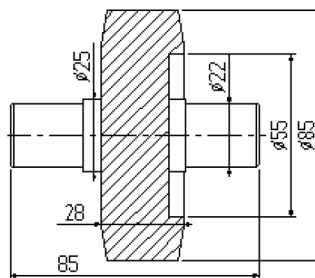
G5/002
campana / sleeve
355-10-2110/051



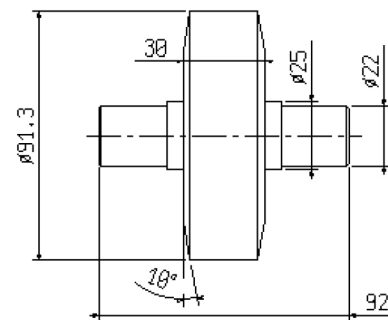
G5/004
martelletto / toggle
355-10-2130/051



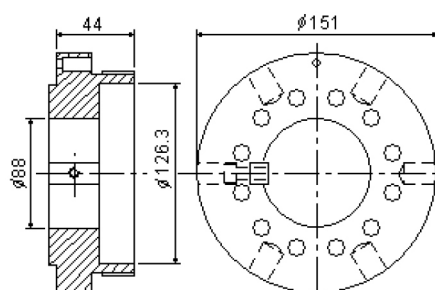
G5/001B
campana / sleeve



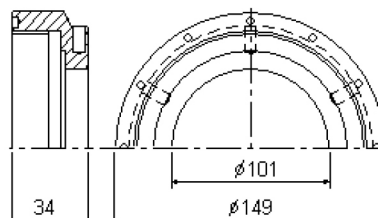
G5/040
rullo / roller



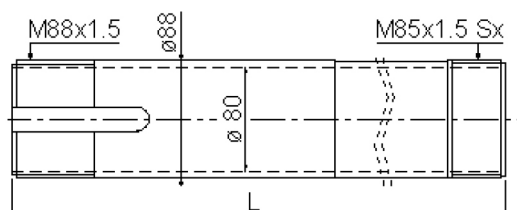
G5/040B
rullo / roller



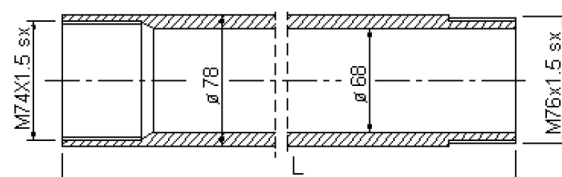
G5/013
ghiera / nut
355-10-220/2



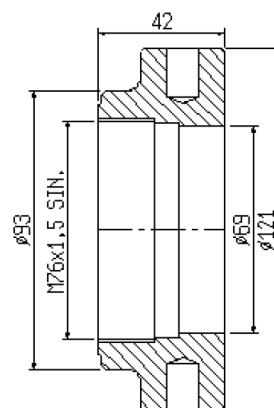
G5/014
ghiera / nut
344-10-224/2



G5/010
tubo stringibarra / collet tube



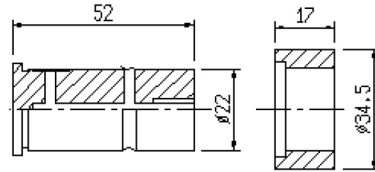
G5/012
tubo spingibarra / feed tube



G5/015
ghiera / nut

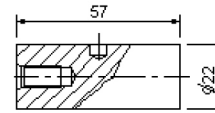


Coppie ruote rapporti velocità/tempi
Pairs of feed and speed gears

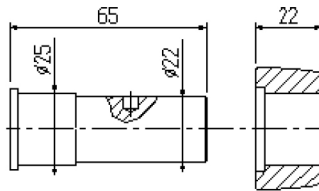


G5/031P
perno / pin
304-08-141/1

G5/031R
rullo / roller
304-08-142/1

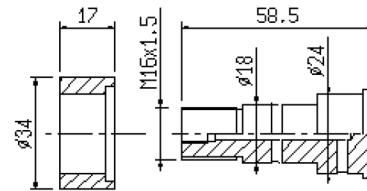


G5/034
perno / pin



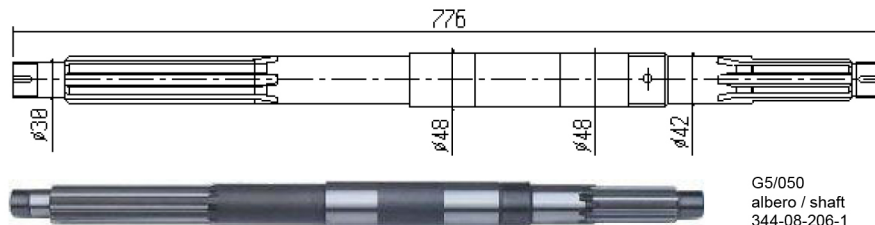
G5/033P
perno / pin
304-09-140

G5/033R
rullo / roller
304-09-141

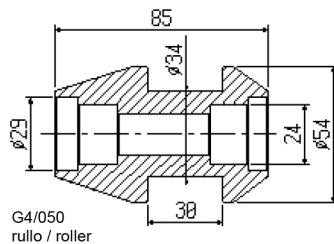


G5/030R
rullo / roller

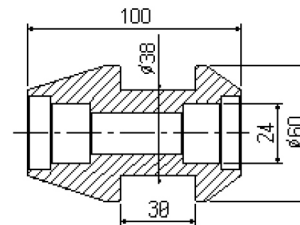
G5/030P
perno / pin



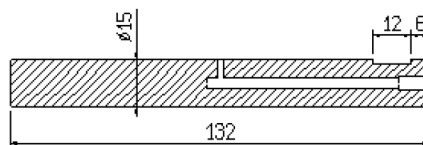
G5/050
albero / shaft
344-08-206-1



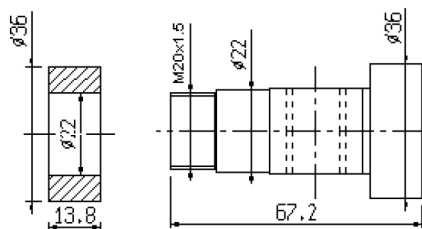
G4/050
rullo / roller



G5/051
rullo / roller



G3/052
perno / pin

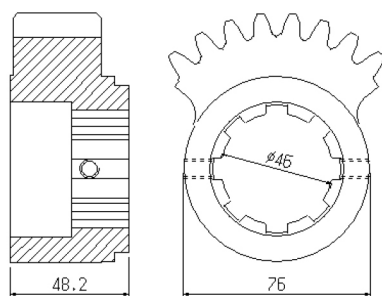


G5/039R
rullo / roller

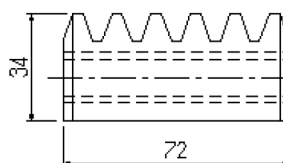
G5/039P
perno / pin



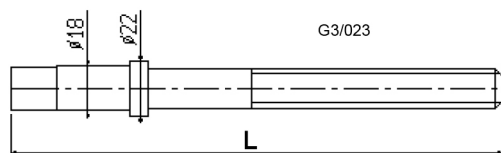
G5/039
303-08-1380/001



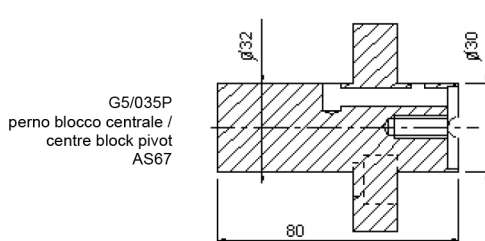
G5/020
settole dentato / sector gear



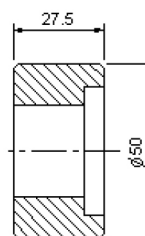
G3/022
Cremagliera
linear gear
303-25-129



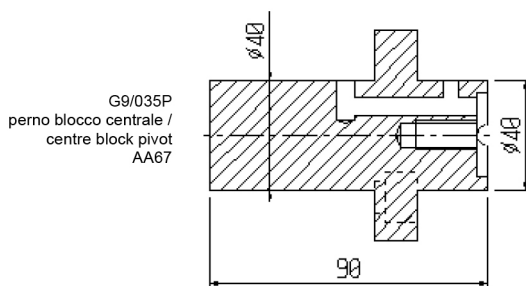
G3/023



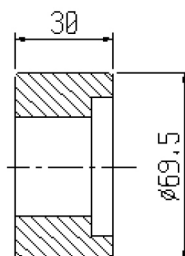
G5/035P
perno blocco centrale /
centre block pivot
AS67



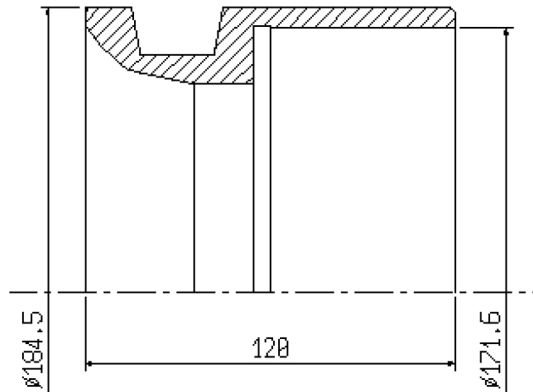
G5/035R
rullo / roller
AS67



G9/035P
perno blocco centrale /
centre block pivot
AA67

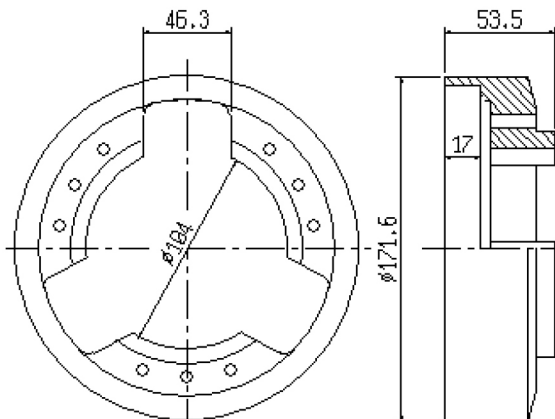
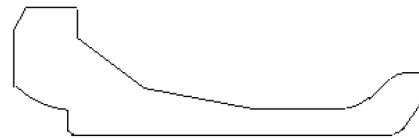


G9/035R
rullo / roller
AA67

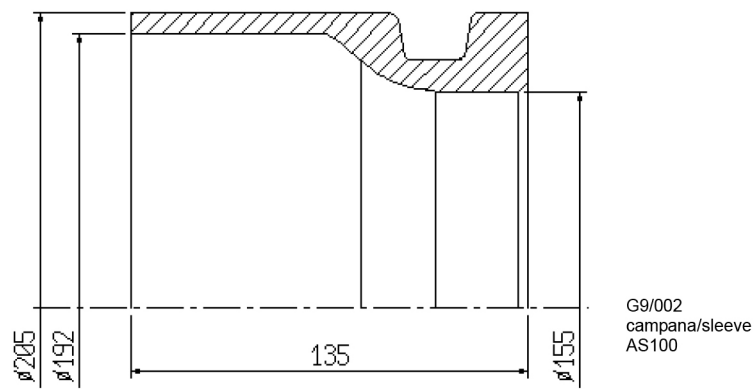


G9/001
campana/sleeve
AS82

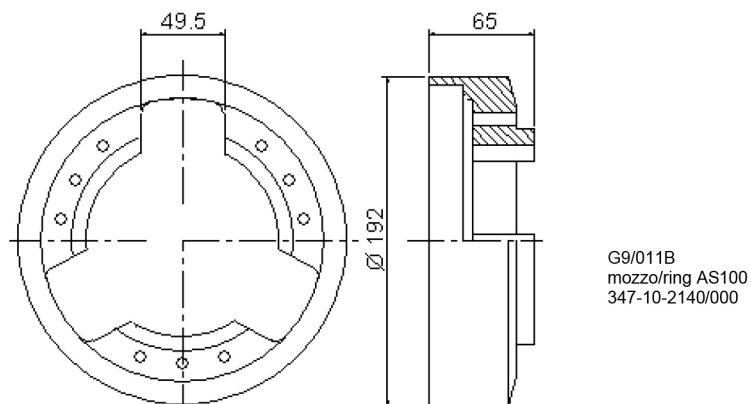
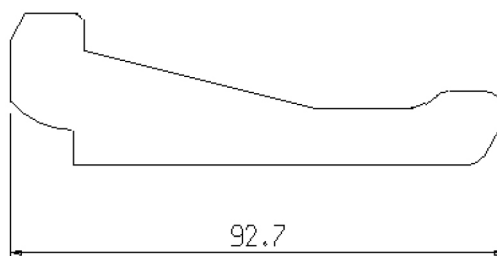
G9/003
martelletto/toggle AS82
327-10-2130/002



G9/011
mozzo/ring AS82

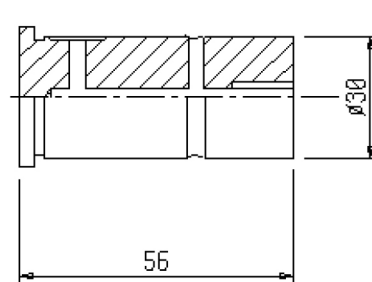


G9/004
martelletto/toggle AS100
347-10-2130/000

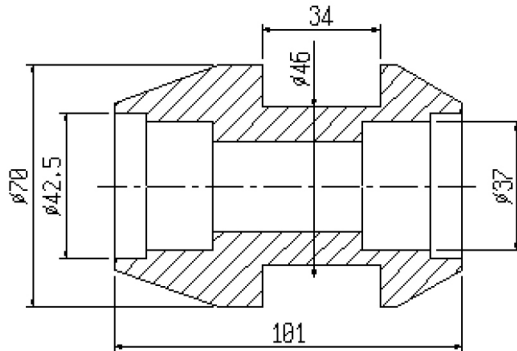
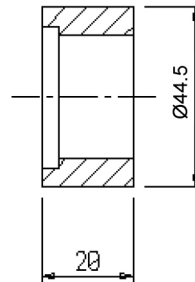




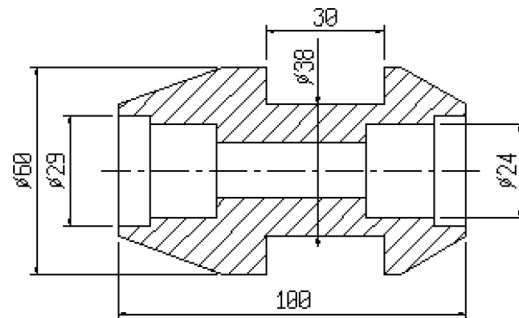
G9/030P
perno / pin
305-08-1410



G9/030R
rullo / roller
305-08-1420

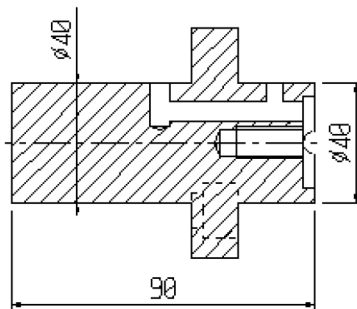


G9/050A
rullo / roller

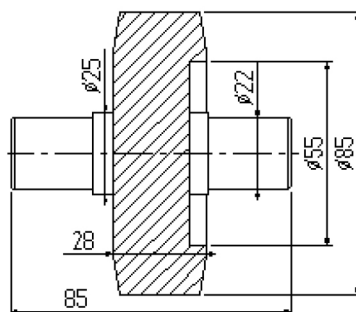
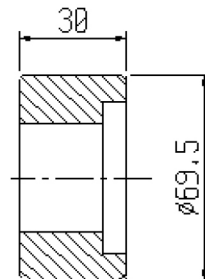


G9/050B
rullo / roller

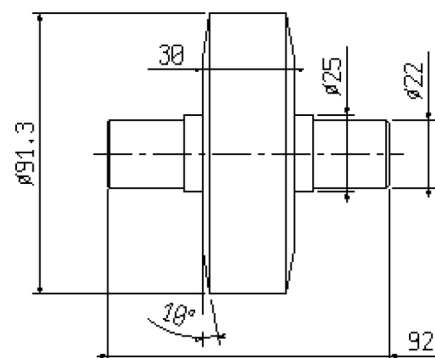
G9/035P
perno blocco centrale /
centre block pivot



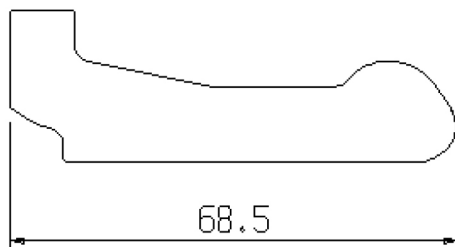
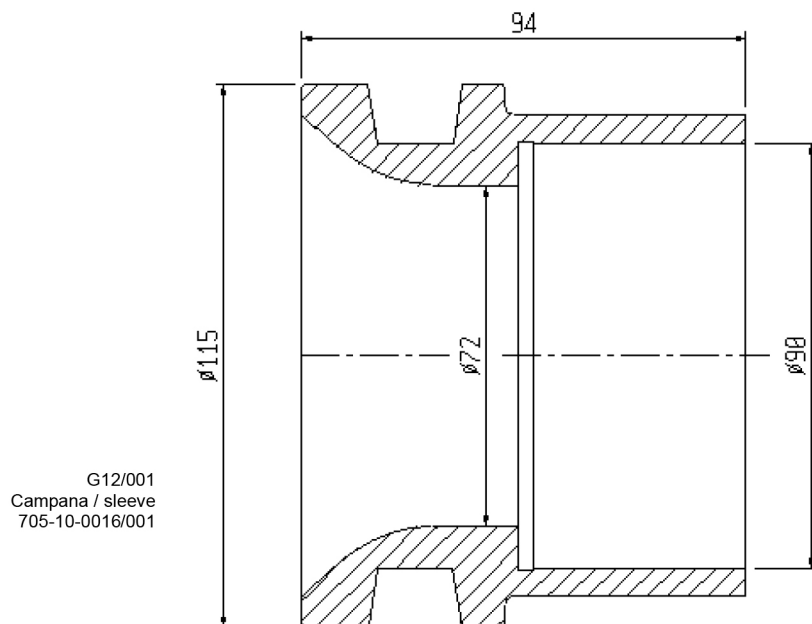
G9/035R
rullo / roller

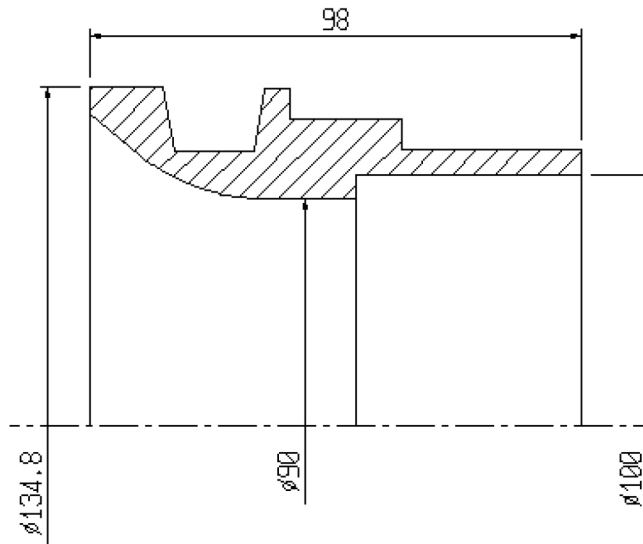


G5/040
rullo / roller



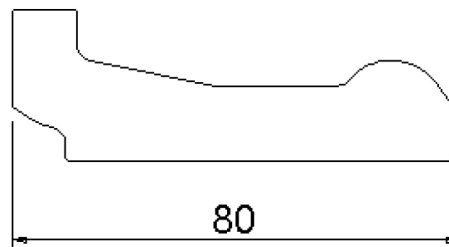
G5/040B
rullo / roller





G14/001
Campana / sleeve
703-10-0016/001

G14/003
martelletto / toggle
703-10-0017/000



Maintaining your equipment to its optimum performance is important to your business.

Turning Concepts has the knowledge and expertise to help you on your next project. Call one of our experts today and see the difference working with Turning Concepts can make for your business.

Turning Concepts
701 Matthews Mint-Hill Road
Matthews, NC 28104

Phone (704) 849-9209

***TURNING
CONCEPTS***
Solutions to the Metal Working Industry

