

# **TURNING CONCEPTS**

*Solutions to the Metal Working Industry*



Attachments and Spare Parts for Multi-Spindle  
Automatic Screw Machines

machine

## **Schutte**

for models    SD32   SE16   SF13   AF26  
                  AD40   SE25   SF20   AF32  
                  SD50

catalog #

## **Schutte**

SF26  
SF26L  
SF32  
SF40  
SF42  
SF67

# **Attachments Catalog 2018-2019**

Call us today **(704) 849-9209**  
or visit us online @ **turningconcepts.com**



# TABLE OF CONTENTS

Threading Attachment .....	page 3
Threading Spindles .....	page 4
Polygon and Thread Milling Attachments .....	page 5
Polygon Attachment w/ Longitudinal Stroke .....	page 6
High Speed Drilling Attachment .....	page 7
Broaching Attachment .....	page 8
Ramp Recessing Attachment .....	page 9
Slotting Attachment .....	page 10
Longitudinal Turning Chariot .....	page 10
Backside Grooving Attachment .....	page 11
Marking Attachment .....	page 12

## THREADING ATTACHMENT for

SD32    SE16    SF13    AF26  
AD40    SE25    SF20    AF32  
SD63            SF26  
                  SF26L  
                  SF32  
                  SF40

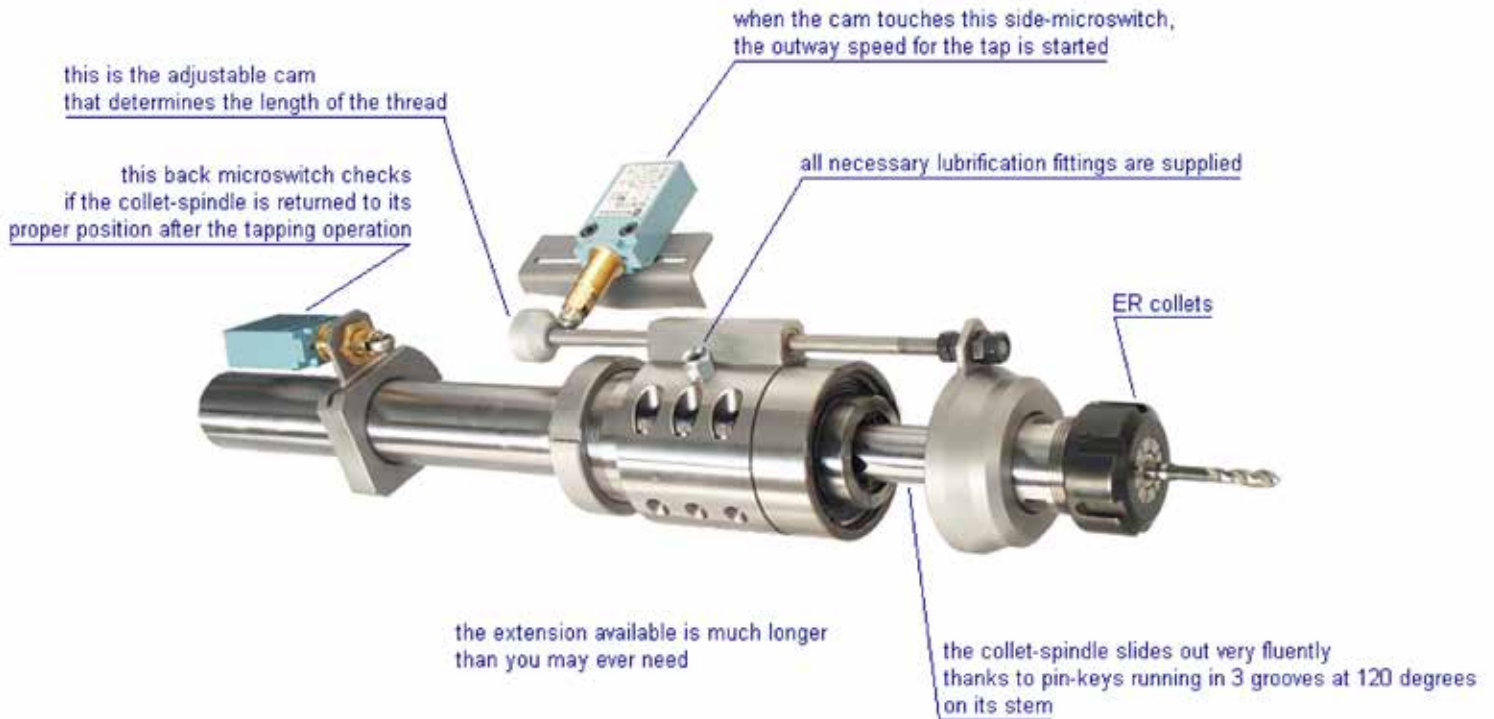
We can supply the entire attachment. That means all the sequence of shafts, gears, electromagnetic clutches, bearings and everything else is needed to start the threading operation. All gears and shafts are hardened and grinded as Schutte's quality needs. The mechanical parts are supplied already fitted together when it is possible.



The electromagnetic clutches are piloted by our Power Unit, that is also able to stop the machine in case of malfunction during the threading operation.

Our new concept threading spindles do not require any tap-holder, in fact its frontal part (collet spindle) can slide out the support and follow the tapping operation. That is why we can check the length of the thread directly on the extraction of the collet- spindle. SEE NEXT PAGE...

## THREADING SPINDLES

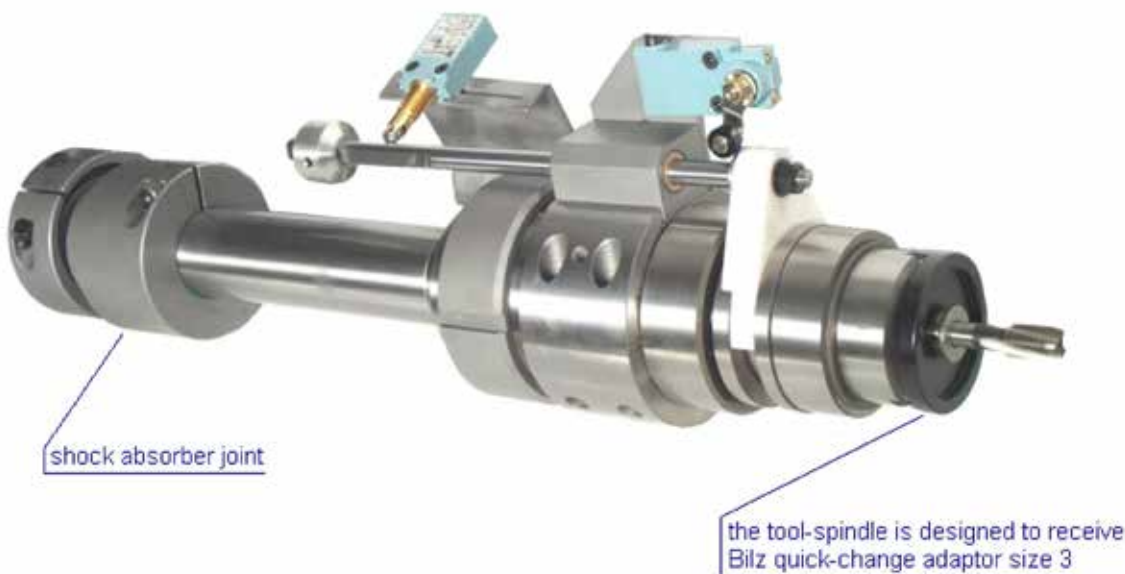


There are 3 different sizes for our threading spindles:

**SIZE1**  
with ER25 collet  
Suitable for  
SE16  
SF13, SF20, SF26L

**SIZE2**  
with ER32 collet  
suitable for  
SD32, AD40  
SE25  
SF26, SF32, AF26, AF32

**SIZE3**  
with Bilz quick-change adapter  
suitable for  
SD32, SD40, SD50, SD63  
SF40, SF42, SF51, SF67



SIZE3 threading spindle

## POLYGON AND THREAD MILLING ATTACHMENT for

SD32	SE16	SF13	AF26
AD40	SE25	SF20	AF32
SD50		SF26	
SD63		SF26L	
		SF32	
		SF40	
		SF42	
		SF67	



Schutte SF 13 SF20

We can also supply cutter tools for polygon generating operations. As you can see in this picture, they have the possibility to hold 1 cutter or 2 cutters at 180° or 3 cutters at 120°. We can supply different sizes of cutters that need to be grinded by the customer.

Schutte SE 16 SE25



## POLYGON ATTACHMENT WITH LONGITUDINAL STROKE



This attachment can make wide polygon-generating operations without being mounted on the optional compound slide of the machine. The tool arbor of the cross slide gear-box is extractable and its back side is outside the gear-box, so it can be pushed forward by a bracket fixed on the tool-spindle in the same station. A set of belleville washers will pull the arbor to its starting position at the end of the cycle.



## HIGH SPEED DRILLING ATTACHMENT for

SD32	SE16	SF13	AF26
AD40	SE25	SF20	AF32
SD50		SF26	
SD63		SF26L	
		SF32	
		SF40	
		SF42	
		SF67	

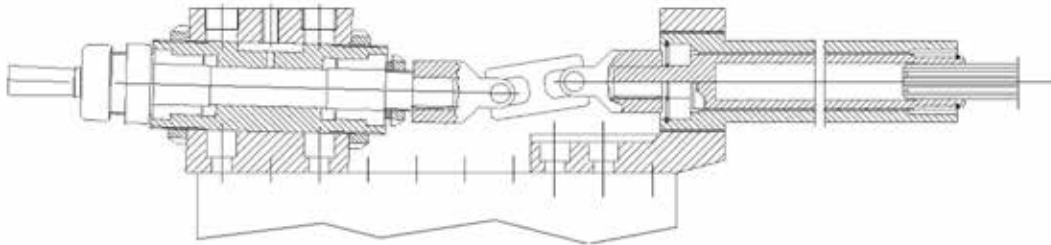


The High Speed Drilling Attachment is usually supplied with ER type collets and with different couples of ratio gears. It is now available in the coolant fed version: the coolant liquid can be pushed through the tool at high pressure during the drilling operation.



## BROACHING ATTACHMENT

SD32	SE16	SF13	AF26
AD40	SE25	SF20	AF32
SD50		SF26	
SD63		SF26L	
		SF32	
		SF40	
		SF42	
		SF67	





## RAMP RECESSING ATTACHMENT

SD32	SE16	SF13	AF26
AD40	SE25	SF20	AF32
SD50		SF26	
SD63		SF26L	
		SF32	
		SF40	
		SF42	
		SF67	



### TECHNICAL DATA:

- 14° degree ramp
- Tool Fitting = 25 mm diameter bore (eccentric)
- Possibility of lubrication liquid through the tool
- Up and down adjustable toolholder
- Possibility of axial movement while recessing

This attachment is used to create recesses inside the component. It has to be located on the central block of the machine. After reached the right position inside the component the tool- holder moves upwards, sliding on a 14° degree ramp (that means 1 mm upwards every 4 mm of axial movement of the central block).

The length of the recess is usually the same as the length of the cutting tool. However, if you need to create longer recesses, our attachment can also move axially while making the recess.

## SLOTING ATTACHMENT

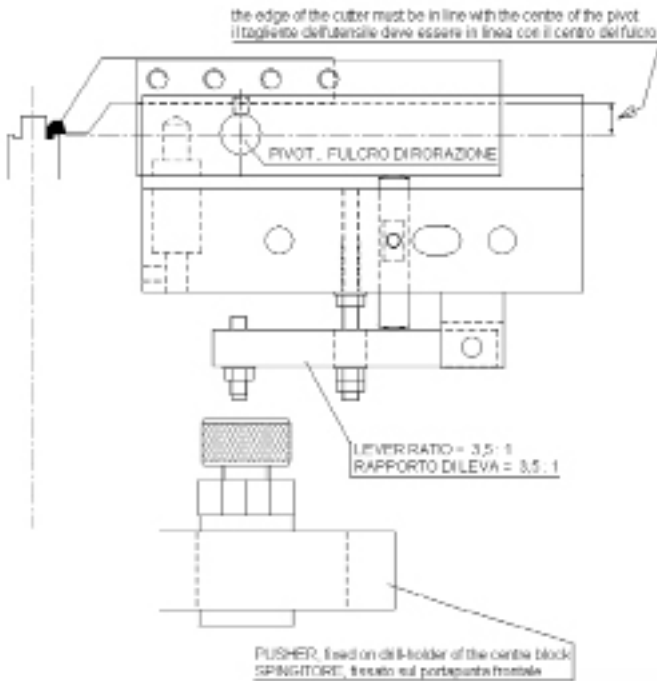


This attachment is designed to create radial slots on the external surface of the component. The tool rotates at the same speed as the component with opposite direction.

## LONGITUDINAL TURNING CHARIOT



## BACK SIDE GROOVING ATTACHMENT



It is fixed on cross slide and it makes back or frontal grooving operations. The tool is not included and must be properly profiled by the customer.

The cutter moves on a circle but, because of its distance to the pivot and its small movement inside the part, the result is like it does a straight movement.

The tool-holder is pushed by a bracket fixed on the center block.



## MARKING ATTACHMENT

SD32	SE16	SF13	AF26
AD40	SE25	SF20	AF32
SD50		SF26	
SD63		SF26L	
		SF32	
		SF40	
		SF42	
		SF67	



- This attachment is used for marking the components in a very simple and quick way, because it is based on a completely mechanical logic.
- The cross slide, with our attachment on, moves forward till the engraved disk touches the component.
- Because of the friction between them, the disk starts to turn and mark the component.
- When the engraving is over, the disk stops in a fixed position to avoid further contact with the component.
- During the return stroke a paper pin fixed on the wall of the machine resets the attachment with the disk able to turn again.
- We can supply blank disks only together with the instructions about how to engrave them.

Maintaining your equipment to its optimum performance is important to your business.

**Turning Concepts** has the knowledge and expertise to help you on your next project. Call one of our experts today and see the difference working with Turning Concepts can make for your business.

**Turning Concepts**  
701 Matthews Mint-Hill Road  
Matthews, NC 28104

**Phone (704) 849-9209**

***TURNING  
CONCEPTS***  
*Solutions to the Metal Working Industry*

